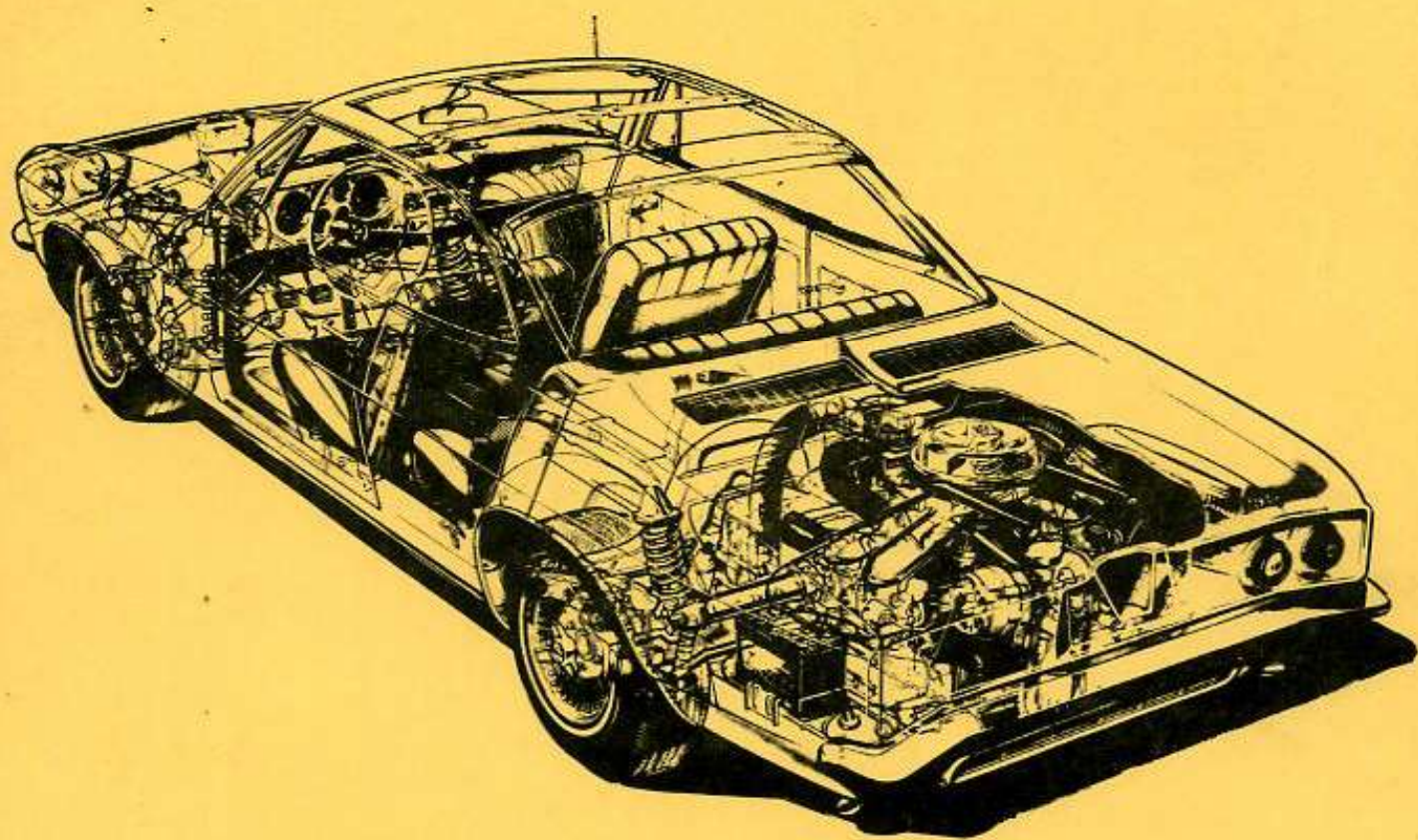


ASSEMBLY MANUAL



**1965
CORVAIR**

C7315



CHEVROLET

ASSEMBLY INSTRUCTIONS

3862100

CORVAIR 10000 SERIES

SHEET

TITLE

SHEET

TITLE

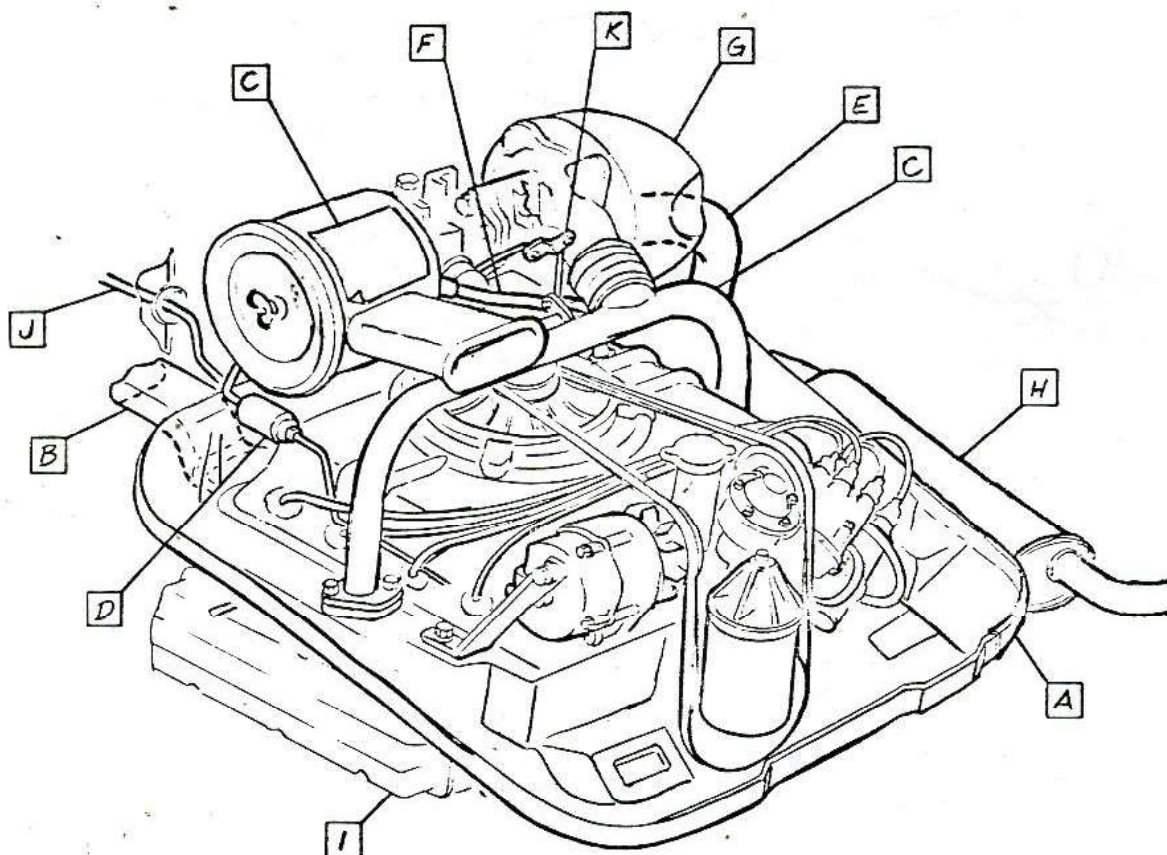
1. CONTENTS-TURBO-CHARGER
- A** 2. ENGINE SHIELDS & SHROUD
- B** 3. HEATER & DEFROSTER HOSES
- C** 4. DECALCOMANIA, INDUCTION PIPE, CARBURETOR & A/CL
- D** 5. FUEL FILTER, FUEL & CHOKE PIPES
- E** 6. TURBO CHARGER INLET & OUT-LET PIPES
- F** 7. CLOSED ENGINE POSITIVE VENTILATION & OIL OUTLET PIPE

- G** 8. HEAT SHIELD
- H** 9. EXHAUST SYSTEM
- J** 10. FUEL & FUEL RETURN LINES
11. VACUUM GAGE HOSE, FUEL & FUEL RETURN LINES ①
- K** 12. CARBURETOR CROSS SHAFT LINKAGE
- L** 13. TEMPERATURE WARNING BUZZER ③

④ THE FOLLOWING PARTS ARE INSTALLED THE SAME AS REGULAR PRODUCTION 10700. ②

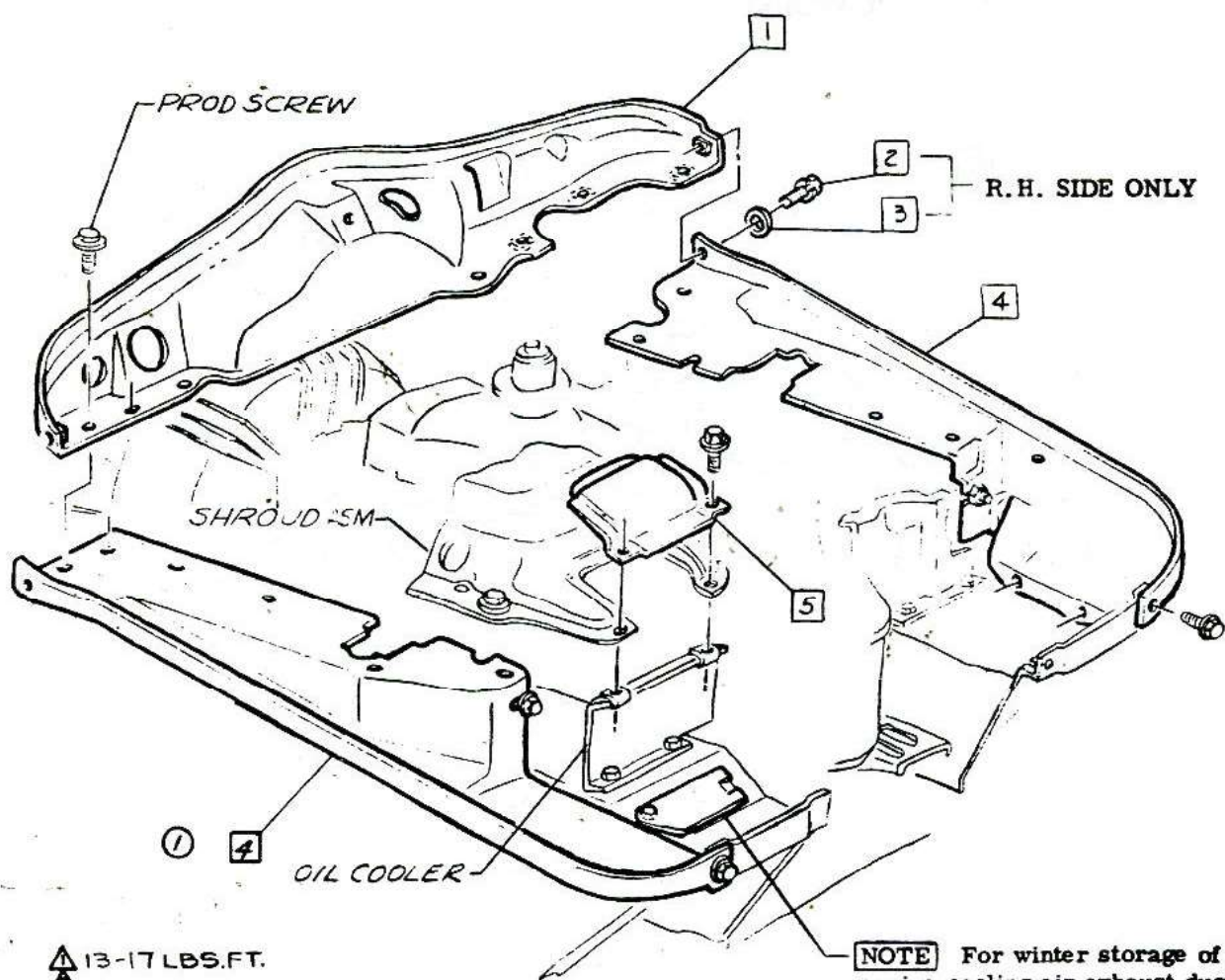
3854338 PLATE-NAME

④ **1** 3873875 ENGINE ASM (AS SHIPPED) ⑤



• CHEVROLET MOTOR DIVISION, GMC •				UPC	DATE	SYM	REVISION RECORD	AUTH	DR	CK
TURBO-CHARGER-CONTENTS				L87	7-22-64	1	TITLE REVISED	63527	6/1	
					10-16-64	2	NON-ILLUS. PARTS ADDED	64722		H/C
10700				1.	10-16-64	3	SHEET 13 ADDED	64722	6/1	CF
					11-3-64	4	WAS 3851861 ENGINE	65236	6/1	CF
DWG PREL. 5-14 GW REF: Prel. 10 L-60024 L- DATE REL. 5-14 L- L- L-				<input checked="" type="checkbox"/> SHEET	12-14-64	5	WAS 3873907 ENGINE	65521	6/1	CI

- 1 3851980 SHIELD ASM-ENG FRT
- 2 9409107 SCREW
- 3 120392 P. WASHER
- 4 3851982 SHIELD ASM-ENG SIDE R. H.
- 5 3851889 L. H.
- 6 3848396 COVER-OIL COOLER ACCESS



NOTE For winter storage of engine cooling air exhaust duct cover - See U. P. C. 6

* CHEVROLET MOTOR DIVISION, GMC *				UPC	DATE	SYM	REVISION RECORD	AUTH	DR	CK
TURBO-CHARGER-ENGINE SHIELDS & SHROUD				L87	9-22-64	1	UPC 6 REF REMOVED	66467	JB	
						2	3851889 LH ADDED			DF
10700				2.						
DWG PREL 5-15 JB REF: Prel. 11 L-73036 L-										
DATE REL 5-15 L- L- L-				X SHEET						



CHEVROLET

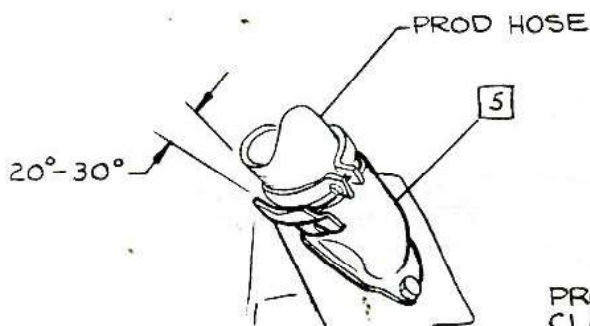
ASSEMBLY INSTRUCTIONS

3862100

CORVAIR 10000 SERIES

- ① 1 3851894 SHROUD ASM
① ② 2 3869520 CLAMP-Position ends of clamp
③ 3 3/8 to 1/2 inches away from
sheet metal to avoid conditions
which might cause vibration.
② 3
4 3863667 HOSE
5 3817560 CONNECTOR ASM-R. H.

- 6 3817562 SEAL-R. H.
7 9417227 RIVET
8 3851897 CONNECTOR



NOTE Flatten heat shield to provide installed clearance for turbo inlet pipe clamp. After pipe clamp is installed, bend heat shield open as shown

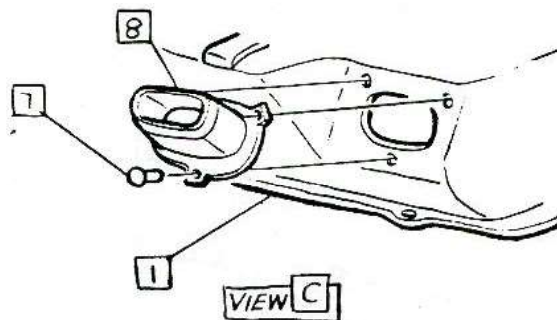
VIEW A

PROD GROMMET

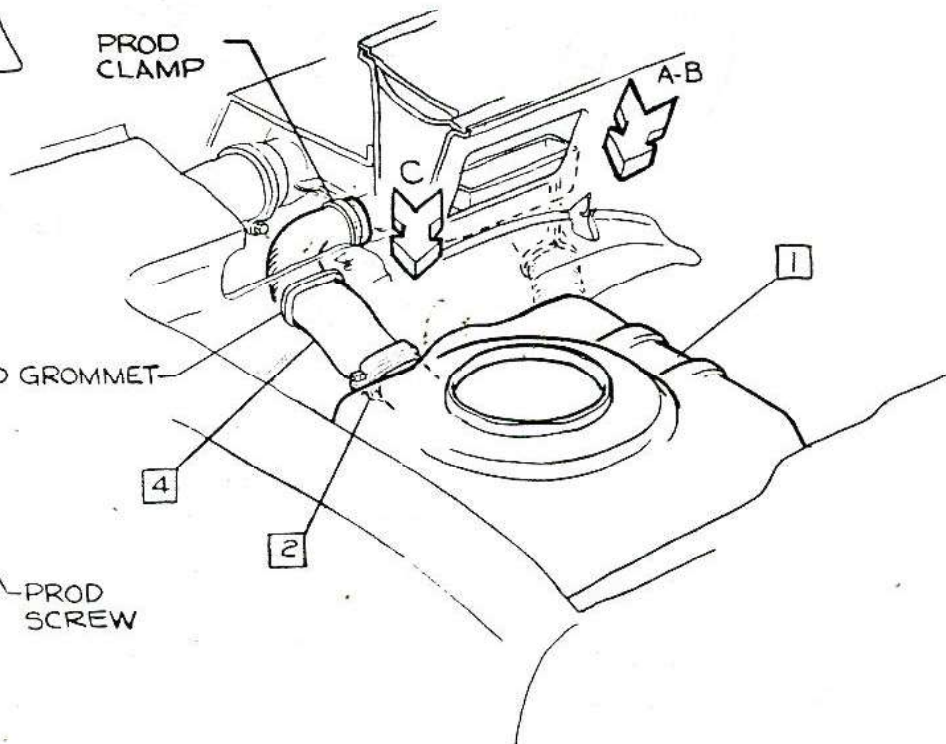
PROD SCREW

- ▲ 16-22 LBS IN.
▲ 22-30 LBS IN.
▲

VIEW B



VIEW C

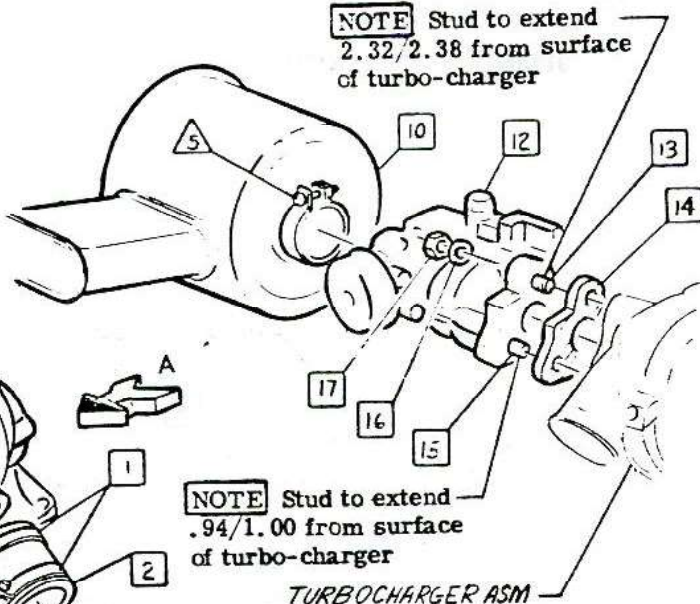


• CHEVROLET MOTOR DIVISION, GMC •				UPC	DATE	SYM	REVISION RECORD	AUTH	DR	CK
TURBO-CHARGER-HEATER & DE FROSTER HOSES				L87	7-31-64	1	WAS 3863678 CLAMP	2-6-17	FC	
						2	9422524 SCREW (16-22-35 IN REMOVED			
						3	TORQUE (2) ADDED			DF
10700				3.						
DWG PREL 5-15 JB REF: Prel. 12 L-72621 L-72397										
DATE REL 5-15 L-73036 L-										
				SHEET	X					

- ① 1 3824836 CLAMP
- 2 3794415 HOSE
- 3 3824170 PIPE ASM-INDUCTION
- ② 4 3775150 BOLT-INNER
- 5 187119 L. WASHER
- 6 3817242 GASKET
- ② 7 122017 BOLT-OUTER
- ③ 8 9417881 SCREW
- 9 3817401 BRACKET
- 10 6420244 AIR CLEANER ASM
- ① 11 3867239 DECALCOMANIA
- ④ ③ 12 3660766 CARBURETOR ASM ⑨
- 13 3829481 STUD

- 14 3817247 GASKET
- 15 3817508 STUD
- ⑥ 16 2454766 P. WASHER
- ④ 17 120369 NUT
- 18 3786313 REINFORCEMENT

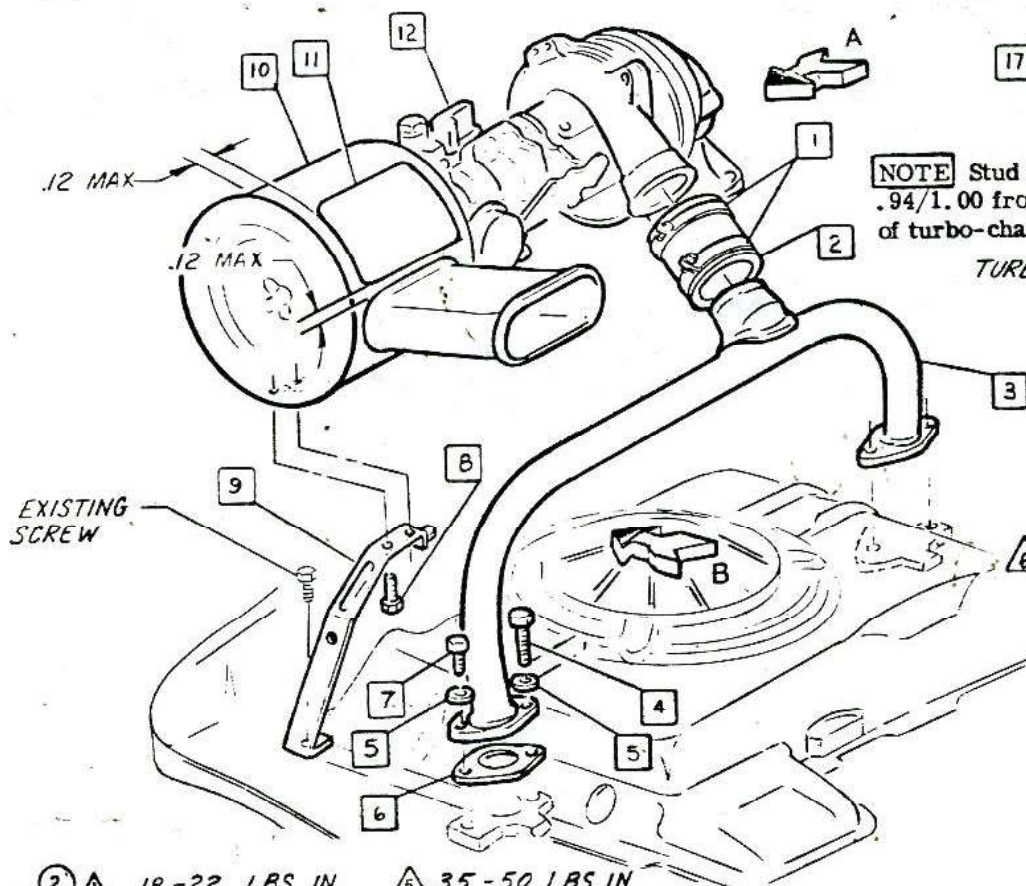
NOTE Stud to extend
2.32/2.38 from surface
of turbo-charger



NOTE Stud to extend
.94/1.00 from surface
of turbo-charger

TURBOCHARGER ASM

VIEW A



EXISTING
SCREW

⑥ EXISTING
SCREW

VIEW B

- ② ① 18-22 LBS IN
- ⑤ ② 8-12 LBS FT
- ⑦ ③ 61-76 LBS IN
- ⑦ ④ 16-22 LBS FT
- ③ 35-50 LBS IN
- ④ 70-95 LBS IN

• CHEVROLET MOTOR DIVISION, GMC •				UPC	DATE	SYM	REVISION RECORD	AUTH.	DR	CK
TITLE 										



F H E M 2 0 1 0 1

ASSEMBLY INSTRUCTIONS

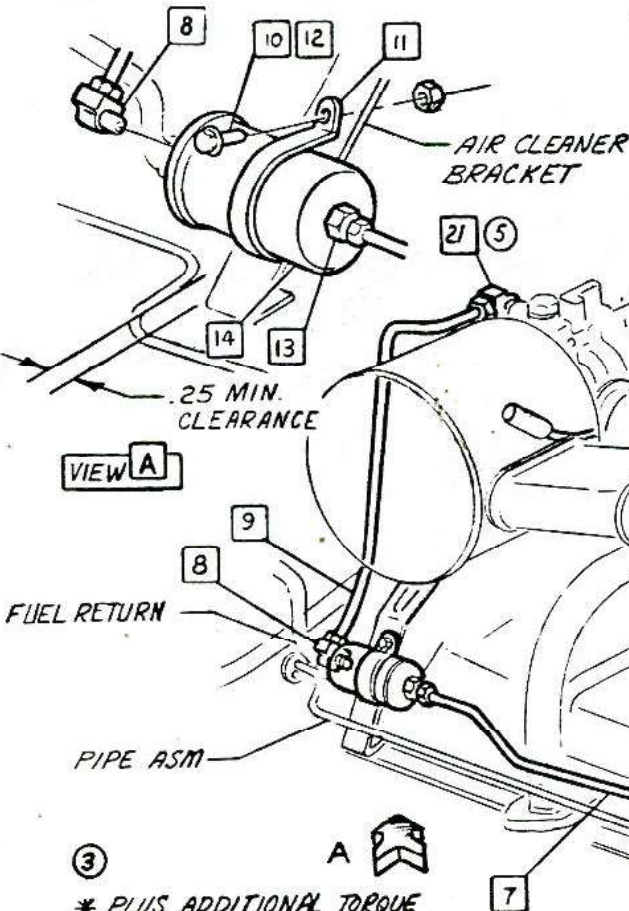
3862100

CORVAIR 10000 SERIES

- ① 1 3851846 PIPE ASM-OIL INLET
- ② 2 3818743 CONNECTOR
- ③ 3 3783008 CLAMP
- ④ 4 3818742 HOSE-SPARK
- ⑤ 5 143347 ELBOW
- ⑥ 6 3710497 CLIP
- ⑦ 7 3828678 PIPE ASM-FUEL
- ⑧ 8 137422 ELBOW
- ⑨ 9 3867217 PIPE ASM-FUEL
- ⑩ 10 121900 BOLT

- ⑪ 11 3840323 STRAP
- ⑫ 12 134551 NUT
- ⑬ 13 142555 CONNECTOR
- ⑭ 14 5650818 FILTER ASM
- ⑮ 15 111345 CONNECTOR
- ⑯ 16 3829478 PIPE ASM-CHOKE
- ⑰ 17 3666901 CLIP
- ⑱ 18 3829477 PIPE-AIR INLET
- ⑲ 19 3817828 HOSE
- ⑳ 20 3828680 TEE
- ㉑ 21 142558 ELBOW

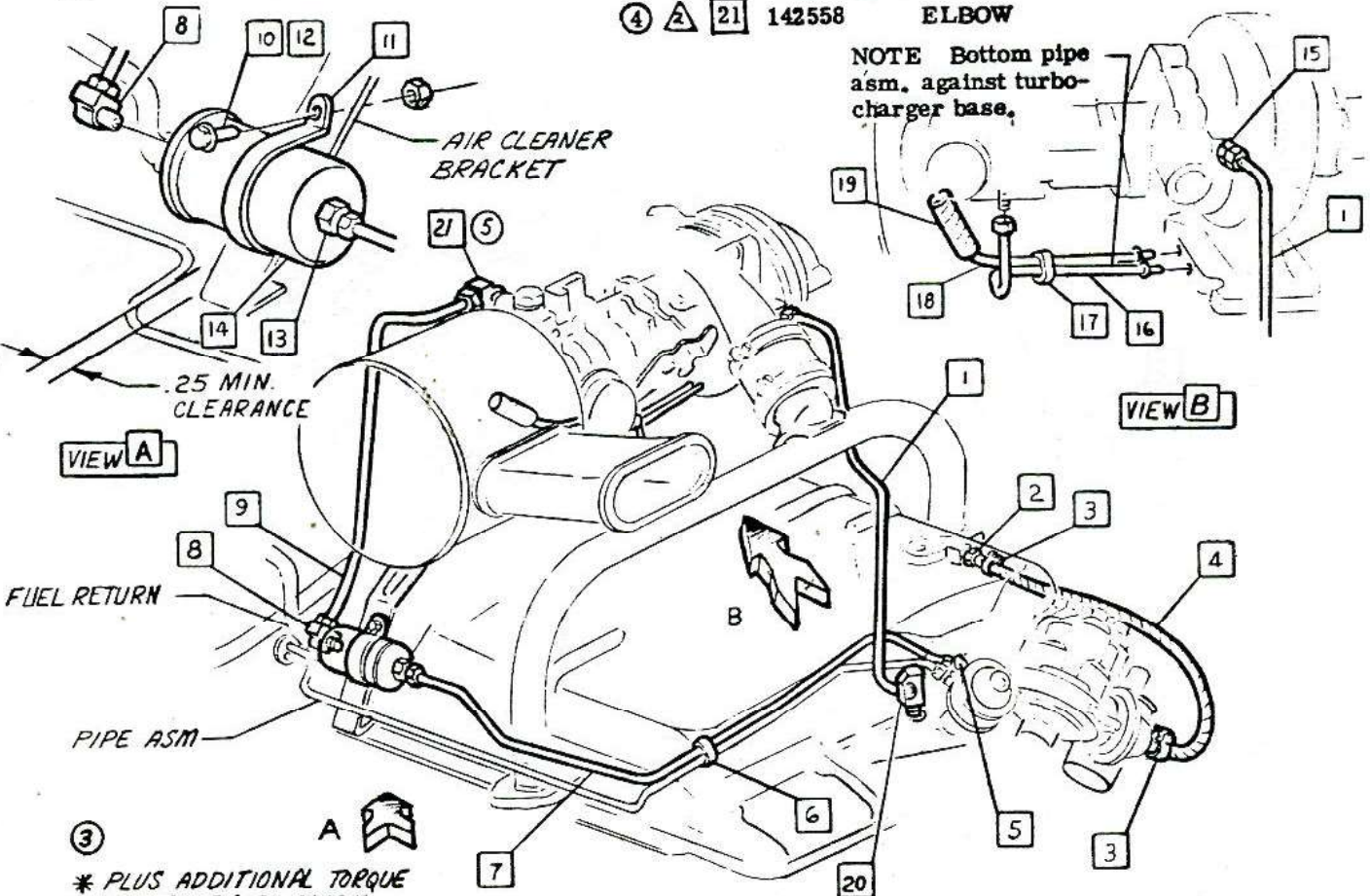
- ② ① ⑦
- ④ ② ⑪



③ * PLUS ADDITIONAL TORQUE NECESSARY TO ALIGN TEE

- ① 85 - 105 LBS IN
- ② 100 - 125 LBS IN
- ③ 7 - 11 LBS IN
- ④ 115 - 135 LBS IN

- ⑤ 45 - 60 LBS IN
- ⑥ 75 - 175 LBS IN
- ⑦ 40 - 60 LBS IN *



• CHEVROLET MOTOR DIVISION, GMC •				UPC	DATE	SYM	REVISION RECORD	AUTH.	DR	CK
TURBO-CHARGER-FUEL FILTER, FUEL & CHOKE PIPES				L87	6-18-66	1	121711 CONNECTOR (100-125 LBS IN.)	64855	KS	
							REMOVED			DF
					10-5-64	2	ITEM (20) & TORQUE ADDED	66454	RS	
						3	TORQUE NOTE ADDED			DF
					3-4-65	4	ITEM 21 & TORQUE SYM ADDED	68894	KN	
10700				5.		5	SYM 21 HAS SYM 0			CI
DWG PREL 5-5 RS REF: Prel. 2 L-65936 L- DATE REL 5-15 L- L- L-					SHEET <input checked="" type="checkbox"/>					

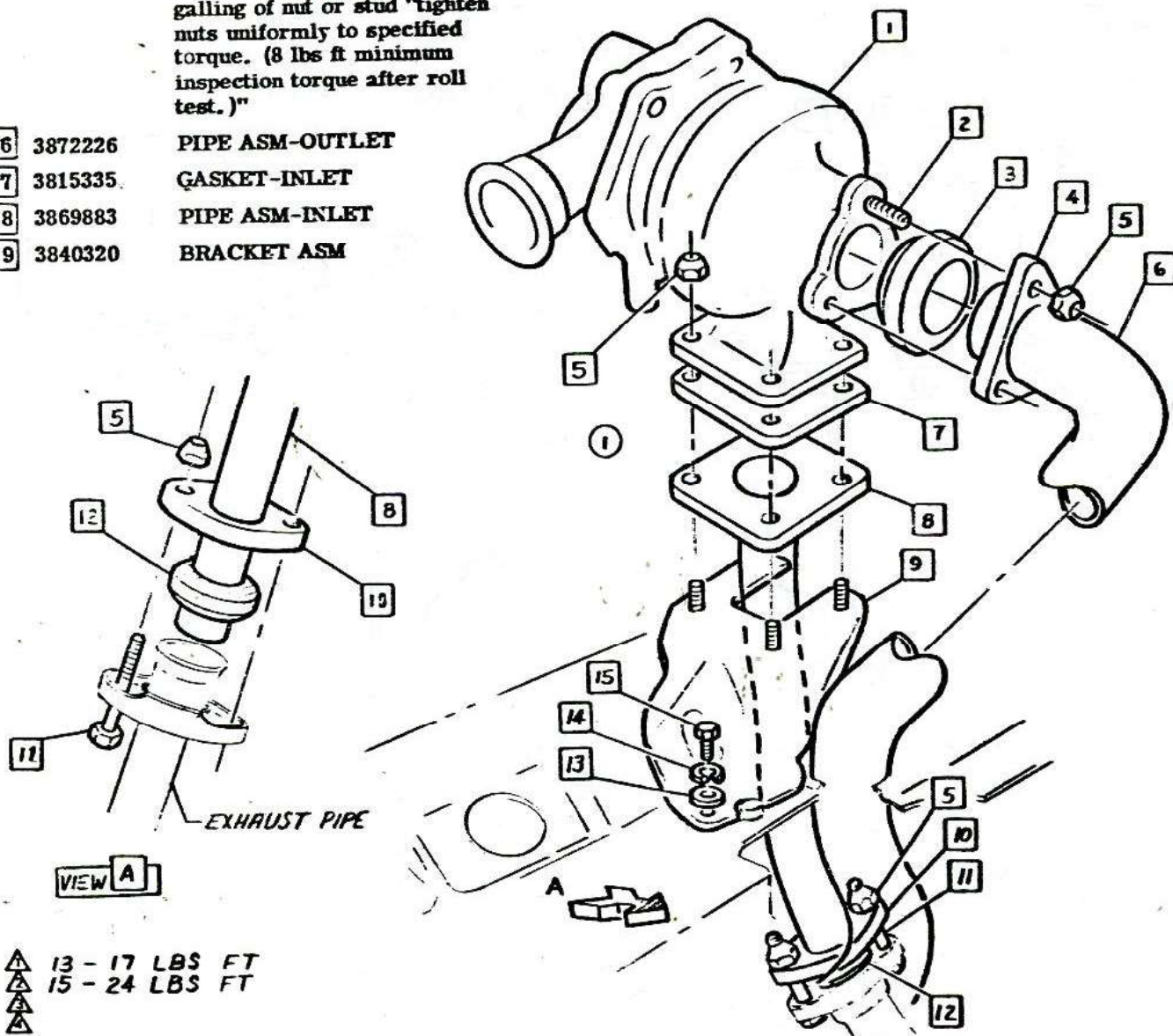
1965-214

3862100

CORVAIR 10000 SERIES

- 1 3856709 TURBOCHARGER ASM
- 2 3829473 STUD-Extend stud to 1.45/
1.51 from surface of turbo-
charger.
- 3 3767556 PACKING
- 4 3850231 FLANGE
- ① 5 3829086 NUT-Do not drive into
position at over 250 R. P. M.
(free) to prevent excessive
heat build-up and consequent
galling of nut or stud "tighten
nuts uniformly to specified
torque. (8 lbs ft minimum
inspection torque after roll
test.)"
- ④ ② 6 3872226 PIPE ASM-OUTLET
- 7 3815335 GASKET-INLET
- ③ 8 3869883 PIPE ASM-INLET
- 9 3840320 BRACKET ASM

- 10 3858447 PLATE
- 11 9420687 BOLT
- 12 593606 PACKING
- 13 3693853 P. WASHER
- 14 103321 L. WASHER
- ② 15 122138 BOLT



• CHEVROLET MOTOR DIVISION, GMC •				UPC	DATE	SYN	REVISION RECORD	AUTH	DR	CK
TURBO-CHARGER-TURBOCHARGER, INLET & OUTLET PIPES				L87	7-23-64	1	STUD NOTE & ITEM (13, RAIND	64728	RS	
						2	WAS 385444 PIPE	65166		
						3	WAS 3858445 PIPE			WAS
					9-16-64	4	WAS 3867552 PIPE	65749	RS	LF
10700				6.						
DWG PREL 5-5 RS REF: Prel. 3 L-73336 L-										
DATE REL 5-8 L- L- L-					X SHEET 1					

+



CHEVROLET

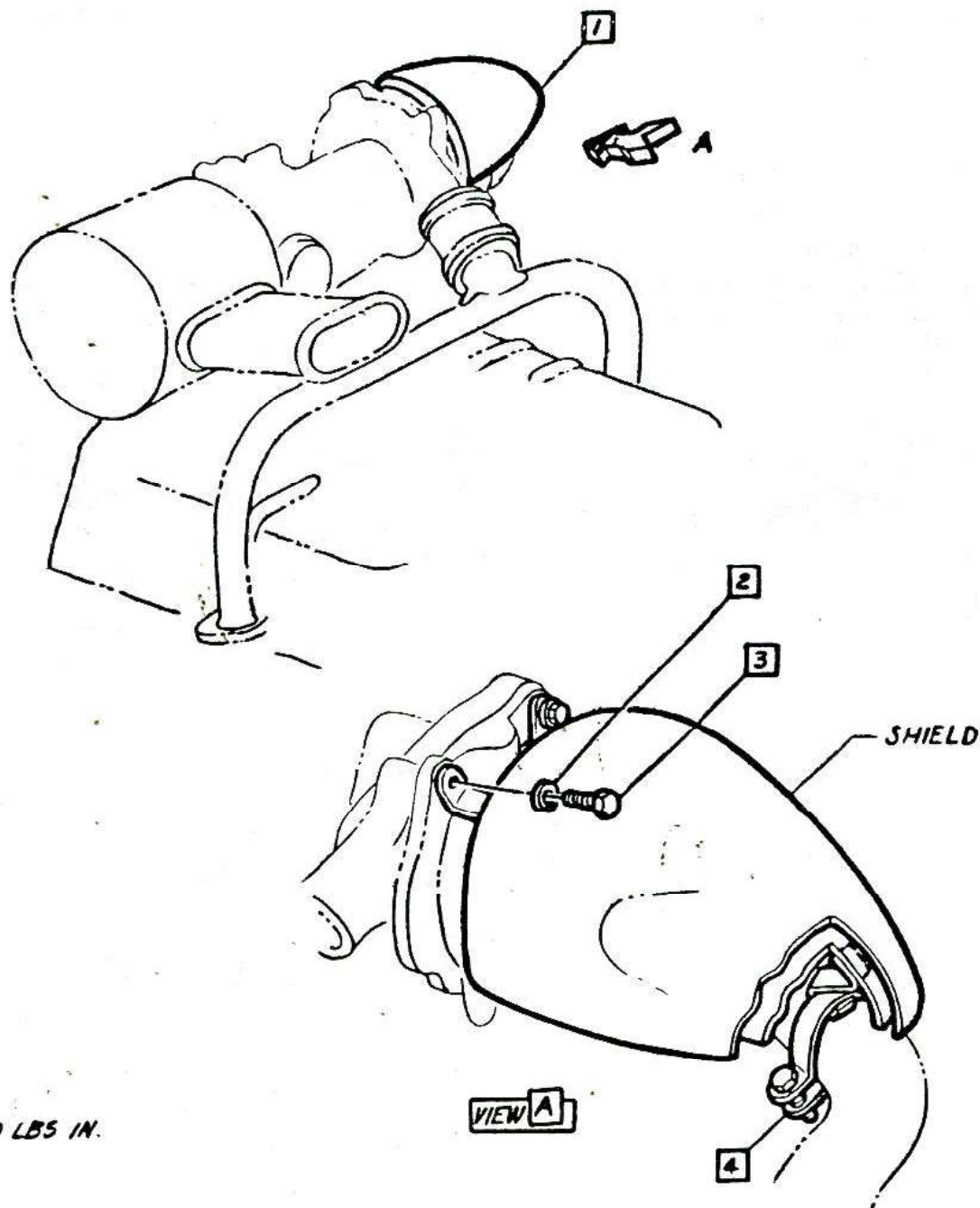
ASSEMBLY INSTRUCTIONS

3862100

CORVAIR 10000 SERIES

- 1 3851995 SHIELD
 ① 2 103319 L. WASHER

- ⚠ 3 9417815 BOLT
 4 9421053 CLAMP



⚠ 20-30 LBS IN.
 ⚠
 ⚠
 ⚠

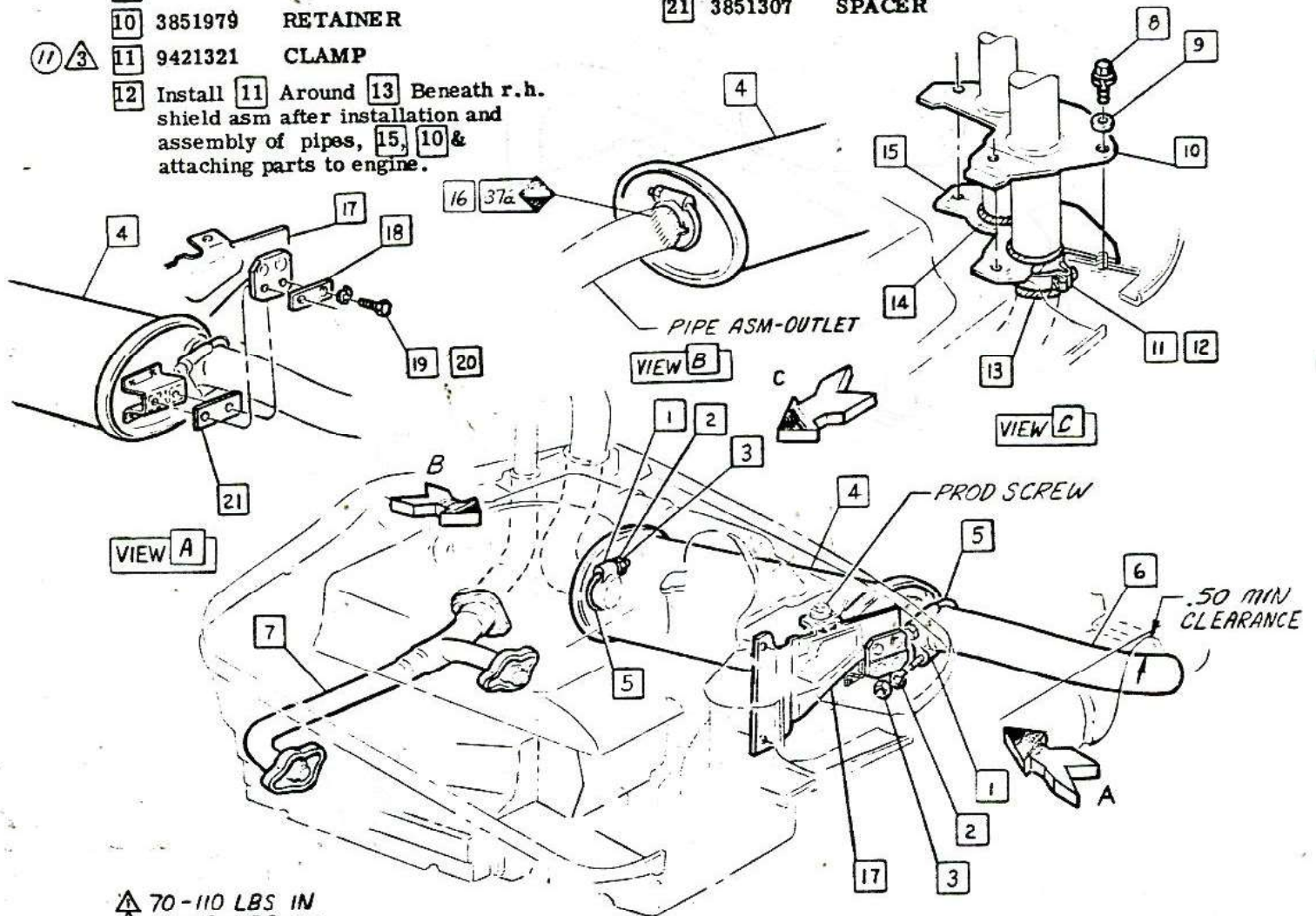
VIEW A

CHEVROLET MOTOR DIVISION, GMC				UPC	DATE	SYM	REVISION RECORD		AUTH.	DR	CK
TUBRO-CHARGER-HEAT SHIELD				L87	10-6-64	1	WAS 120380 WASHER		62884	RS	
10700				8.							
DWG PREL 5-5	RS	REF: Prel. 6	L-72649	L-							
DATE REL 5-8		L-	L-	L-							
X SHEET											

1965-216

- ⑧ 1 2395898 CLAMP
- 2 103320 L. WASHER
- ① 3 102634 NUT
- 4 3869877 MUFFLER ASM
3869878 -OPT
- 5 2395897 "U" BOLT
- 6 3869879 PIPE-TAIL
- 7 3868440 EXHAUST PIPE ASM
- ⑨ ② 8 3856672 SCREW ASM
- 9 120392 P. WASHER
- 10 3851979 RETAINER
- ⑪ ③ 11 9421321 CLAMP
- 12 Install 11 Around 13 Beneath r.h. shield asm after installation and assembly of pipes, 15, 10 & attaching parts to engine.

- 13 3827240 SEAL
- 14 3827241 SEAL
- 15 3851978 PLATE
- 16 9985020 SEALING COMPOUND Approx .02 oz per job apply to full I. D. of connector prior to assembly of exhaust pipe.
- ⑩ ④ 17 3873602 BRACKET ASM
- 18 3851306 RETAINER
- 19 103320 L. WASHER
- ④ 20 122017 BOLT
- 21 3851307 SPACER

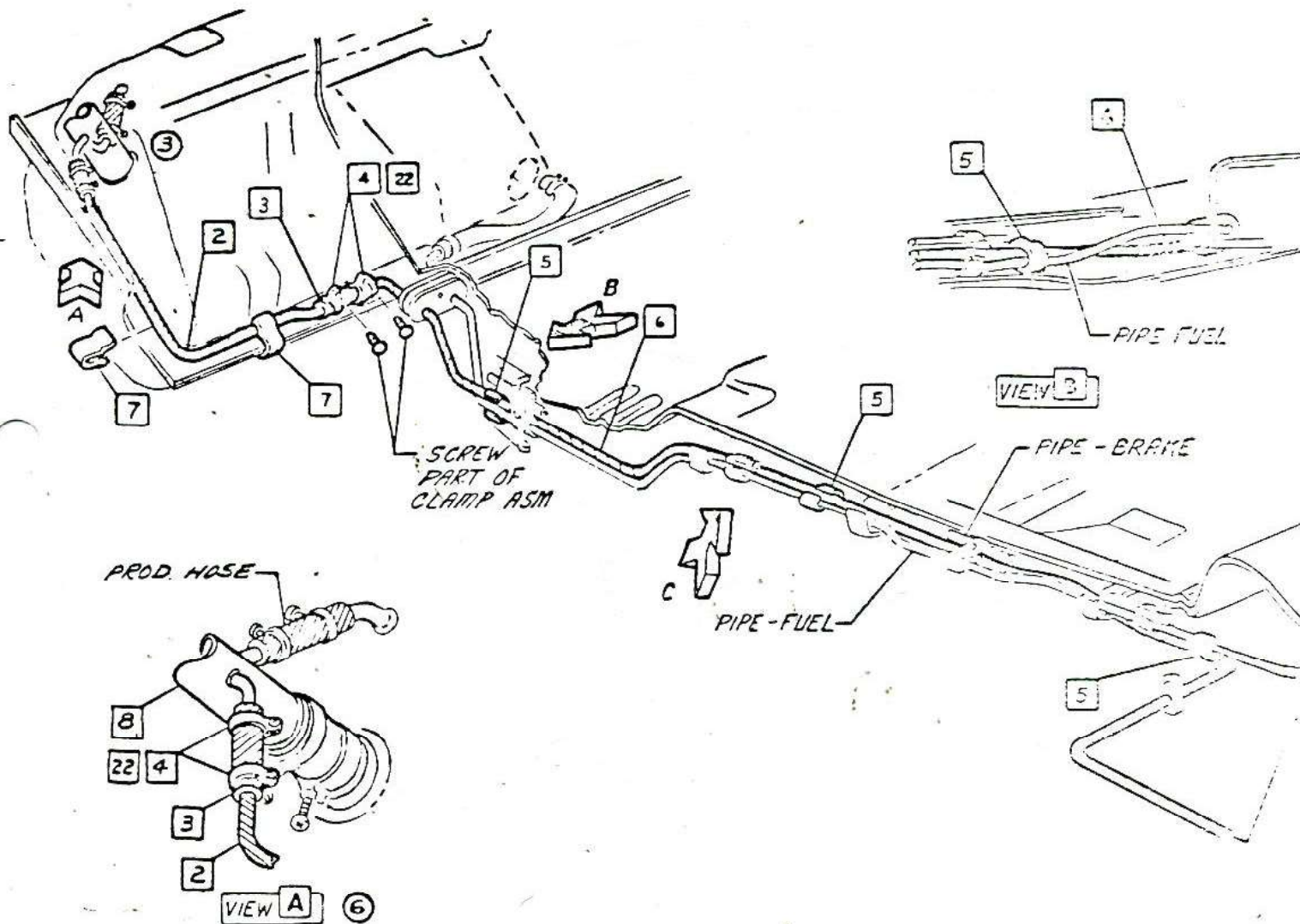


- △ 70-110 LBS IN
- △ 13-17 LBS FT
- △ 22-30 LBS IN
- △ 100-140 LBS IN

CHEVROLET MOTOR DIVISION, GMC				UPC	DATE	SYM	REVISION RECORD		AUTH.	DR	CK
TURBO-CHARGER-EXHAUST SYSTEM				L87	10-5-64	8	WAS 239898 CLAMP	66407	RS	DF	
					2-2-65	9	WAS 9409107 SCREW	15929	RS		
10700				9.		10	WAS 3851978 PLATE & SCREW REVISED	6855		CI	
					4-23-65	11	WAS 9411321 CLAMP		LS	CI	
DWG PREL B RS REF: Prel. 7 L-73078 L-76367				SHEET 9							
DATE REL 5-15 L- L- L-											

- ③ ①
④ ② 2 3886531 PIPE - FUEL RETURN
3 3767334 HOSE
① ④ 3783008 CLAMP ASM.
5 599119 CLIP

- ① ⑥ 3073642 PIPE - FUEL RETURN
7 3783012 CLIP
⑤ ⑧ 3883322 HOSE ASM.



▲ 7-11 LBS IN
▲
▲
▲

• CHEVROLET MOTOR DIVISION, GMC •				UPC	DATE	SYM	REVISION	RECORD
TURBO-CHARGER-FUEL & FUEL RETURN LINES.				L87	5-5-64	1	WAS 3883322 FUEL LINE	
10700				REF II.	5-2-65	2	WAS 3883322 FUEL	
DWG PREL 5-8 RS				10.	5-4-65	3	3883322 FUEL LINE	
DATE REL 5-8				SHORT		4	DWG 5-11-65	
REF: Prel. 8 L-72615 L-						5	WAS 3883322 FUEL	
L- L- L-						6	ITEM 5-11-65	
						13	VIEW A ADDED	

ASSEMBLY INSTRUCTIONS

3862100

CORVAIR 10000 SERIES

3862100 HOSE

Position ends of all clamps
3/8 to 1/2 in. away from sheet
metal for service & to avoid
noise & vibrations.

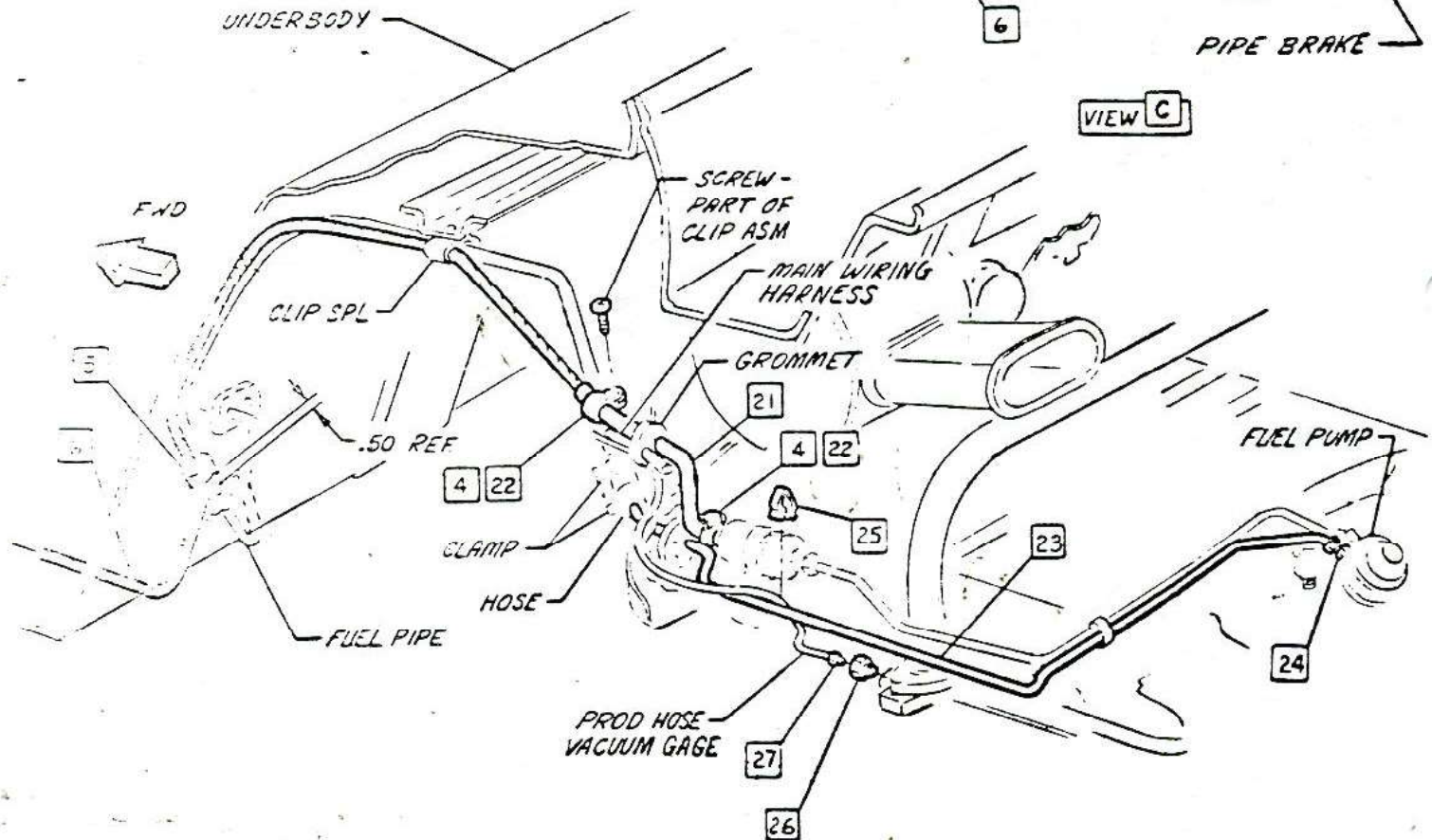
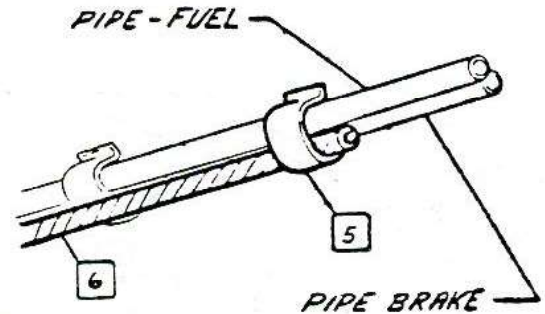
3862100 PIPE ASM. - FUEL

1-2555 CONNECTOR

- ⑦ 25 3819070 CLIP
- △ 26 3886605 FITTING
- △ 27 3886604 NUT ASM.

⑧ HOSE FITTING INSTRUCTIONS

INSERT HOSE INTO FITTING BOTTOMING
HOSE OUT. ROTATE NUT UNTIL FINGER
TIGHT. THEN MAKE TWO FULL TURNS.



SEE HOSE FITTING INSTRUCTIONS

115 - 125 LBS IN

130 - 125 LBS IN

GENERAL MOTOR DIVISION, GMC				UPC	DATE	SYM	REVISION RECORD	AUTH	DE	CK
TURBO-CHARGER - VACUUM GAGE HOSE, FUEL & FUEL RETURN LINES				L87	5-4-65	7	WAS 3724551 TAPE	702/1	51	
				REF 10.		8	HOSE FITTING INSTRUCTIONS ADDED			21
10700				11.						
DWG 10700-5-9				SHEET 1						
DATE PCL 5-12										
REF: Prel. 9										
L-72615										
L-60990										



PRELIMINARY

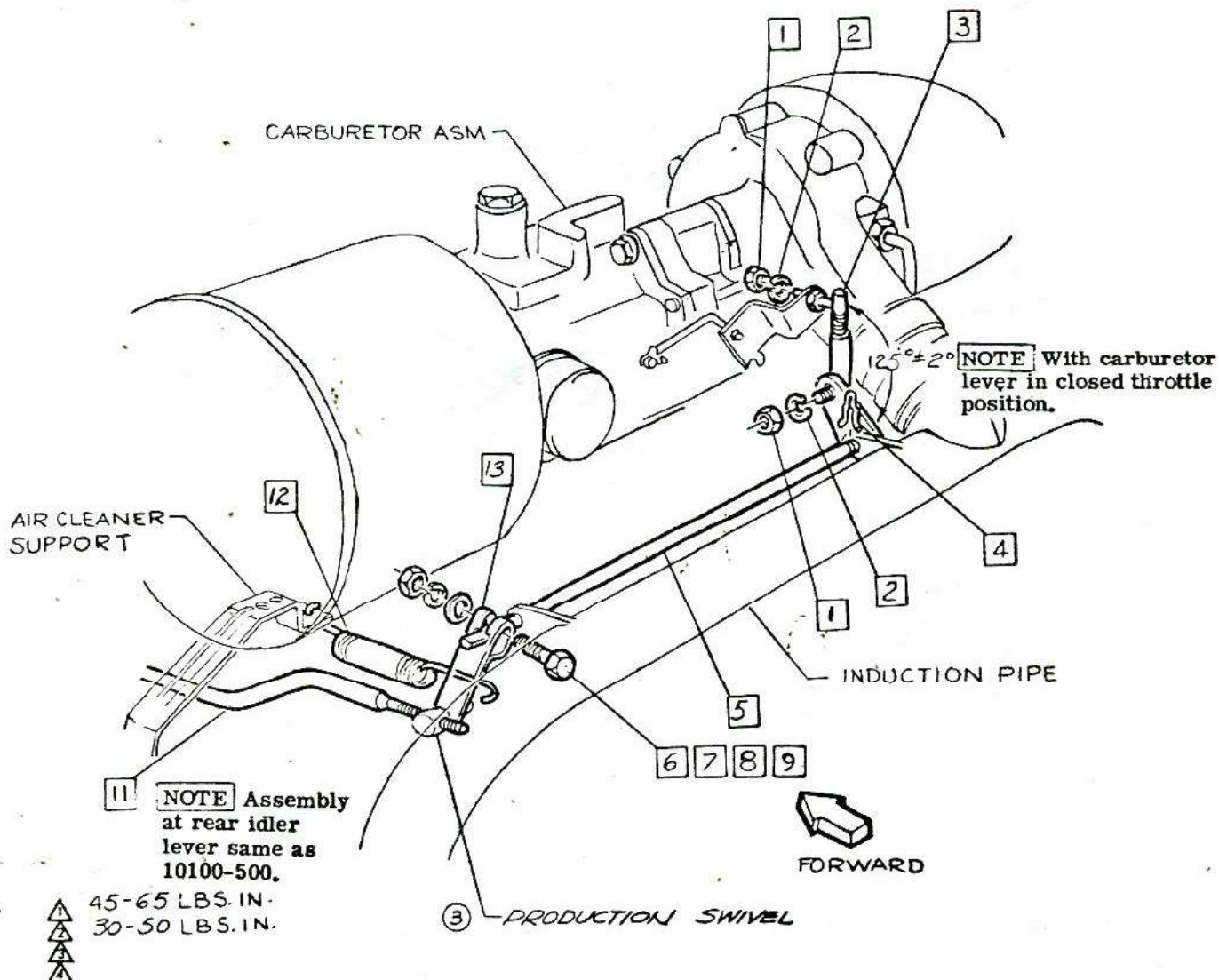
ASSEMBLY INSTRUCTIONS

3862100

CORVAIR 10000 SERIES

- | | | |
|---------------------------|--------------------|-------------------|
| 1 142247 NUT | 6 121900 BOLT | 11 3861884 ROD |
| 2 121753 L. WASHER | 7 120392 P. WASHER | 12 3791577 SPRING |
| 3 3824172 ROD | 8 103319 L. WASHER | 13 3817253 LEVER |
| 4 9418227 RETAINER | 9 134551 NUT | |
| 5 3824178 CROSS SHAFT ASM | 10 | |

NOTE ACCELERATOR CONTROL LINKAGE
ADJUSTMENT SAME AS 10100-500
EXCEPT AS SHOWN



• CHEVROLET MOTOR DIVISION, GMC •				UPC	DATE	SYM	REVISION RECORD	AUTH.	DR	CK
CARBURETOR CROSS SHAFT LINKAGE				L 87	7-6-64	2	REDRAWN & REVISED	64798	RC	DP
					2-23-65	3	WAS ITEM (10)	68594	IN	
10700				12.		4	3817253 SWIVEL RHYD.			CI
DWG PREL 5-5										
DATE REL 5-5				SHEET 1						
R.C. REF: Prel. f. L- 71490 L-										
L- L- L-										



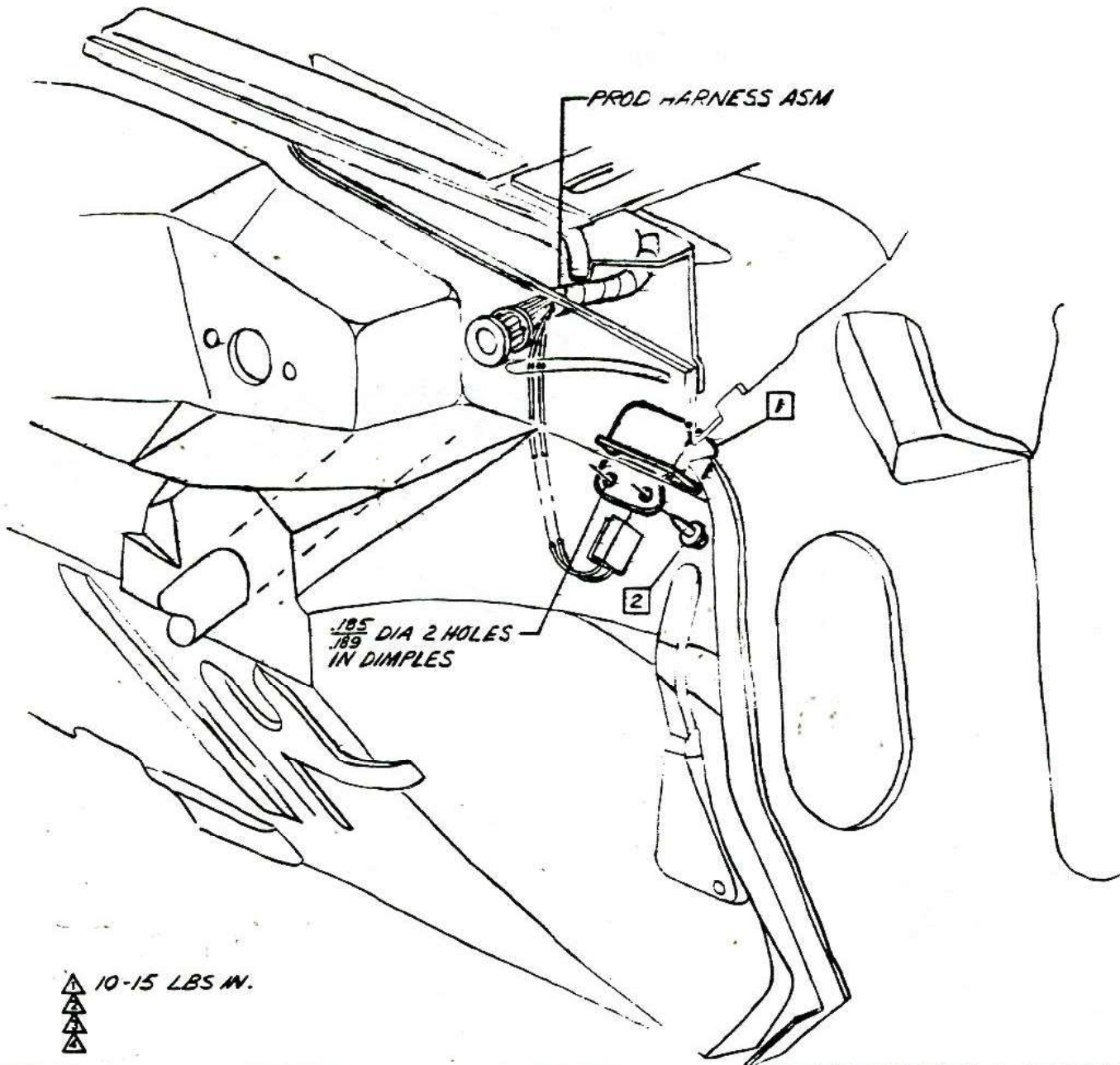
P H E T P O I E

ASSEMBLY INSTRUCTIONS

3862100

CORVAIR 10000 SERIES

- 1 1116952 BUZZER ASM-TEMP WARNING
2 9414192 SCREW



CHEVROLET MOTOR DIVISION, GMC		UPC	DATE	SYM	REVISION RECORD	AUTH	DR	CK
TURBO-CHARGER-TEMPERATURE WARNING BUZZER		L 87						
10700		13.						
DWG	JB	REF: ECR64369L-73258 L-						
DATE REL 8-27	DF	L- L- L-						
		SHEET						

1965-221

This document was created with Win2PDF available at <http://www.win2pdf.com>.
The unregistered version of Win2PDF is for evaluation or non-commercial use only.
This page will not be added after purchasing Win2PDF.