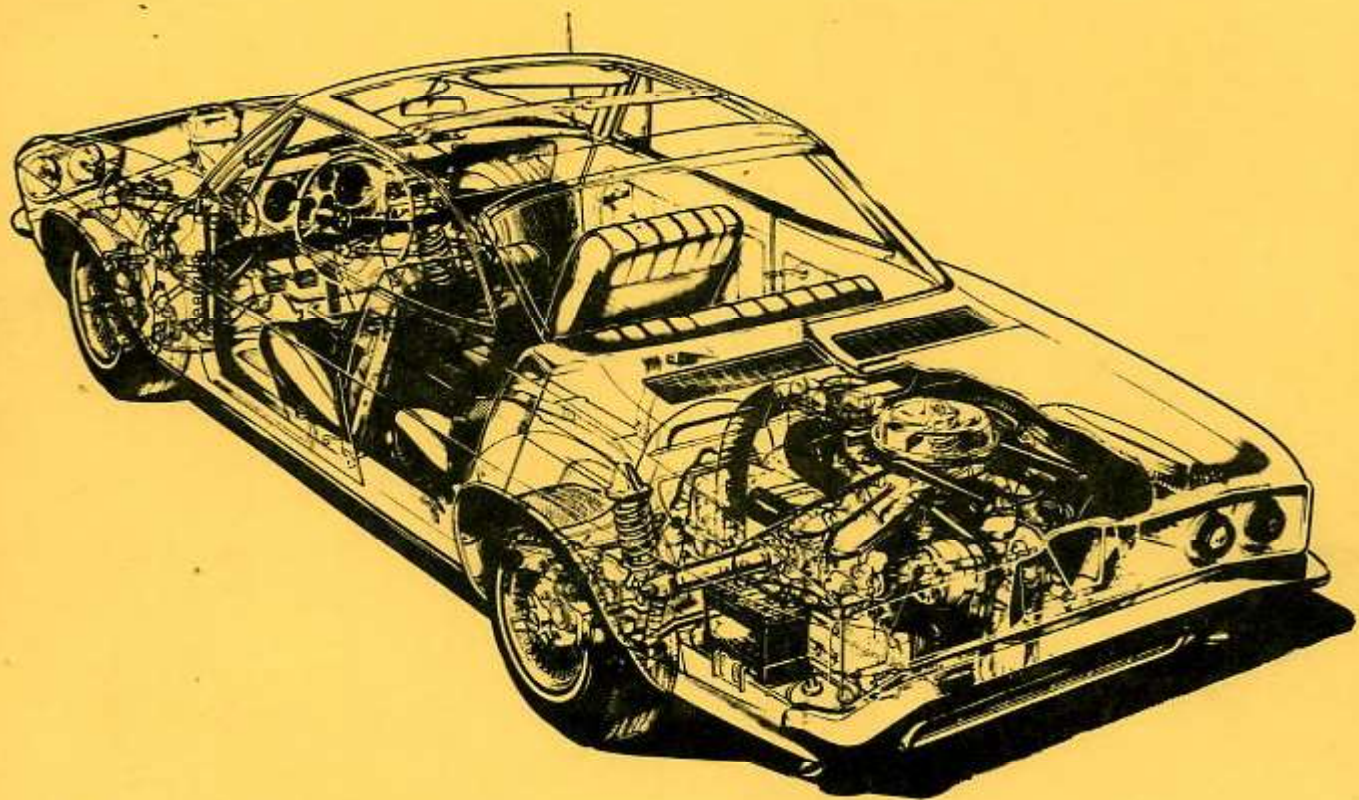


ASSEMBLY MANUAL



**1965
CORVAIR**

C7315

SECTION 7
TRANSMISSION



CHEVROLET

ASSEMBLY INSTRUCTIONS

3862100

CORVAIR 10000 SERIES

SHEET

TITLE

SHEET

TITLE

B1. CONTENTS

A B2. TRANS GEAR SHIFT CONTROL
B3. -ADJUSTMENT

1 B B4. TUBE & BRACKET & ROD ASM

2 C

B5. CONTROL ROD BOOTS

4

B5.5 CONTROL ROD LINKAGE ADJUSTMENT

B5.6

D

B6. TRANS-AXLE ASSEMBLY

C1. CLUTCH RELEASE BEARING

E

C2. PEDAL & CABLE

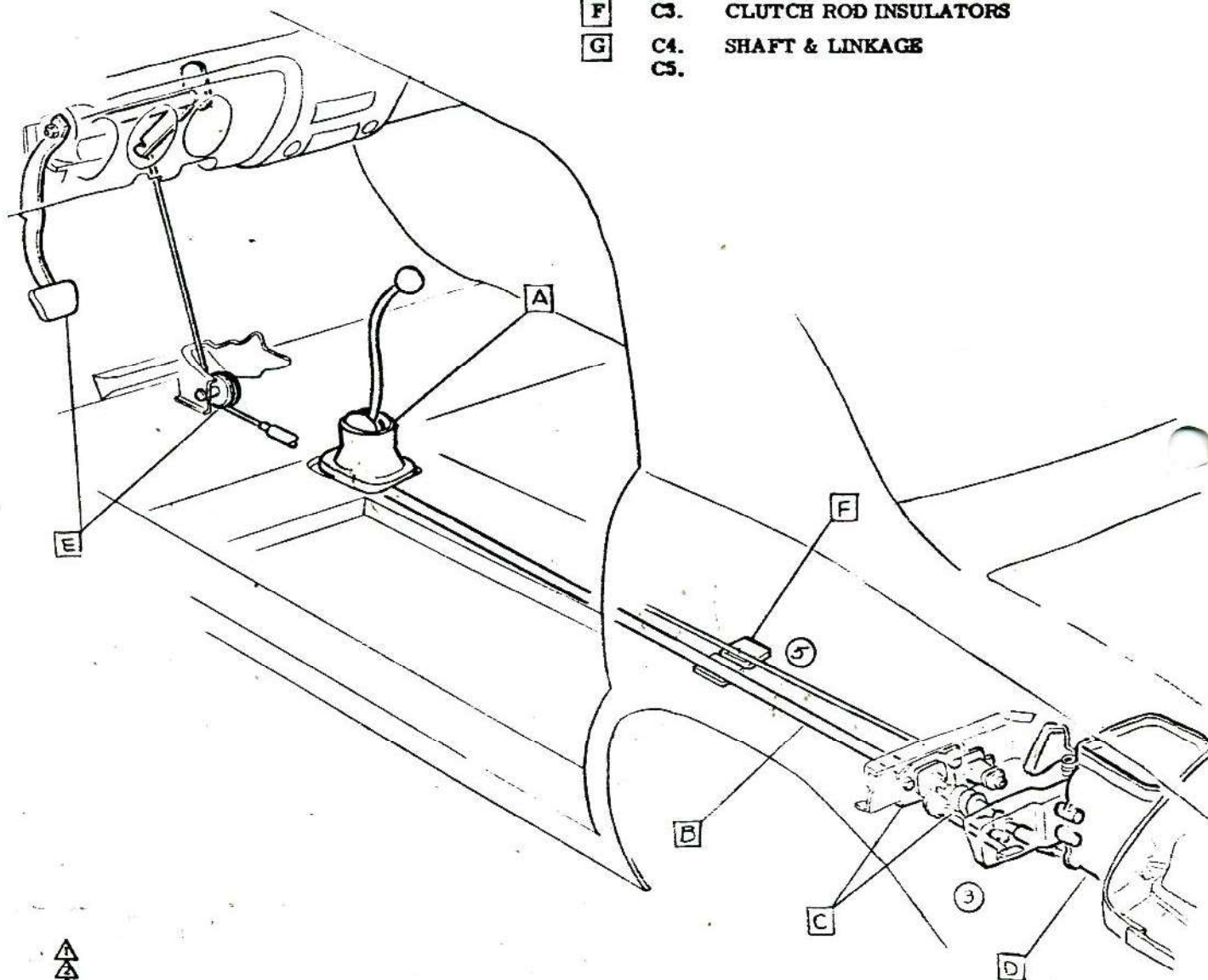
F

C3. CLUTCH ROD INSULATORS

G

C4. SHAFT & LINKAGE

C5.



• CHEVROLET MOTOR DIVISION, GMC •				UPC	DATE	SYM	REVISION RECORD	AUTH.	DR	CK
TRANSMISSION-CONTENTS				7	5-26-60	1	WAS CONTROL ROD & LINKAGE	25056	RM	
						2	WAS CONTROL ROD INSULATORS			
						3	DWG. REVISED			DF
					8-27-64	4	SHEETS B5.5 & B5.6 ADDED	25056	RM	DF
					9-14-69	5	INSULATOR DRAWING REVISED		SB	DF
10000				B1.						
DWG PREL 3-4 RFM REF: Prel. 31 L-71490 L-75978										
DATE REL 5-18				SHEET						

1965-84



ASSEMBLY INSTRUCTIONS

3862100

CORVAIR 10000 SERIES

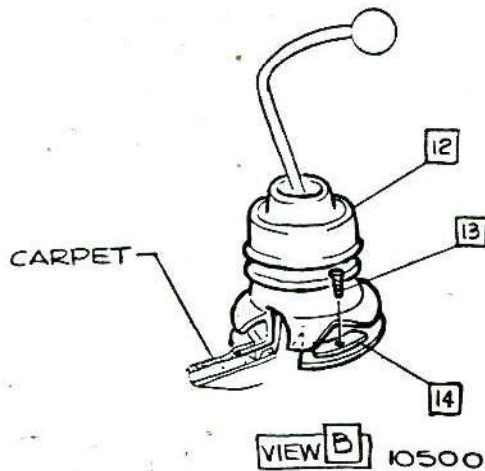
- 1 3788202 KNOB
- 2 3872873 HOUSING ASM
- 3 3872870 LEVER ASM-10100-500
- 4 3872871 -10700
- 5 3859286 SEAT
- 6 3851266 SPRING
- 7 3859288 BUSHING
- 8 3859287 CUP

- 9 3887056 SEAT
- 10 9422293 NUT
- 11 3862494 BOOT-10500
- 12 9415952 SCREW-10500
- 13 3859631 RETAINER-10500

FORWARD

NOTE Install housing with relief toward front of vehicle-used to lock tang (part of seat).

VIEW A

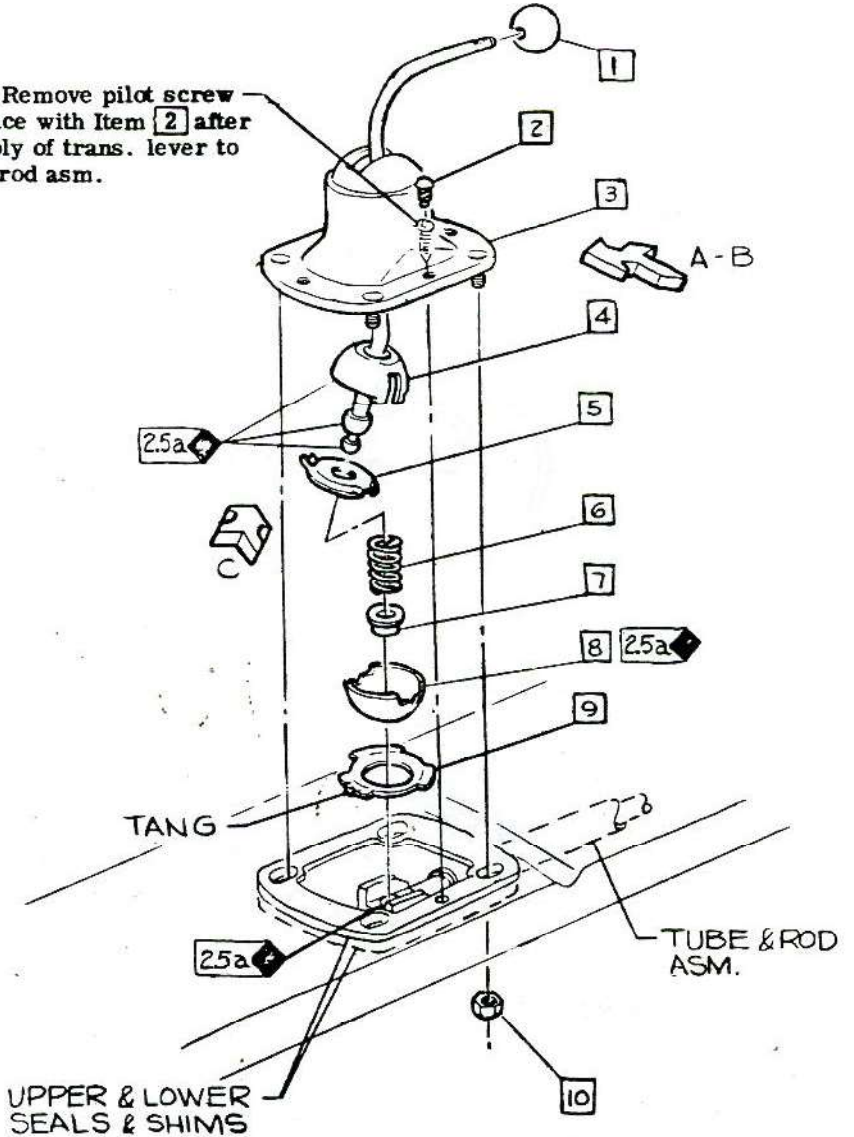


VIEW B

10500

- ▲ 75-95 LBS. IN.
- ▲ 10-15 LBS. IN.
- ▲
- ▲

NOTE Remove pilot screw & replace with Item 2 after assembly of trans. lever to trans. rod asm.



UPPER & LOWER SEALS & SHIMS

CHEVROLET MOTOR DIVISION, GMC				UPC	DATE	SYM	REVISION RECORD	AUTH	DR	CK
TRANS. GEARSHIFT CONTROL				7	3-4-65	1	9422373 SCREW REMOVED	15982	KM	CI
10000				REF. B3.						
DWG PREL. 2-27				B2.						
DATE REL. 5-1				REF. Prel. B3 L-74529 L-71490						
				L-75978 L-						
				✓ SHEET						

1965-85



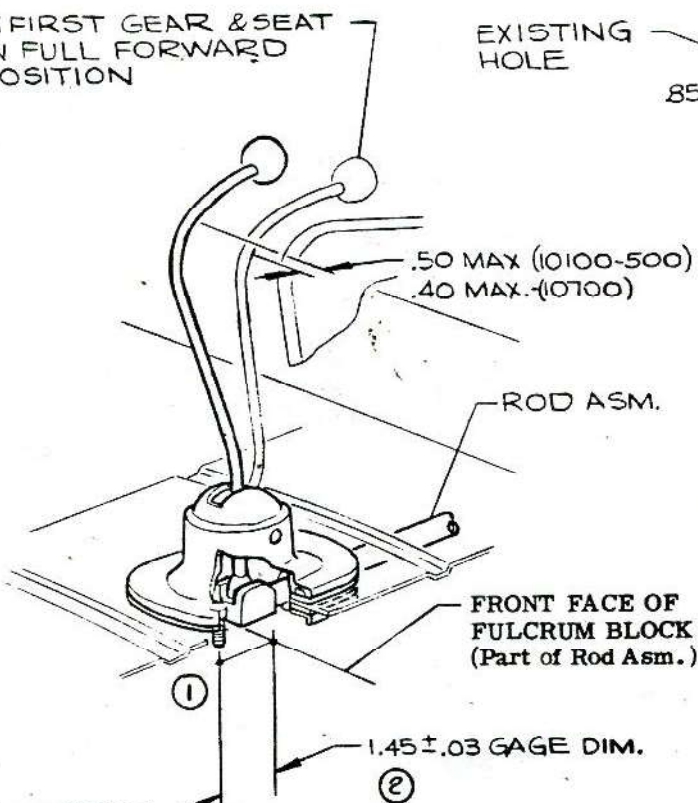
ASSEMBLY INSTRUCTIONS

3862100

CORVAIR 10000 SERIES

- ③ 21 3843505 SCREW
- 22 3861871 COVER
- 23 3861872 SEAL ASM
- ④ 24 9419753 NUT
- 25 3861845 BRACKET
- 26 9422654 "J" NUT

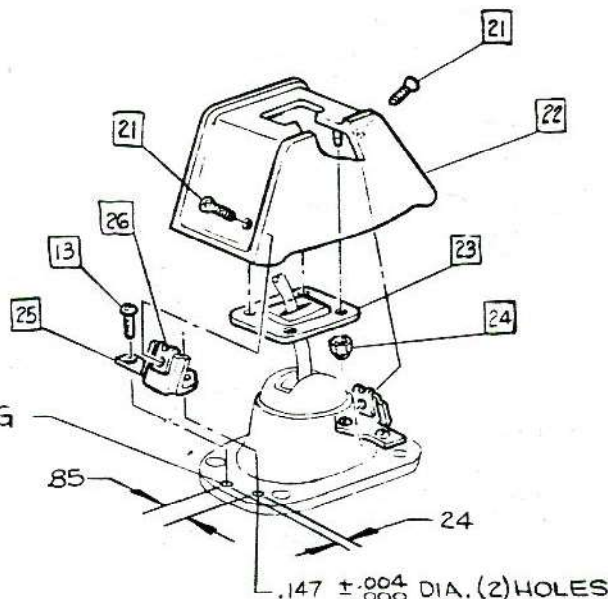
IN FIRST GEAR & SEAT
IN FULL FORWARD
POSITION



Q. OF FRONT
ATTACHING STUDS
ON HOUSING

- ▲
- ▲
- ▲ 15-20 LBS. IN.
- ▲ 10-15 LBS. IN.

EXISTING
HOLE



VIEW C 10700

Gearshift Adjustment Procedure

1. Before making adjustment, lash in system must be taken up by movement of rod asm towards rear of vehicle.
2. With seat in full forward position, place transmission in "reverse" gear & clamp to retain setting throughout gearshift adjustment.
3. Adjust to nominal dimensions as shown & tighten clamp to secure coupling to rod asm.

CHEVROLET MOTOR DIVISION, GMC		UPC	DATE	SYM	REVISION RECORD	AUTH.	DR	CK
TRANS. GEAR SHIFT CONTROL ADJUSTMENT		7	6-26-64	1	DWG. REVISED	63.56	RM	DF
			7-27-64	2	1.13 ± .03 GAGE DIM. REMOVED	65618	RM	
				3	TORQUE ADDED			DF
			4-23-65	4	WAS .152 ± .004 DIA.	79713	RM	CI
10000		REF B2. B3.						
DWG PREL 3-4	RFM	REF: Prel. B4	L-71490	L-73340				
DATE REL 5-18		L-	L-75978	L-				
		SHEET X						



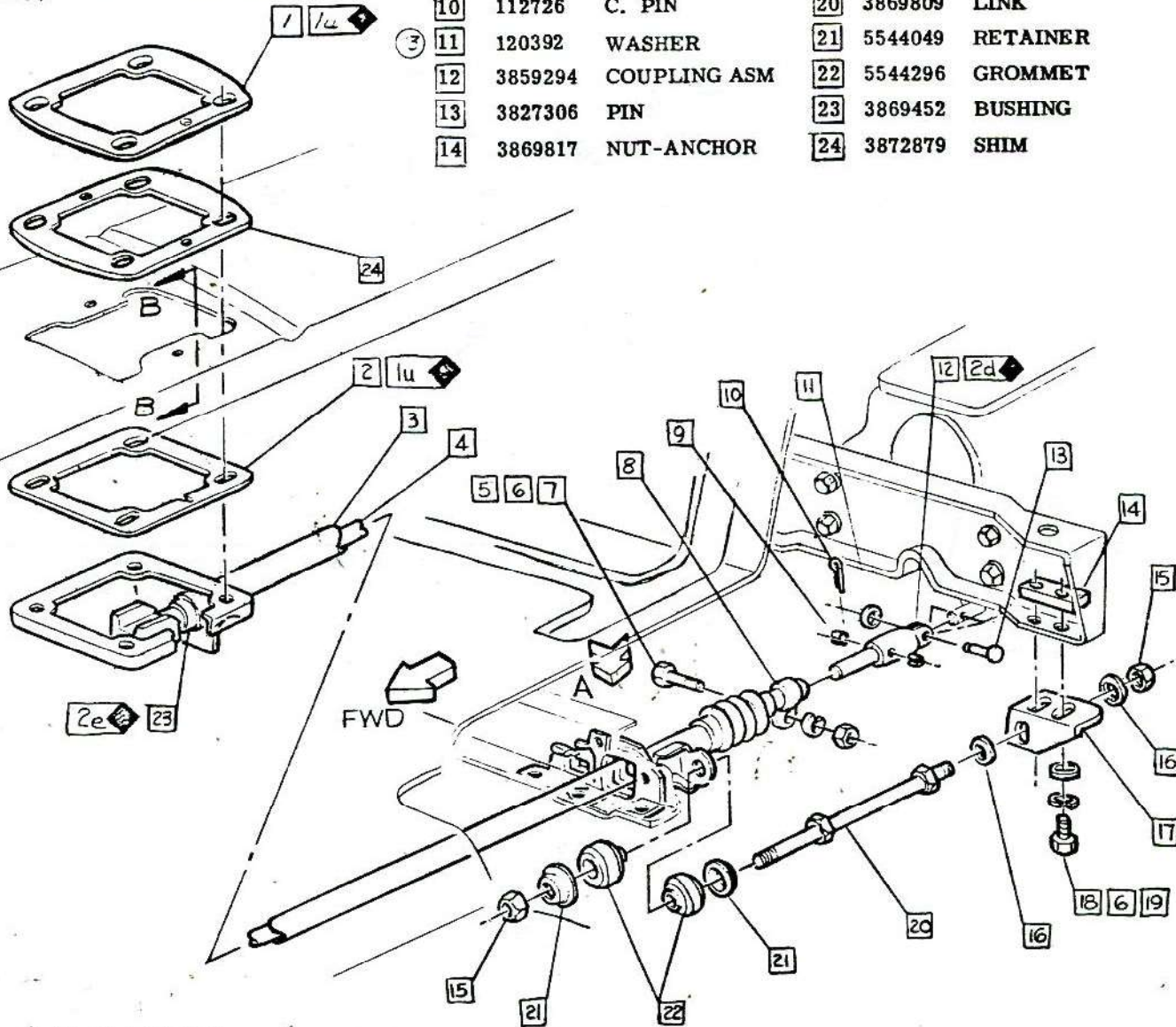
P 0 3 0 0 0 0 7

ASSEMBLY INSTRUCTIONS

3862100

CORVAIR 10000 SERIES

- | | | | | | | | | | |
|----|---------|------------------|---------|---------|-----------|--------------|---------|-----------|-----------|
| 1 | 3872876 | SEAL-UPPER | 5 | 179820 | BOLT | 4 | 15 | 3816622 | NUT |
| 2 | 3869499 | SEAL-LWR.(WHITE) | 6 | 103320 | L. WASHER | 16 | 120394 | P. WASHER | |
| | 3872877 | -OPT. (GREEN) | 7 | 102634 | NUT | 17 | 3869451 | BRACKET | |
| 8 | 3872878 | -OPT. (BLACK) | 8 | 3742920 | CLAMP | 3 | 18 | 443899 | BOLT |
| 3 | 3869804 | TUBE ASM | 9 | 3796886 | PIN | 10 | 19 | 3792420 | P. WASHER |
| 12 | 4 | 3879760 | ROD ASM | 10 | 112726 | C. PIN | 20 | 3869809 | LINK |
| | | | | 11 | 120392 | WASHER | 21 | 5544049 | RETAINER |
| | | | | 12 | 3859294 | COUPLING ASM | 22 | 5544296 | GROMMET |
| | | | | 13 | 3827306 | PIN | 23 | 3869452 | BUSHING |
| | | | | 14 | 3869817 | NUT-ANCHOR | 24 | 3872879 | SHIM |



- ▲ 12-16 LBS FT.
 ▲ 30-50 LBS IN.
 ▲ 14-22 LBS FT.
 ▲ 11-15 LBS FT.

CHEVROLET MOTOR DIVISION, GMC				UPC	DATE	SYM	REVISION RECORD	AUTH.	DR	CK
TRANS TUBE & BRACKET & ROD ASM				7	10-26-64	8	"BLACK" WAS GREEN	66069	RJ	
10000				REF. B5.	11-10-64	9	WAS 9418128 P.WASHER	15924	RM	DF
DWG PREL 3-4 RFM				B4.	11-27-64	10	WAS 446363 P.WASHER	15924	RM	DF
DATE DEL 3-76				SHEET	1-19-65	11	WAS 120634 NUT		RM	DF
REF: PREL. B5 L-75895 L-7-490					3-19-65	12	WAS 3869805 ROD	68911	JT	CI
L-75978 L-						13	WAS 446188 WASHER	68947	LA	CI



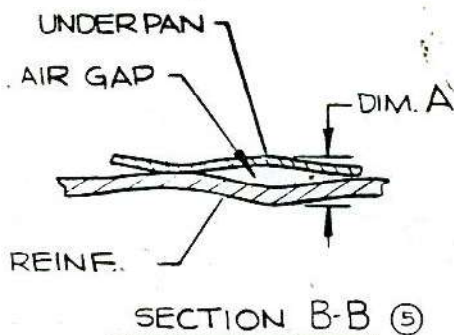
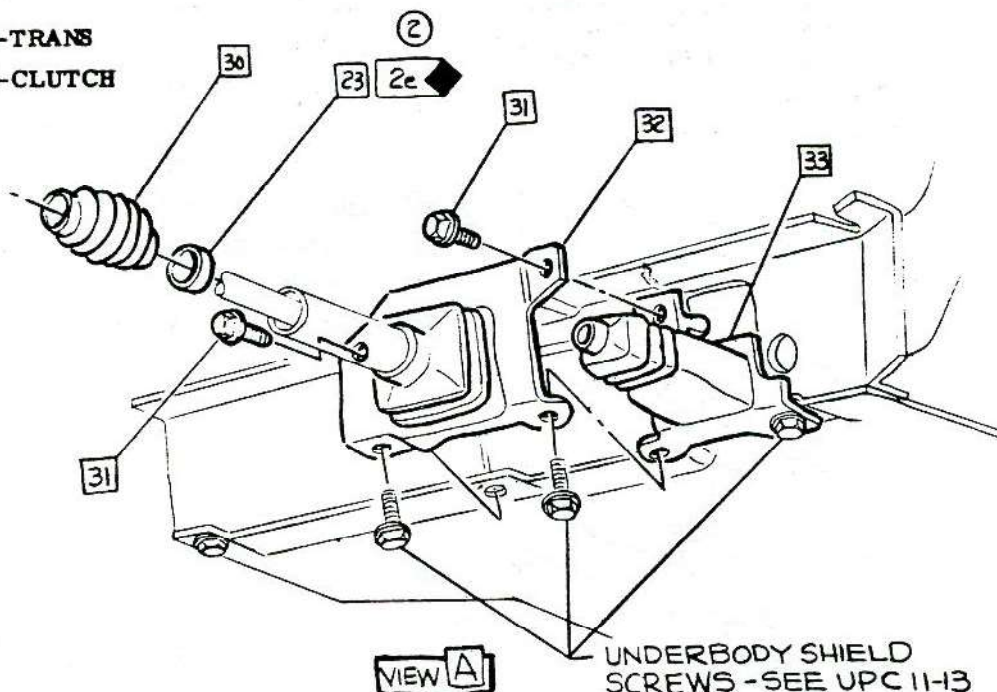
CHEVROLET

ASSEMBLY INSTRUCTIONS

3862100

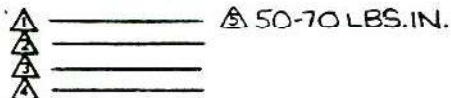
CORVAIR 10000 SERIE

- 30 3869806 BOOT
- 31 9421803 SCREW
- 32 3869808 BOOT ASM-TRANS
- 33 3869807 BOOT ASM-CLUTCH



6

DIM A (MAX.)	For the body sandwich thickness shown, use the following lower seals & shims.			
	WHITE	GREEN	BLACK	SHIM
.090 - .104			1	2
.105 - .118			1	1
.119 - .133			1	
.134 - .147		1		
.148 - .161	1			3
.162 - .178	1			2
.179 - .193	1			1
.194 - .209	1			



CHEVROLET MOTOR DIVISION, GMC		UPC	DATE	SYM	REVISION RECORD	AUTH.	DR.	CK.
TRANS CONTROL ROD BOOTS		7	10-26-64	1	REDRAWN & REVISED	65056	FM	DF
			7-28-64	2	LUB "2e" ADDED	65056	PM	DF
			2-17-64	3	NAS 30-50 LBS. IN.	65056	RM	
				4	ITEM 33 ADDED			DF
			9-26-64	5	SECT. B-B ADDED	66069	RM	
				6	"THICKNESS" CHART ADDED			DF
			11-27-64	7	NAS 94-27603 SCREW		RM	DF
10000		REF. B4.						
DWG PREL 3-4 RFM REF: Prel. B6 L-71490 L-75978		B5.						
DATE REL 5-1		SHEET 1						

1965-88

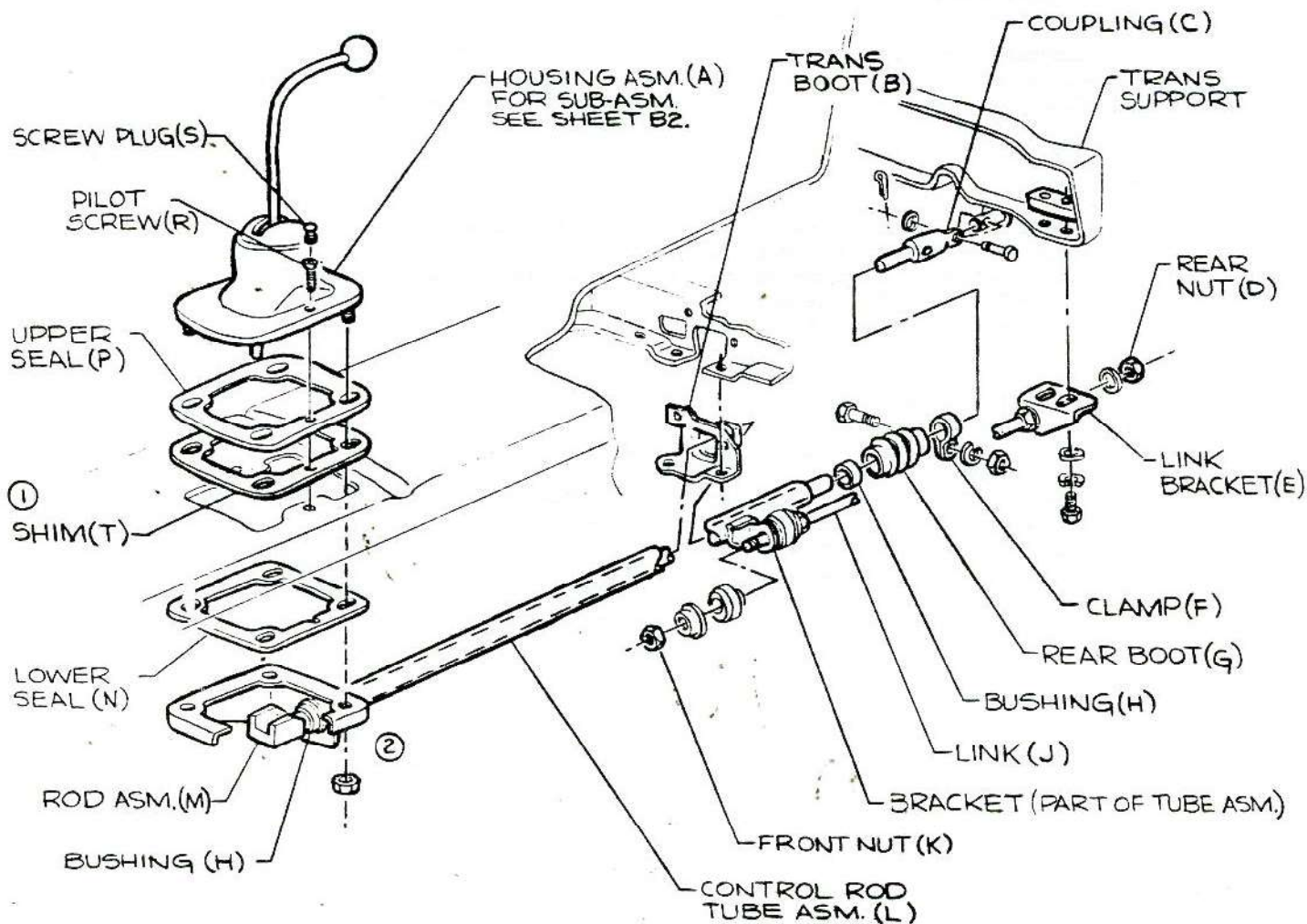


CHEVROLET

ASSEMBLY INSTRUCTIONS

3862100

CORVAIR 10000 SERIES



CHEVROLET MOTOR DIVISION, GMC				UPC	DATE	SYM	REVISION RECORD		AUTH	DR	CK
TRANS CONTROL ROD LINKAGE INSTALLATION				7	9-28-64	1	"SHIM(T)" ADDED		66069	RM	
10000						2	P.WASHER REMOVED				DF
DWG REF: ECR 65056 L-75978 L-				B5.5							
DATE REL 8-27 DF L- L- L-					<input checked="" type="checkbox"/> SHEET						

1965-89



CHEVROLET

ASSEMBLY INSTRUCTIONS

3862100

CORVAIR 10000 SERIES

SUGGESTED TRANS. CONTROL LINKAGE INSTALLATION

- ① 1. Lubricate upper surface of Upper Seal (P). Assemble Shim (T) on projections of Upper Seal & install with projections down. **[NOTE]** For correct lower seal & quantity of shims to be used. See Thickness Chart-sheet B5.
2. Lubricate & assemble shift lever, spring seat, spring, bushing, cup & secure with lower seat into Housing Sub-asm. (A).
3. Place Housing Sub-asm over Upper Seal & secure with Pilot Screw (R).

SUB-ASSEMBLY OF CONTROL ROD TUBE

4. Lubricate & assemble Bushings (H) in Control Rod Tube Asm. (L).
5. Slide Trans. Boot (B) on Tube Asm.
6. Slide Rod Asm.(M) into Tube Asm. Position Rear Boot (G) & loosely attach clamp (F) on Rod Asm.with attaching parts.
7. Assemble Link (J) to bracket (Part of Tube Asm.) with bushings & retainers. Tighten Front Nut (K) to recommended torque. Slide Link Bracket (E) on Link & loosely secure with with Rear Nut (D).
8. Install above Tube Sub-asm.in tunnel and couple to trans.
9. Lubricate bottom surface of Lower Seal (N) & place with curved flanges up & notch of left side between Tube Asm. & underbody. Secure Housing Sub-asm. with attaching locknut.
- ② 10. Shove Link Bracket against shoulder of Link & attach to trans support with attaching parts. Then tighten Rear Nut on Link.
11. Remove Pilot Screw & replace with Screw Plug (S).
12. Move Rod Asm.to gage dim.(See sheet B3.).Slide Coupling (C) on Rod Asm. until transmission is in "REVERSE". Tighten Clamp.



CHEVROLET MOTOR DIVISION, GM Corp.			UPC	DATE	SYM	REVISION RECORD	AUTH.	DR	CK
TRANS CONTROL ROD LINKAGE INSTALLATION			7	9-28-66	1	STEP 1 REVISED	66069	RM	
					2	LOCKNUT WAS WASHER & NUT			DF
10000			B5.6						
DWG									
DATE REL. 8-27	DF	REF: ECR 65056L-75978 L-	SHEET						

1965-90

+

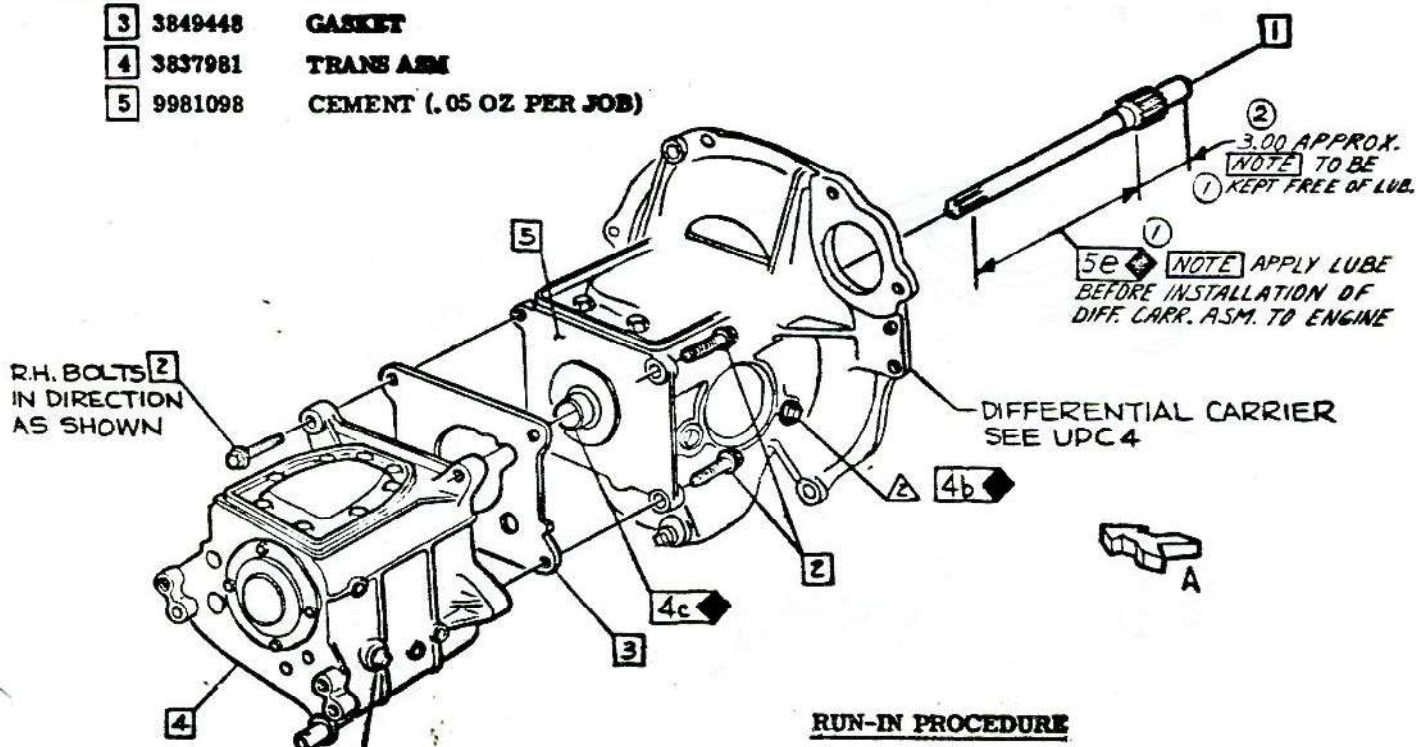


EXPLODED

ASSEMBLY INSTRUCTIONS

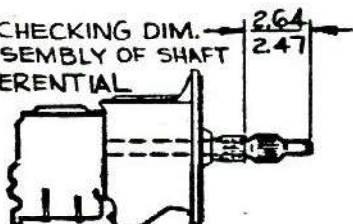
3862100 CORVAIR 10000 SERIES

- 1 3840789 SHAFT-INPUT
- 2 3782692 BOLT
- 3 3849448 GASKET
- 4 3837981 TRANS ARM
- 5 9981098 CEMENT (.05 OZ PER JOB)



NOTE: FILL UNTIL FLUSH TO .12 BELOW BOTTOM OF FILL HOLE

NOTE: CHECKING DIM. FOR ASSEMBLY OF SHAFT TO DIFFERENTIAL



VIEW A

- 35-50 LBS FT
- 24-32 LBS FT
- 12-16 LBS FT

RUN-IN PROCEDURE

BENCH FIXTURE After transmission (3 & 4 speed) & differential carrier are mated and filled with lube, motor trans-axle assembly on a bench fixture using the input shaft as a drive as follows:

- 0-3000 RPM in 30 seconds
- 3000 RPM for 30 seconds
- For a total run of 60 seconds

OPTIONAL METHOD After transmission (3 & 4 speed) & differential carrier are mated, filled with lube & installed in vehicle, run-in trans-axle assembly using vehicle engine as follows:

- 0-55 MPH (speed reading) in 30 seconds
- Shifting through the gears.
- 55 MPH for 30 seconds
- For a total run of 60 seconds

The following CAUTIONS must be observed if optional method is used.

1. A minimum of vehicle driving before run-in. (5 to 10 ft. max.)
2. Shift slowly through gears to attain 55 MPH.
3. Rear wheels must clear floor & axles must be in normal driving position.

CHEVROLET MOTOR DIVISION, GMC		UPC	DATE	SYM	REVISION RECORD	AUTH.	DR	CK
TRANS-AXLE ASSEMBLY		7	9-23-65	1	LUBE NOTE ADDED (2) PLACES	70036	LS	
10000				2	WAS 7.00			CT
DWG PREL. 2-27		B6.						
DATE REL. 2-27								
REF. Pmt. B2 L-71468 L-64295								
L- L- L-								
SHEET								



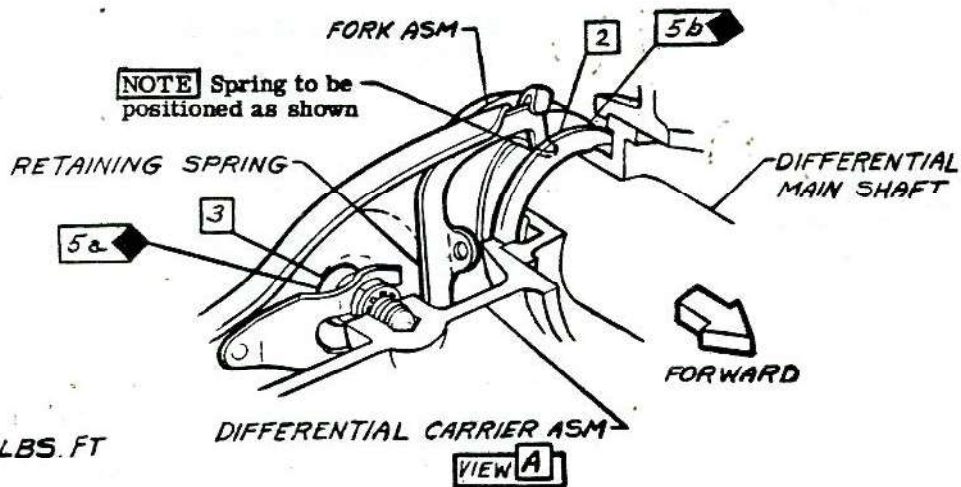
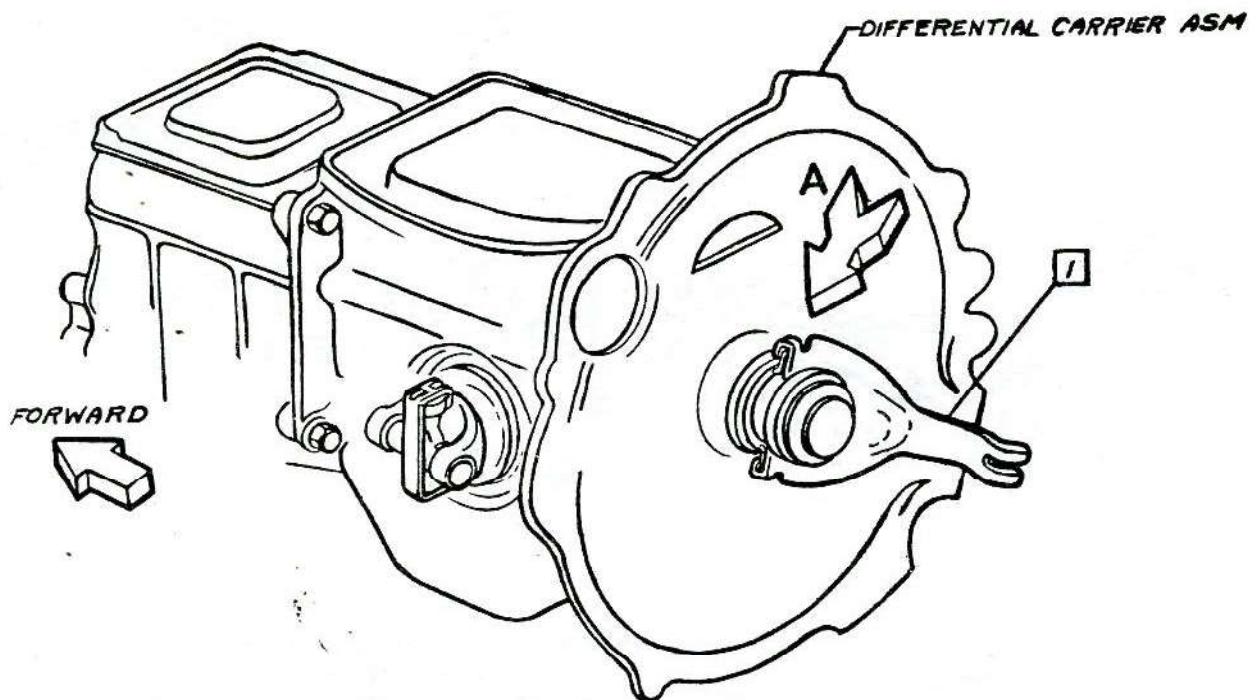
CHEVROLET

ASSEMBLY INSTRUCTIONS

3862100

CORVAIR 10000 SERIES

- 1 3829808 FORK ASM. -CLUTCH
2 907538 BEARING ASM. RELEASE
3 3850229 STUD-CLUTCH FORK BALL



30-40 LBS. FT
▲
▲
▲

CHEVROLET MOTOR DIVISION, GMC				UPC	DATE	SYM	REVISION RECORD	AUTH.	DR	CK
CLUTCH RELEASE BEARING				7						
10000				C1.						
DWG PREL 226-61	SB	REF: Prel. C1	L- 71402	L-						
DATE REL 226-64		L-	L-	L-						
				SHEET	X					

1965-92



CHEVROLET

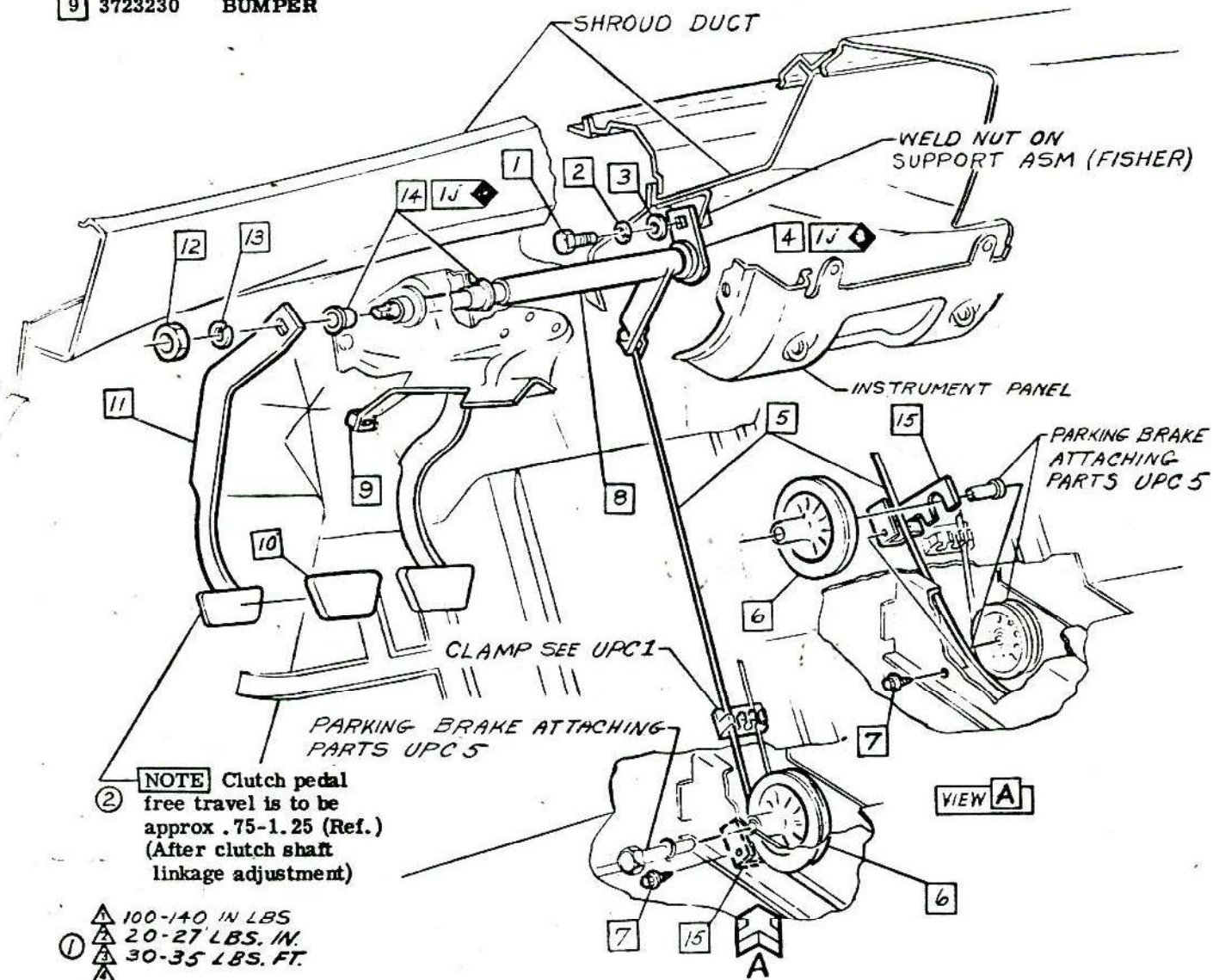
ASSEMBLY INSTRUCTIONS

3862100

CORVAIR 10000 SERIES

- ① 1 100121 BOLT
 2 103320 L. WASHER
 3 3728666 SPL WASHER
 4 3859478 BEARING ASM
 5 3859479 CABLE ASM
 6 3859480 PULLEY
 ② 7 9419699 SCREW
 8 3859474 SHAFT ASM
 9 3723230 BUMPER

- 10 6256368 COVER PEDAL
 11 3859471 PEDAL ASM
 ③ 12 114496 NUT
 13 103329 L. WASHER
 14 3798256 BUSHING
 15 3866574 RETAINER



CHEVROLET MOTOR DIVISION, GMC				UPC	DATE	SYM	REVISION RECORD	AUTH	DR	CK
CLUTCH PEDAL & CABLE				7	7-8-64	1	TORQUE 2 & 3 REVERSED	64798	SB	DP
10000				C2.	10-26-64	2	PEDAL NOTE ADDED	66547	SB	DF
DWG PRL 227-64 SB REF: PRL C2 L- 71402 L-				✓ SHEET						
DATE REL 5-12-64 L- L- L-										

1965-93



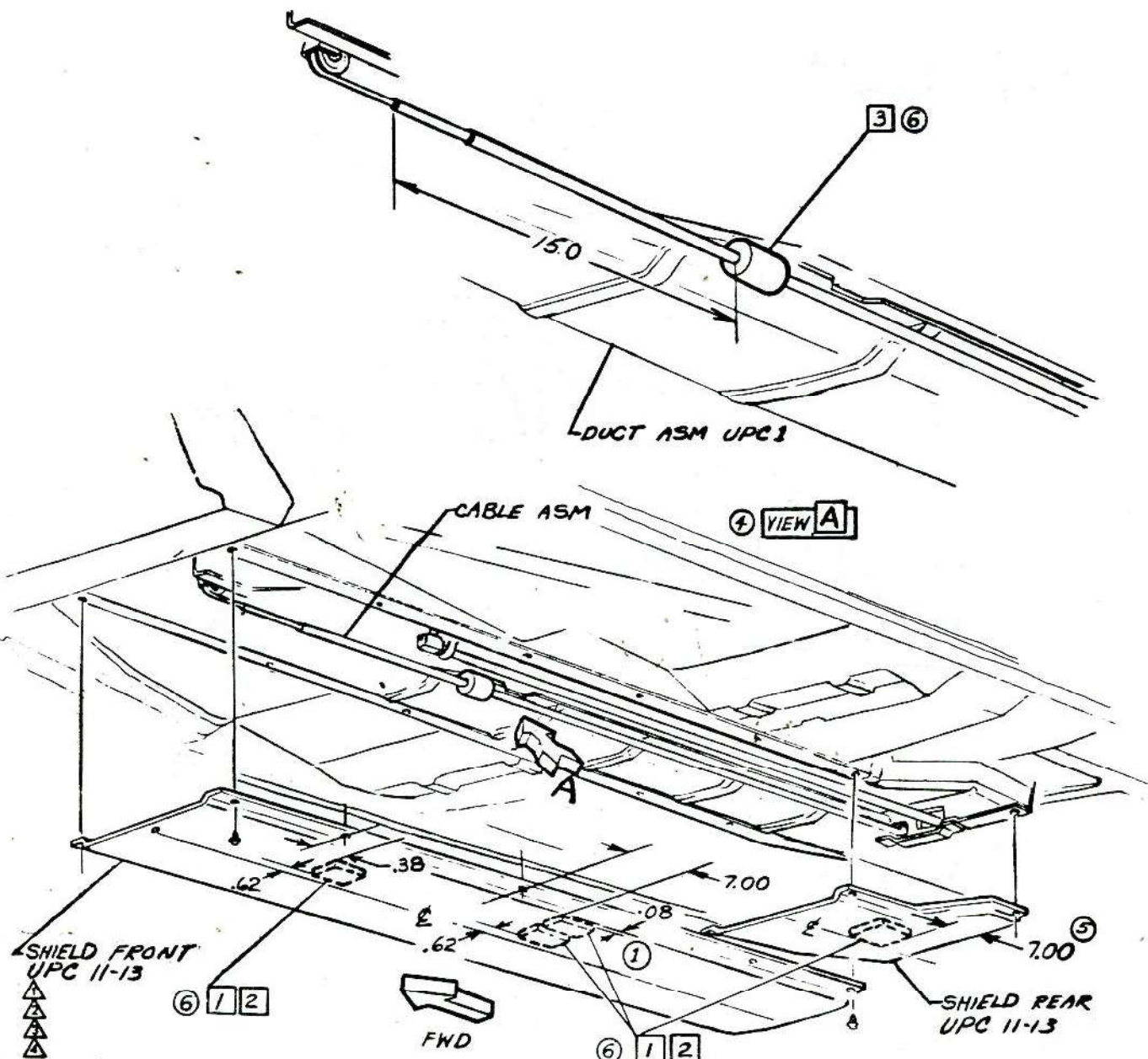
CHEVROLET

ASSEMBLY INSTRUCTIONS

3862100

CORVAIR 10000 SERIES

- ① 3862400 INSULATOR
- ② 9981098 CEMENT .07 OZ.
- ③ 3871592 INSULATOR



CHEVROLET MOTOR DIVISION, GMC		UPC	DATE	SYM	REVISION RECORD	AUTH	DR	CK
CLUTCH ROD INSULATORS		7	9-14-64	1	ITEM 1 & DIM ADDED	66483	SB	
10000		C3.		2	WAS .06 OZ			DF
DWG PABLS-11-13			11-23-64	3	ITEM 3 ADDED	15912	SB	
DATE: REL 5-19-69				4	VIEW A REVISED			
REF: Pmt. C.5 L-71402 L-				5	WAS 2.38 DIMENSION			DF
L- L- L-				6	LUBE SYM REMOVED	15961	MB	
		SHEET IX			(3) PLACES			CI

1965-94



CHEVROLET

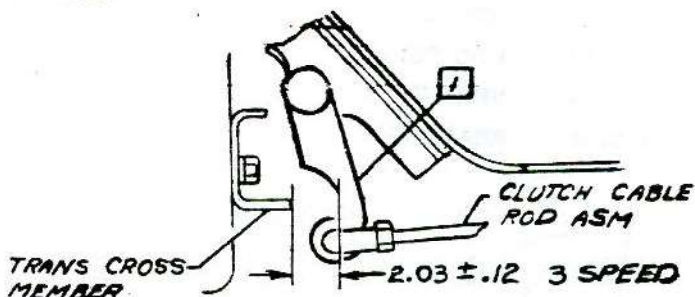
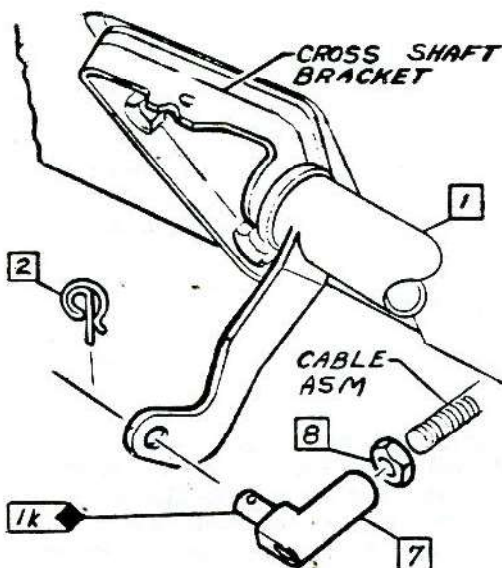
ASSEMBLY INSTRUCTIONS

3862100

CORVAIR 10000 SERIES

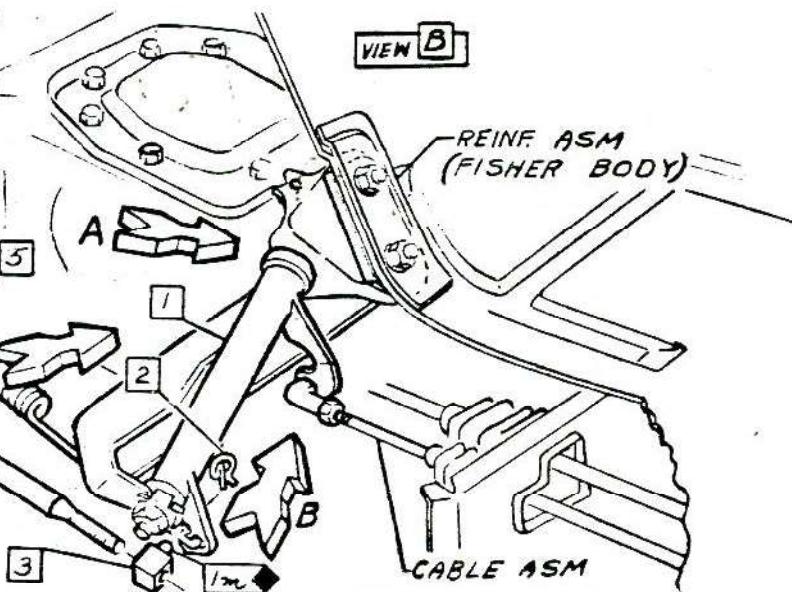
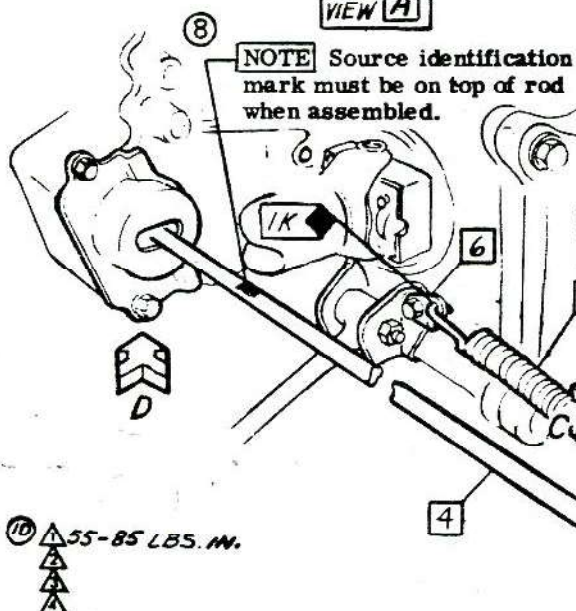
- 1 3870177 SHAFT ASM
- 2 3749084 CLIP SPECIAL
- 3 3764588 SWIVEL
- 4 3870139 ROD PULL
- 5 3870179 SPRING
- 6 3870149 BRACKET

- 7 3870176 SWIVEL
- 8 9419912 NUT



CLUTCH ADJUSTMENT PROCEDURE

- 1) Drive Nut 8 to within "1/8" of end of threads on Clutch Cable Rod asm.
- 2) Install tool to tension Clutch Cable Rod Asm to 15 lbs and thread Swivel 7 to line up with hole in Shaft Asm 1 inboard Lever with Lever located to dimension shown from the Trans Cross Member. Assemble swivel 7 to lever with Clip 2.
- 3) Torque Nut 8 to Swivel 7 using indicated torque.
- 4) Install Spring 5 to Bracket 6 & to Shaft 1.
- 5) Manually pull Clutch Pull Rod 4 forward until slack is taken up at Clutch fork. With Clutch Pull Rod 4 in this position align Swivel 3 with hole in outboard to Shaft Asm Lever. Back off Swivel 3, 2 turns and assemble to lever with Clip 2.
- 6) Remove tension tool.



CHEVROLET MOTOR DIVISION, GMC				UPC	DATE	SYM	REVISION RECORD	AUTH.	DR	CK
CLUTCH SHAFT & LINKAGE				7	3-4-64	B	IDENTIFICATION NOTE ADDED 15868 SB/D			
10000				REF. C5	3-4-65	9	ADJ. PROCEDURE, STEP 5, REVISED 63473 KM/L			
DWG PREL 2274 SB REF: PREL. C3 L-7/402 L-76230				C4.	5-4-65	10	TORQUE (1) WAS 8-12 LBS. FT. 70791 LS/CI			
DATE REL 4-1-64				X SHEET						



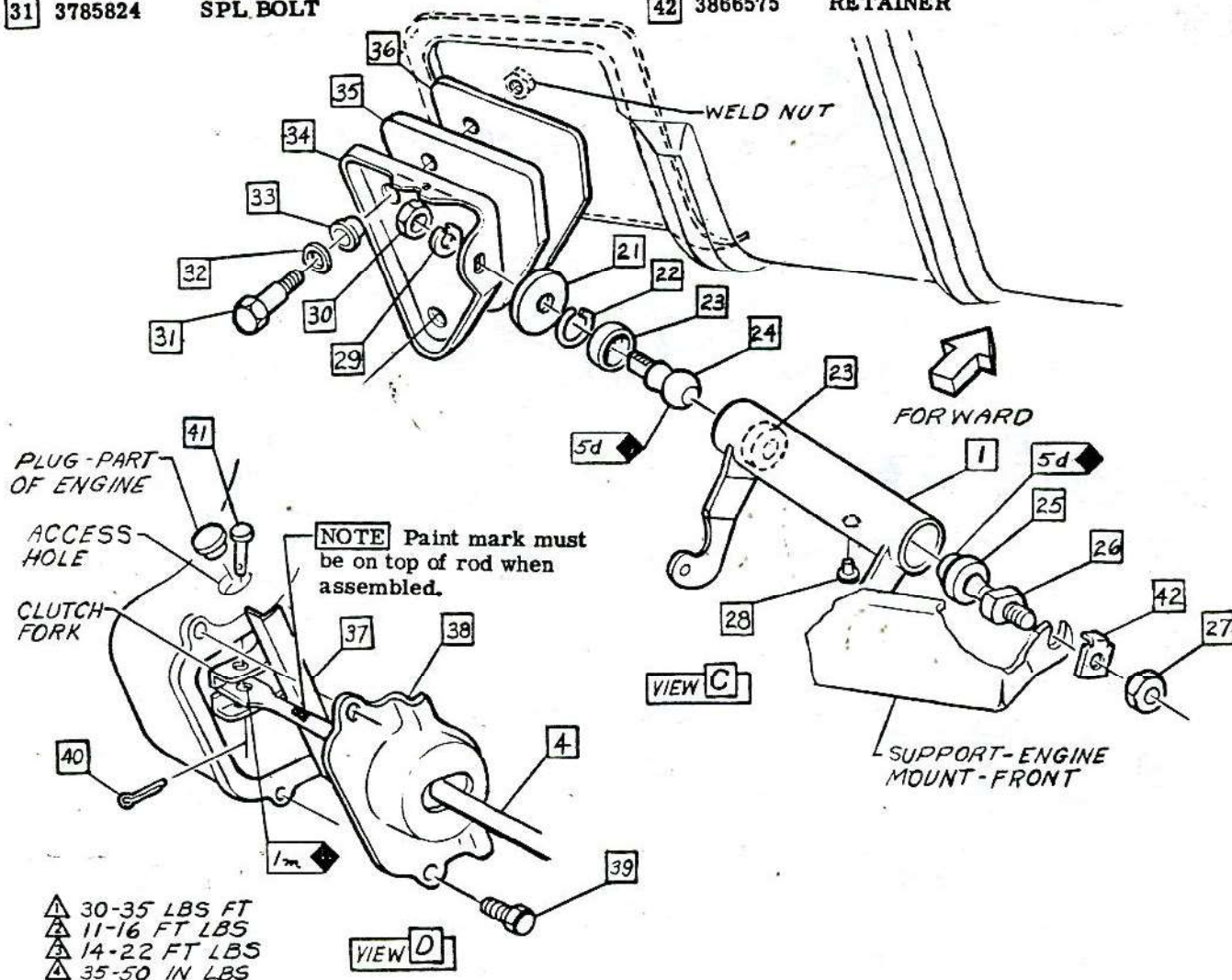
CHEVROLET

ASSEMBLY INSTRUCTIONS

3862100

CORVAIR 10000 SERIES

- | | | | | | |
|------|---------|------------|------|---------|---------------|
| 21 | 3743360 | SEAL | 32 | 3710593 | SPL WASHER |
| 22 | 3750696 | SPRING | 33 | 3785826 | SPL GROMMET |
| 23 | 3743349 | SEAT | 34 | 3859489 | BRACKET |
| 24 | 3736530 | STUD | 35 | 3859490 | INSULATOR |
| 25 | 1354671 | SPL WASHER | 36 | 3859491 | REINFORCEMENT |
| 26 | 3859488 | STUD | 37 | 3859868 | SEAL |
| ① 27 | 102637 | NUT | 38 | 3859494 | SHIELD |
| 28 | 3828498 | SPL PLUG | ④ 39 | 120706 | BOLT |
| ① 29 | 103321 | L. WASHER | ⑤ 40 | 103373 | C. PIN |
| ② 30 | 9419815 | NUT | 41 | 3738054 | CLEVIS PIN |
| ③ 31 | 3785824 | SPL BOLT | 42 | 3866575 | RETAINER |



CHEVROLET MOTOR DIVISION, GMC		UPC	DATE	SYM	REVISION RECORD	AUTH	DR	CK
CLUTCH LINKAGE		7	7-16-64	1	WAS 120382 L. WASHER	6292058		
			2	WAS 124925 NUT				
			3	WAS 121222 C. PIN			HB	
10000		REF. 4.						
DWG PREL 2-29-64 SB REF: Prel. C 4 L- 71402 L-		C 5.						
DATE REL 5-11-64 L- L- L-		SHEET 1						

1965-98