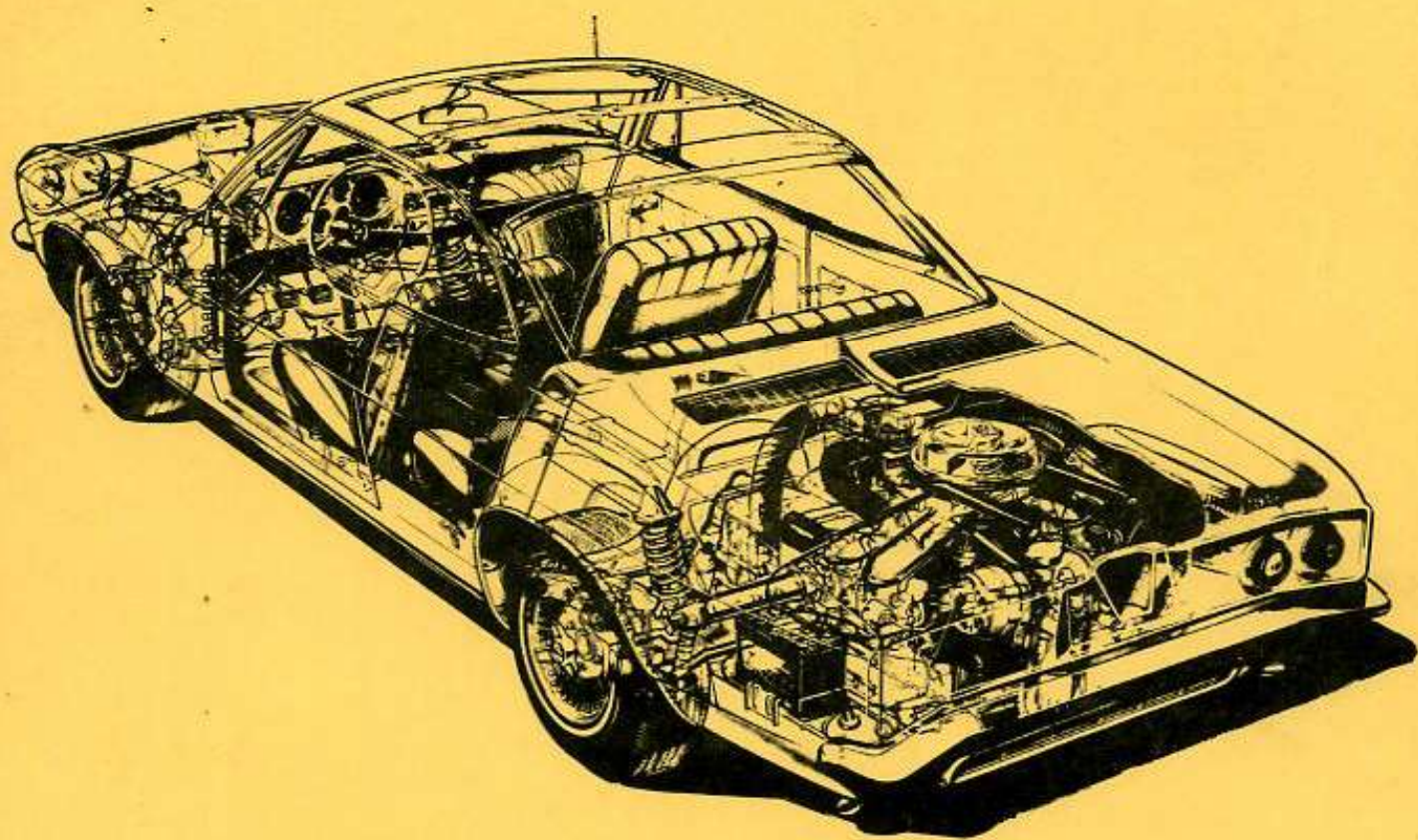


ASSEMBLY MANUAL



**1965
CORVAIR**

C7315



ASSEMBLY INSTRUCTIONS

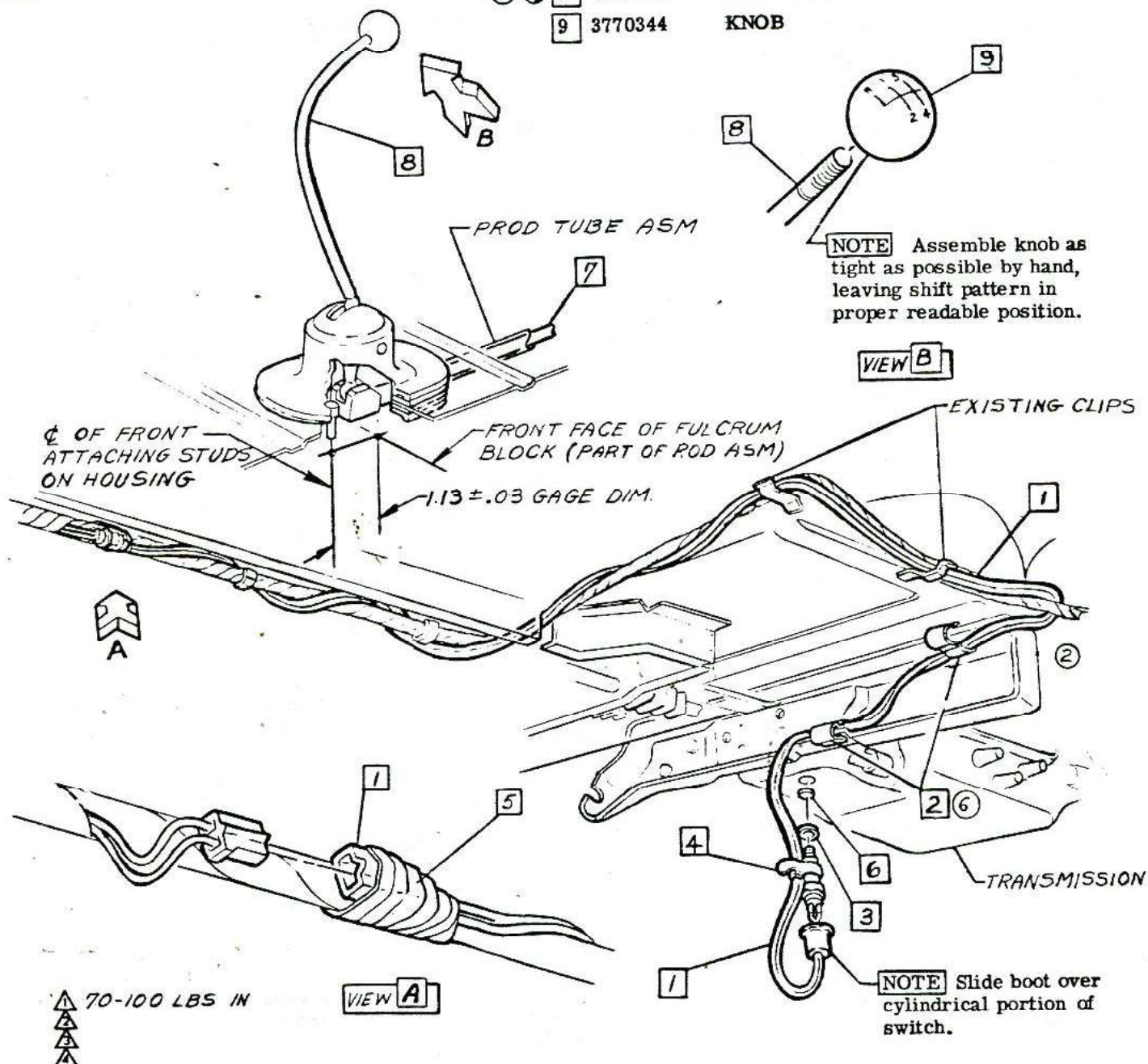
3862100

CORVAIR 10000 SERIES

- ③ ① 1 1993326 SWITCH ASM
10500-10700 & UPC Z01-Z13
- 2 3650598 CLIP
- 3 3833294 GASKET
- 4 4778650 STRAP

- 5 3724851
- 6 6256809
- ⑤ 7 3879762
- ④ ① 8 3872872
- 9 3770344

- TAPE 6 INCHES
Used to tape backing lamp switch wire to body wire harness.
- PLUG 10100
- ROD ASM
- LEVER ASM
- KNOB



CHEVROLET MOTOR DIVISION, GMC				UPC	DATE	SYM	REVISION RECORD	AUTH.	DR	CK
FOUR SPEED TRANSMISSION BACKING LAMP				M 20	7-17-64	1	REDRAWN & REDESIGNED	LS178	SE	DL
10000				2.	8-27-64	2	WIRE ROUTING REVISED	5503	SS	AF
DWG PREL 7-5-64 SD				3	8-22-64	3	WAS 1993302 SWITCH	60592	SB	
DATE REL 5-7-64				4		4	WAS 3859285 LEVER	66069		JP
REF: Prel. 2 L-73775 L-				5	1-15-65	5	WAS 3870450 ROD	68911	JT	CI
L- L- L-				6	4-23-65	6	CLIP DRAWING REVISED	70038	MT	CI
SHEET										

This document was created with Win2PDF available at <http://www.win2pdf.com>.
The unregistered version of Win2PDF is for evaluation or non-commercial use only.
This page will not be added after purchasing Win2PDF.