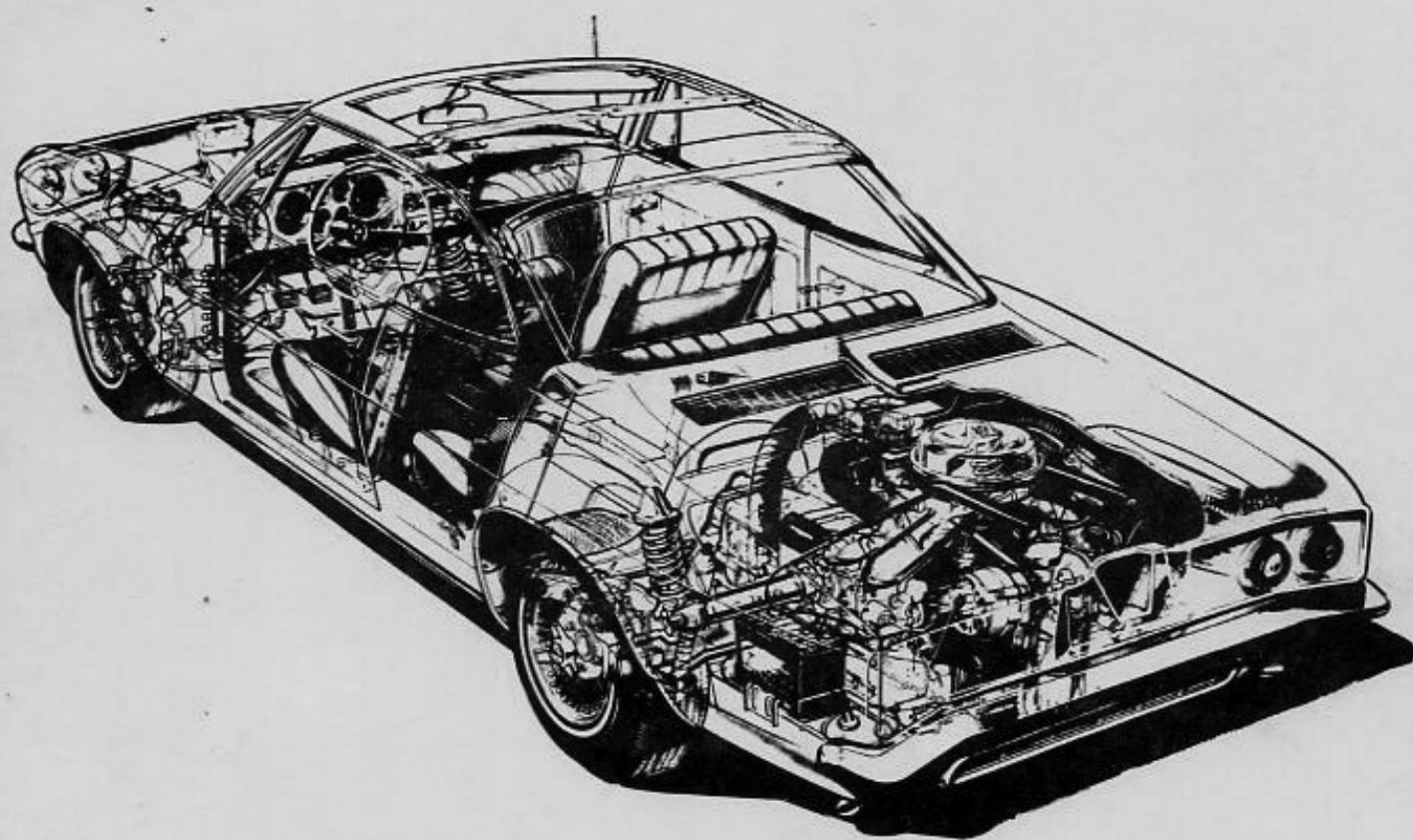


ASSEMBLY MANUAL



**1965
CORVAIR**

C7315

SECTION 12
ELECTRICAL



CHEVROLET

ASSEMBLY INSTRUCTIONS

3862100

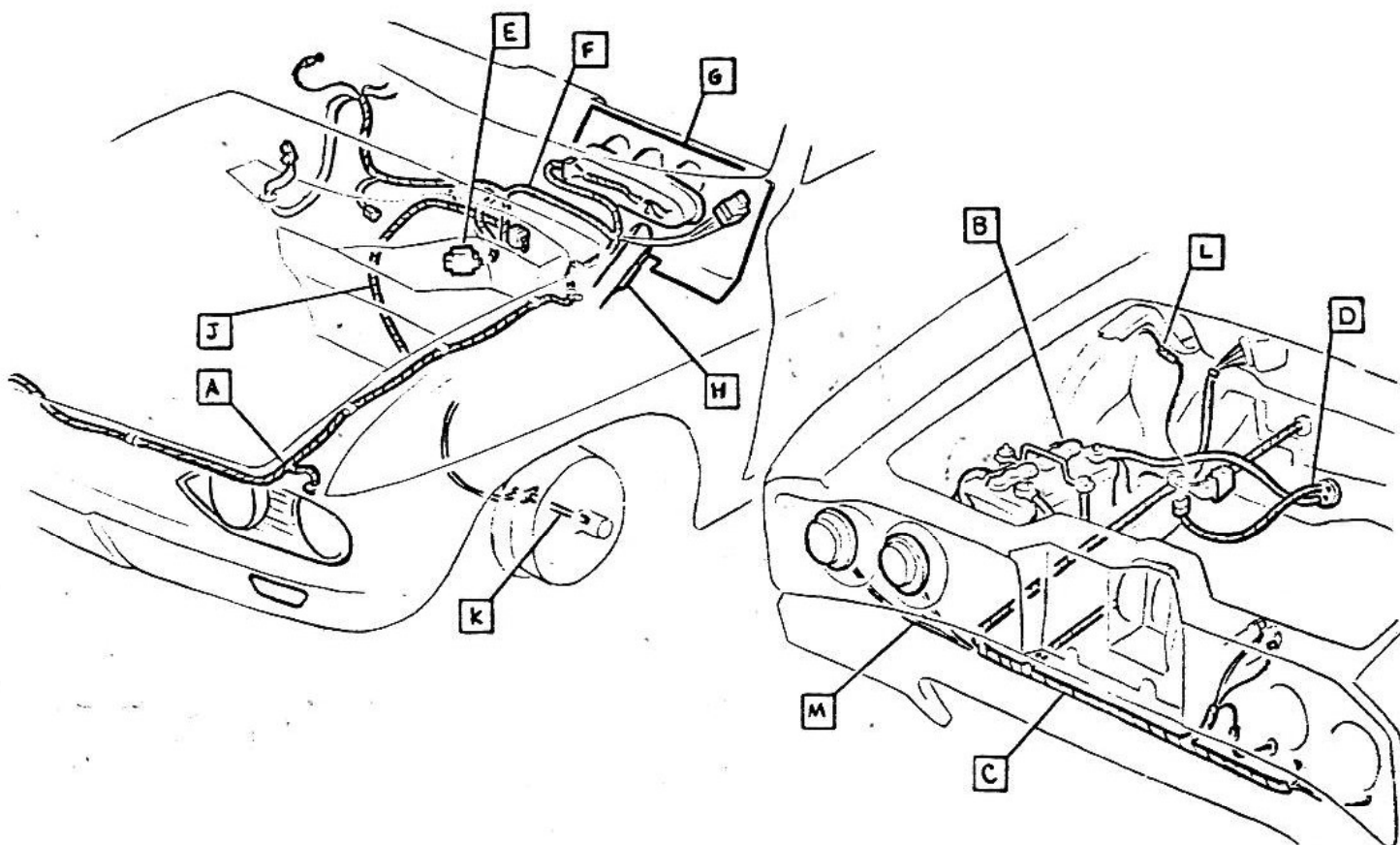
CORVAIR 10000 SERIES

SHEET	TITLE
A1.	CONTENTS
A	A2. FWD H/L & HORN RELAY WIRING
	A3. H/L, P/L & HORN
	A4. H/L AIMING
B	A5. BATTERY & CABLES
C	A6. ENGINE WIRING HARNESS
	A7. ENGINE WIRING HARNESS
	A8. OIL PRESS & TEMP SW-EXC 10700
	A9. 10700
D	A10. STARTER MOTOR WIRING
E	B1. FUSE PANEL ASM
F	B2. INST PNL WIRING HARNESS
	B3. INST PNL WIRING HARNESS

SHEET	TITLE
G	B4. INST CSTR WIRING-10700
	B5. 10100-500
	B6. INST CSTR INSTALLATION
	B7. CTSY LAMP WRG & COMPT LT. SW.
	B8. LIGHT SW & CIG LIGHTER
	B9. DIM & STOP LAMP SW WRG
H	C1. DIR SIGNAL SWITCH
J	C2. BODY HARNESS ROUTING
	C3. BODY HARNESS ROUTING
K	C4. SPEEDOMETER SHAFT
L	C5. RR LICENSE PLT LAMP WRG
M	C6. BACKING LAMP SW INSTAL
	C7. REAR END LIGHTING

NOT ILLUSTRATED ON THIS SHEET

- D1. WRG DIAGRAM-FRT END
D2. FUSE & INSTR PANEL
D3. INSTR CSTR & BODY HARNESS
D4. ENGINE & TAIL LAMPS



• CHEVROLET MOTOR DIVISION, GMC •				UPC	DATE	SYM	REVISION RECORD	AUTH.	DR	CK
CONTENTS-ELECTRICAL				12			2. REDRAWN & REVISED		TH	FF
10000				A1.						
DWG PREL 4-2	WO	REF: Proj. A1	L- 73250	L-						
DATE REL 4-2		L-	L-	L-						
				SHEET						



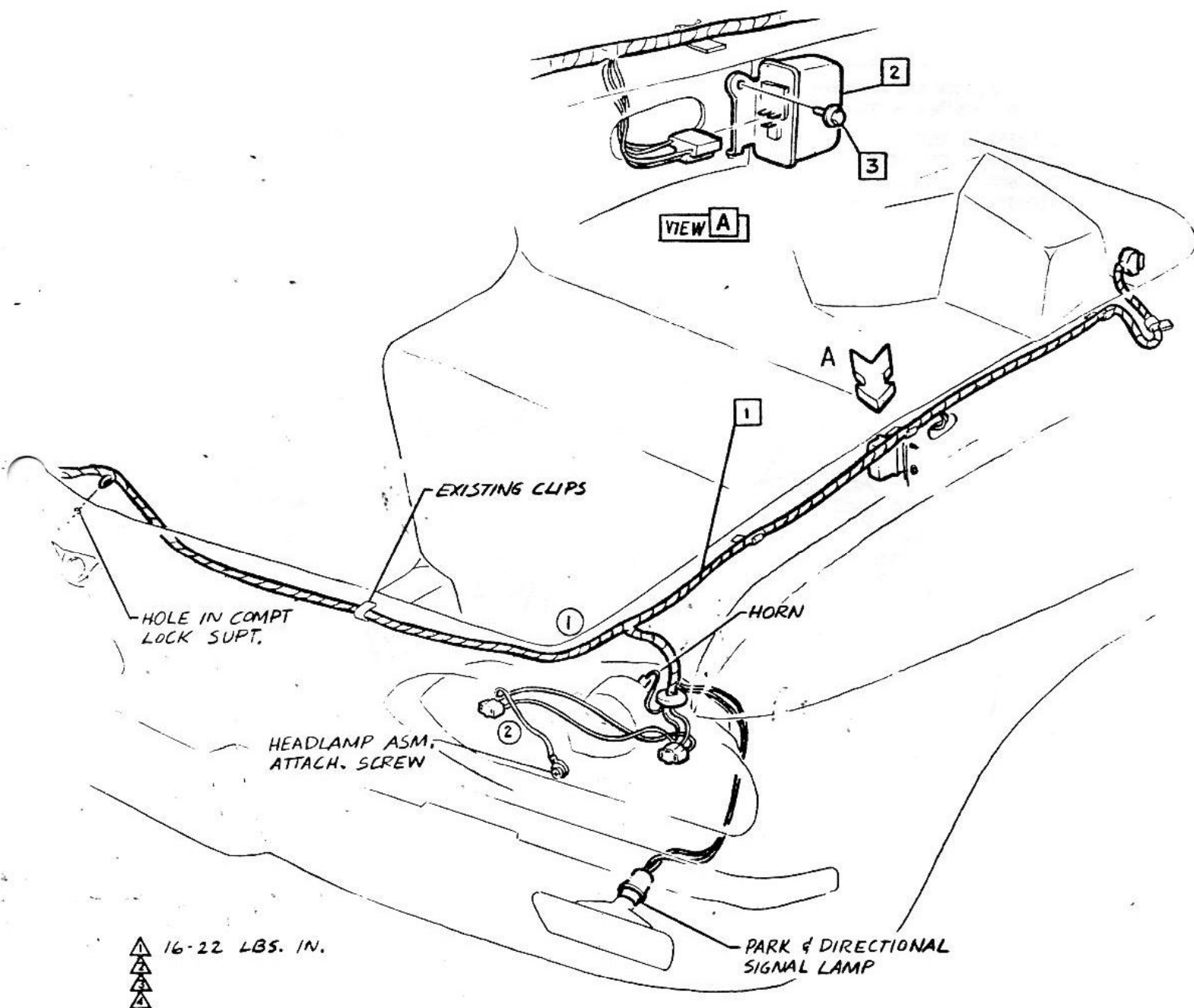
CHEVROLET

ASSEMBLY INSTRUCTIONS

3862100

CORVAIR 10000 SERIES

- ① 2989299 HARNESS ASM 10100
③ 2989360 10500-700
② 1115811 RELAY ASM
① ③ 9419400 SCREW



• CHEVROLET MOTOR DIVISION, GMC •				UPC	DATE	SYM	REVISION RECORD	AUTH	DR	CK
FORWARD HEADLAMP WIRING & HORN RELAY				12	7-2-64	1	EXISTING CLIP REMOVED	64369	WO	
						2	GROUND WIRE RELOCATED	—		QS
10000				A2.	8-5-64	3	WAS 2988021-2988022	65614	WO	DP
DWG PREL 3-20-64 WJO REF: Prel. A4 L-73258 L-				SHEET						
DATE REL 3-20 L- L- L-										

1965-121



CHEVROLET

ASSEMBLY INSTRUCTION

3862100

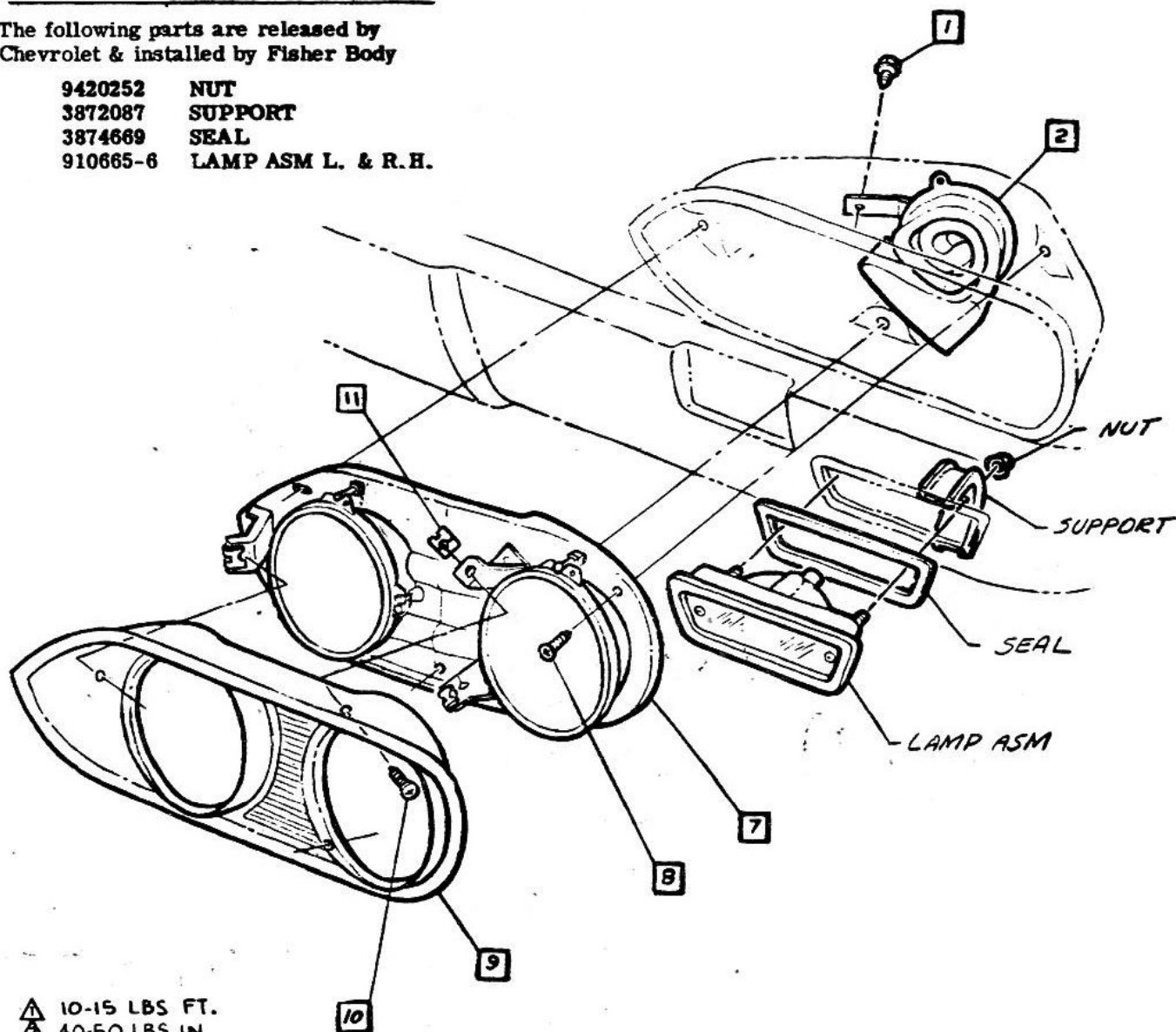
CORVAIR 10000 SERIE

- 1 3866066 SCREW ASM
- 2 9000539 HORN ASM L. H. SIDE
9000540 (10500-700) R. H. SIDE
- 3
- 4
- 5

- 6
- 7 5957465-6 LAMP ASM HEAD L. & R. H.
- 8 9422724 SCREW
- 9 3850869-70 BEZEL L. & R. H.
- 10 3866852 SCREW
- 11 9422242 NUT-J

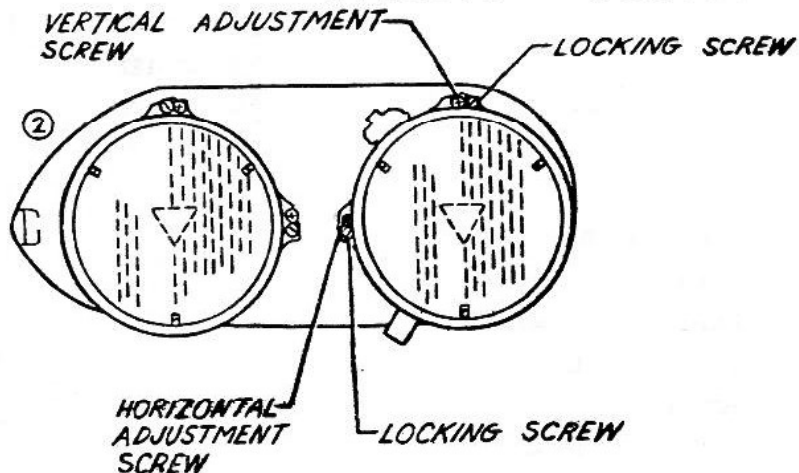
The following parts are released by
Chevrolet & installed by Fisher Body

- 9420252 NUT
- 3872087 SUPPORT
- 3874669 SEAL
- 910665-6 LAMP ASM L. & R. H.



- 10-15 LBS FT.
- 40-50 LBS IN.
- 25-35 LBS IN.
- 3-7 LBS IN.

CHEVROLET MOTOR DIVISION, GMC				UPC	DATE	SYM	REVISION RECORD	AUTH	DR	CK
HEADLAMP, PARKING LAMP & HORN				12	10-23-64	6	REDRAWN & REDESIGNED 66536	67246	TH	DF
					12-30-64	7	WAS 3833187 SCREW	66457	BR	CI
					1-19-65	8	WAS 3860140 NUT	15365	BR	CI
10000				A3.						
DWG PREL. 3-23 WO REF: Prel. A5 L-73488 L-										
DATE REL. 5-12 L- L- L-				SHEET						



HEADLAMP AIMING

- Horizontal -

"When using a mechanical" type aimer incorporating a split image or equivalent, the aiming plane horizontal setting is $0^\circ \pm .40^\circ$. R.H. and L.H. aimers calibrated to read 0° when mounted on individual checking planes angled $.20^\circ$ to right for L.D. vehicles; $.20^\circ$ left for R.D. vehicles.

- Vertical -

①

"The aiming plane vertical setting is $0^\circ \pm .20^\circ$ using the same mechanical aimer incorporating a spirit level or equivalent and calibrated to read 0° when aiming plane is perpendicular to level.

"Vehicle to be a curb minus gas weight and on a level area of transit accuracy for all four wheels".




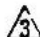


• CHEVROLET MOTOR DIVISION, GMC •				UPC	DATE	SYM	REVISION RECORD	AUTH.	DR	CK
HEADLAMP AIMING				12	3-10-64	1	WAS $0^\circ \pm .40^\circ$	—	TH	
						2	DRAWING REVISED	66305		DF
10000				A4.						
DWG PREL. 3-19 N.O. REF: Prel. A3 L- - L-										
DATE REL. 3-19 L- L- L-				<input checked="" type="checkbox"/> SHEET 1						

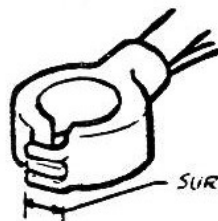
ASSEMBLY INSTRUCTIONS

3862100

CORVAIR 10000 SERIES

- | | | | |
|---|-----------|----------------|------------------------|
|  | 1 | 120376 | NUT |
| | 2 | 446363 | P. WASHER |
| | 3 | 3862900 | RETAINER ASM |
| | 4 | 3695918 | BOLT |
|  | 5 | 3848488 | BOLT |
| | 6 | 378082 | SPL WASHER |
| | 7 | 3848472 | RETAINER |
| (5) | 8 | 2987281 | CABLE ASM (POS) |
| (10) | 9 | 3864922 | NUT-SPECIAL |
|  | 10 | 6257700 | SCREW |
| | 11 | 2987251 | CABLE ASM (NEG) |
| | 12 | 174915 | L. WASHER |
|  | 13 | 9420415 | SCREW |

- | | | |
|-----------|---------|---------------------|
| 14 | 3874560 | GROMMET |
| 15 | 3854122 | TRAY-BATTERY |
| 16 | 3862902 | HOSE-FRT |
| 17 | 3862903 | HOSE-REAR |
| 18 | 1980007 | BATTERY |

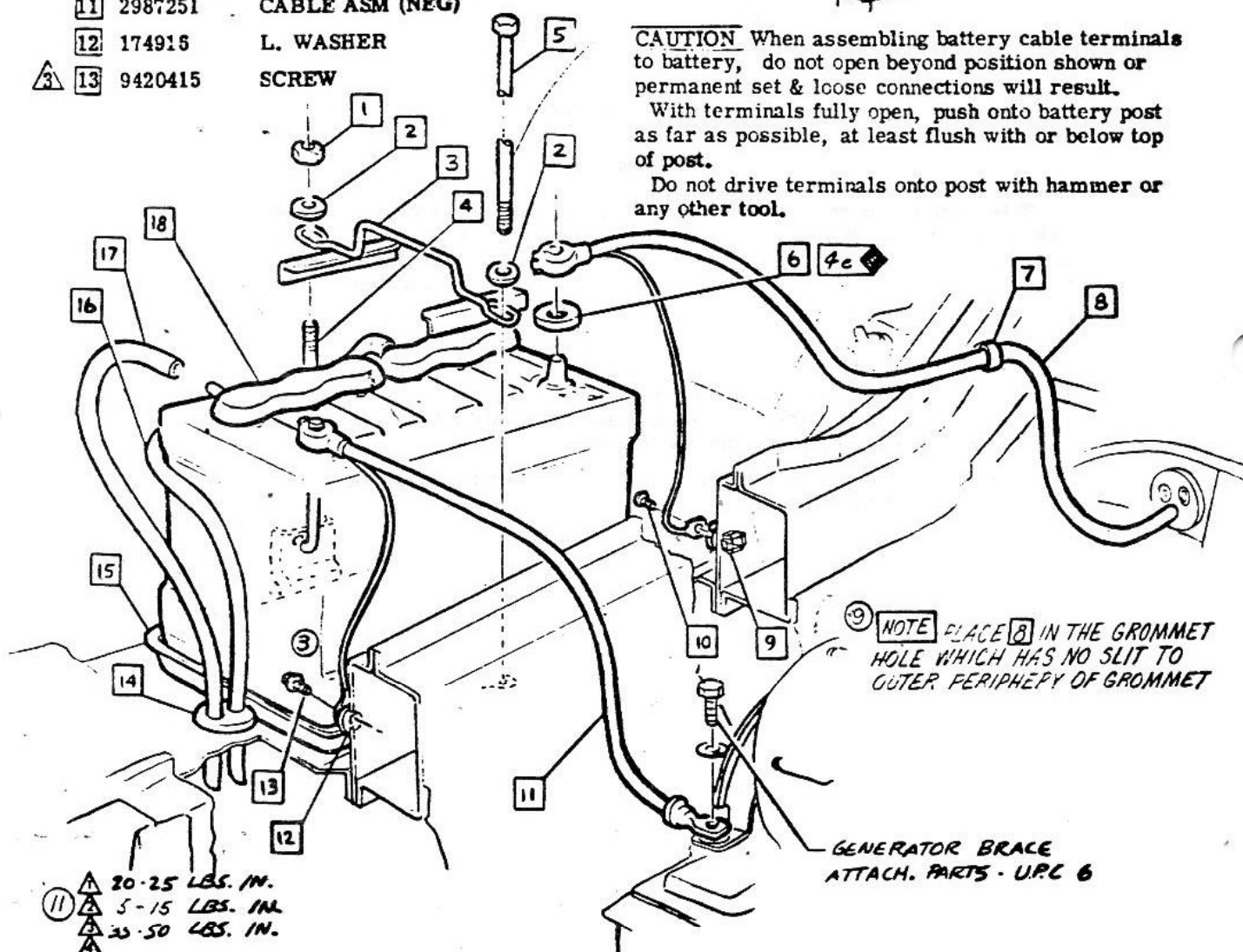


SURFACES FLUSH

CAUTION When assembling battery cable terminals to battery, do not open beyond position shown or permanent set & loose connections will result.

With terminals fully open, push onto battery post as far as possible, at least flush with or below top of post.

Do not drive terminals onto post with hammer or any other tool.



NOTE PLACE 8 IN THE GROMMET HOLE WHICH HAS NO SLIT TO OUTER PERIPHERY OF GROMMET

- GENERATOR BRACE
ATTACH. PARTS - U.P.C 6

- 1 20-25 LBS. IN.
 2 5-15 LBS. IN.
 3 30-50 LBS. IN.
 4

CHEVROLET MOTOR DIVISION, GMC				UPC		DATE		SYM		REVISION RECORD		AUTH.		DR		CK	
BATTERY & CABLES				12		10-20-65		8		WAS 2367264 CABLE		66037		BR			
								9		NOTE ADDED							
10000				A5.		4-23-65		10		WAS 3862668 NOTE DWS. REVISED		70143		KM			
								11		TORQUE (2) WAS 10-20 LBS. IN.							
DWG TEL 3-17-64				WO.		REF: Prod. A2		L-73258		L-65030							
DATE-REL 3-17						L-		L-		L-							
				SHEET		X											



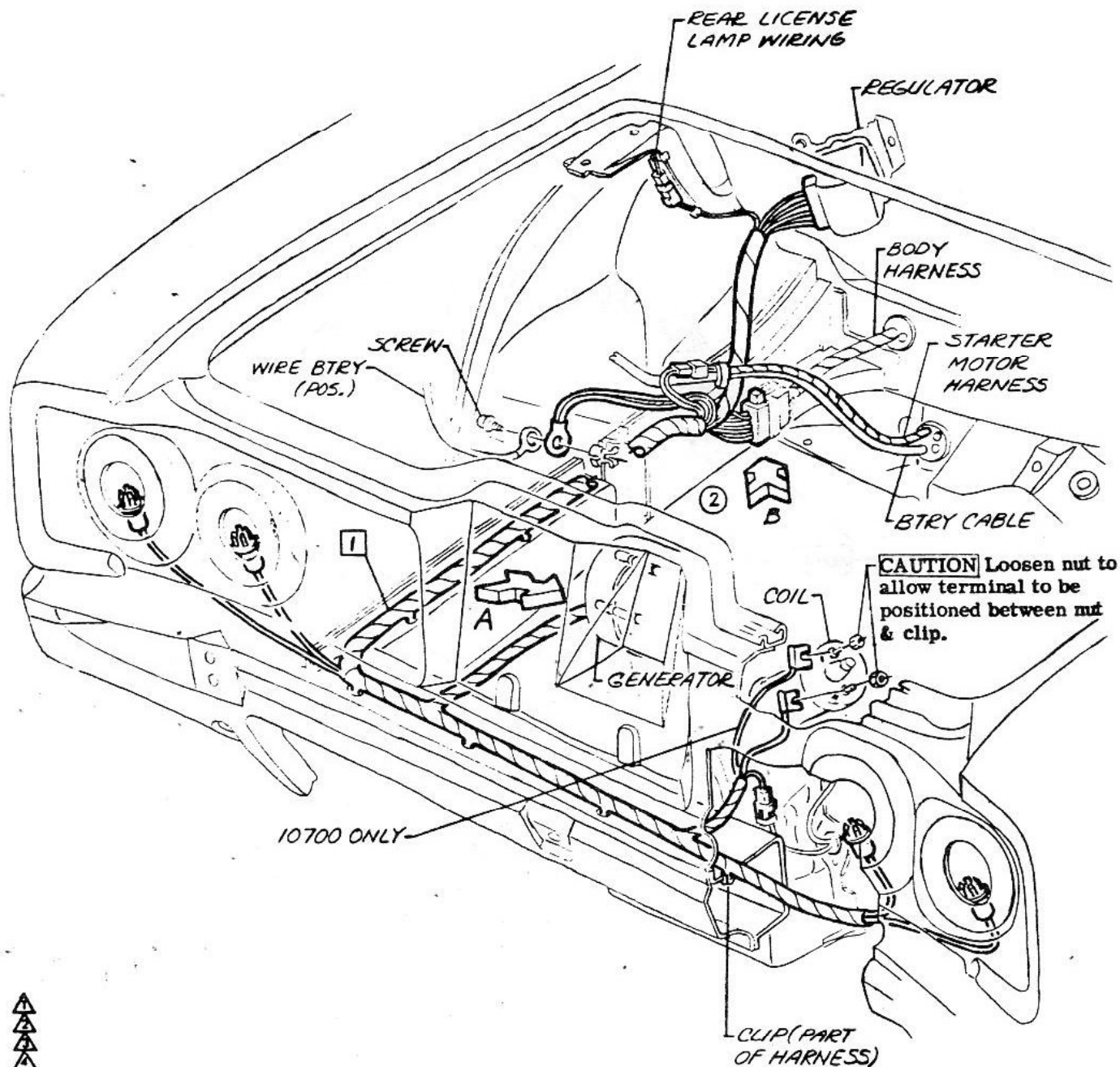
CHEVROLET

ASSEMBLY INSTRUCTIONS

3862100

CORVAIR 10000 SERIES

- ① 1 2989370 HARNESS ASM-ENG WIRING (10100)
2989368 (10500)
2989369 (10700)



• CHEVROLET MOTOR DIVISION, GMC •				UPC	DATE	SYM	REVISION RECORD	AUTH.	DR	CK
ENGINE WIRING HARNESS				12	8-5-64	1	WAS 2986033-2986034-			
							2986035	65916	WO	DP
10000				REF A7 A6.	10-8-64	2	DRAWING REVISED	15907	TH	DF
DWG PREL. 3-25				REF: Prel. A7 L-73258 L-						
DATE REL. 3-25										
NO										
L- L- L-										
				<input checked="" type="checkbox"/> SHEET						



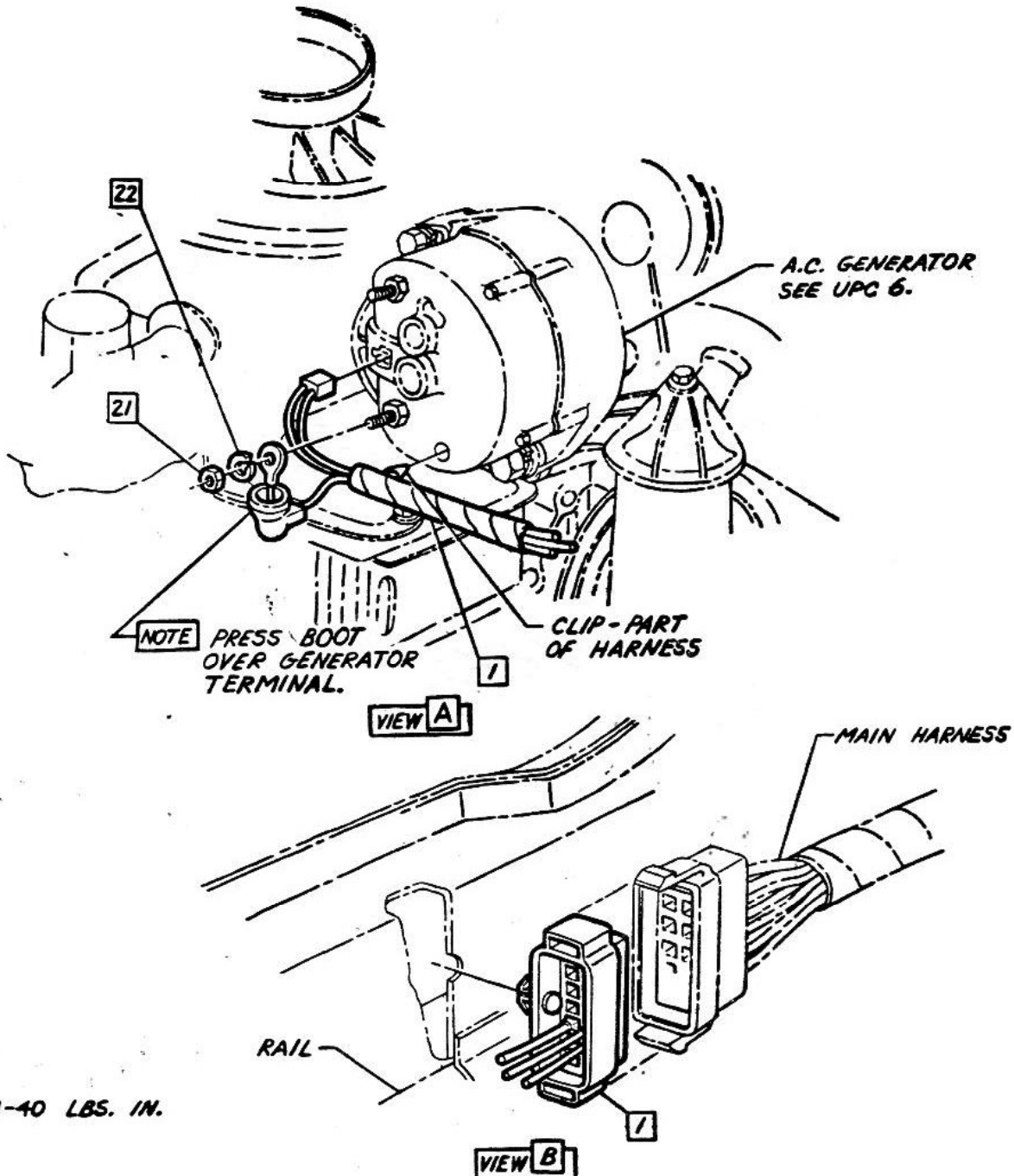
CHEVROLET

ASSEMBLY INSTRUCTIONS

3862100

CORVAIR 10000 SERIES

- ⚠ 21 121743 NUT
22 121744 L. WASHER



CHEVROLET MOTOR DIVISION, GMC		UPC	DATE	SYM	REVISION RECORD	AUTH	DR	CK
ENGINE WIRING HARNESS		12						
10000		REF A6						
DWG PREL. 3-31 W.Q. REF: Prel. A8 L-73258 L-		A7.						
DATE REL. 3-31		SHEET						



CHEVROLET

ASSEMBLY INSTRUCTIONS

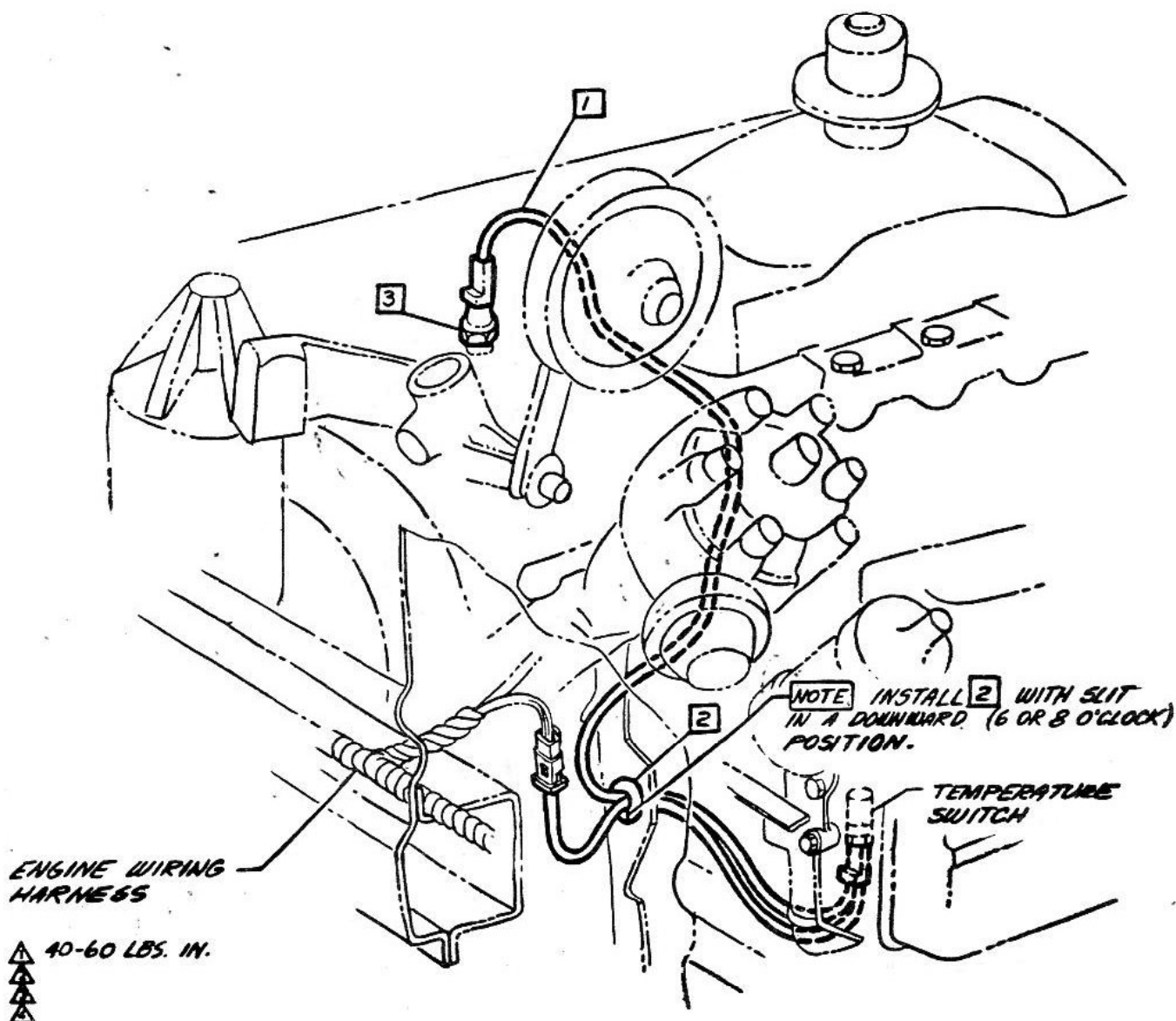
3862100

CORVAIR 10000 SERIES

- 1 2988036 WIRING ASM (EXC 10700)
2 3708179 GROMMET

⚠ 3 3818783

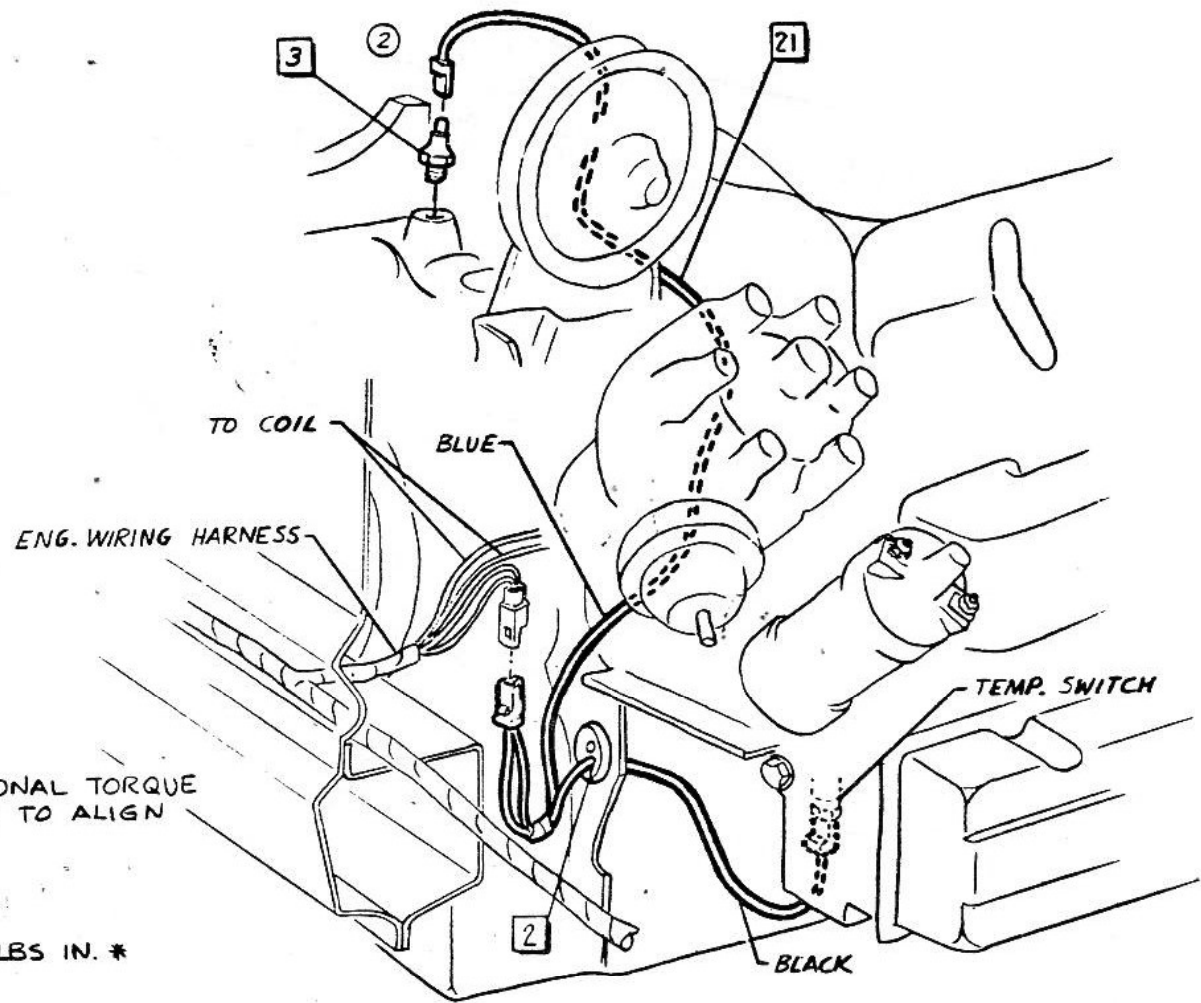
SWITCH ASM -OIL PRESSURE



CHEVROLET MOTOR DIVISION, GMC				UPC	DATE	SYM	REVISION RECORD	AUTH.	DR.	CK.
OIL PRESSURE & ENGINE TEMPERATURE SWITCH WIRING				12						
10000				REF A9						
				A8.						
DWG PREL 3-30				W O	REF: Proj. A9	L-	-	L-		
DATE REL 3-30					L-	L-	L-			
				ⓧ SHEET						

21 2988037 WIRE ASM

①



* PLUS ADDITIONAL TORQUE NECESSARY TO ALIGN TEE

▲
▲ 40-60 LBS IN. *
▲

CHEVROLET MOTOR DIVISION, GMC				UPC	DATE	SYM	REVISION RECORD	AUTH.	DR.	CK.
OIL PRESSURE & ENGINE TEMPERATURE SW. WIRING				12	9-29-64	1	3828680 TEE & (40-60 LBS IN) REMOVED	66467	TH	
						2	DRAWING REVISED			DF
10700				REF A8						
A9										
DWG PREL 3-30-64 W.O. REF: Prel. A10 L- - L-				SHEET						
DATE REL. 3-30 L- L- L-										



CHEVROLET

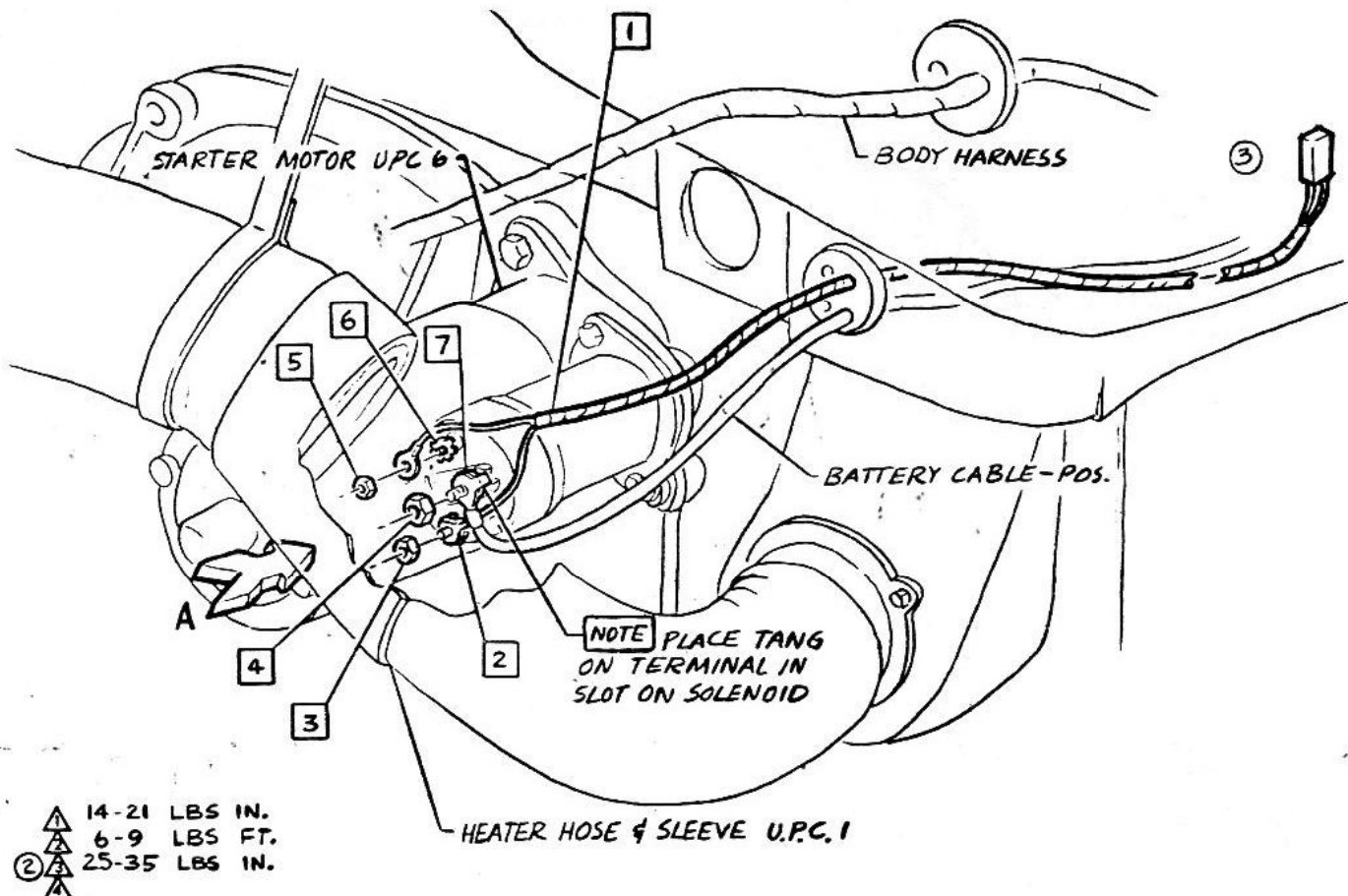
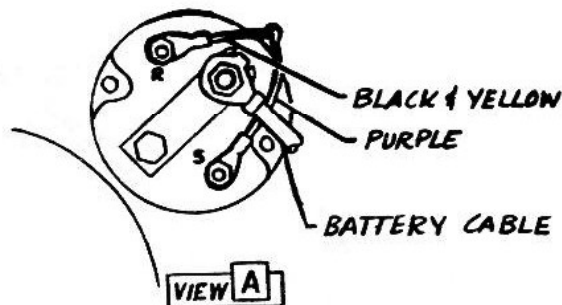
ASSEMBLY INSTRUCTIONS

3862100

CORVAIR 10000 SERIES

- 1 2988038 WIRE ASM
- 2 121752 L. WASHER
- ① 3 120622 NUT
- ② 4 124829 NUT
- ③ 5 120614 NUT

- 6 138479 L. WASHER
- ① 7 138489 L. WASHER



* CHEVROLET MOTOR DIVISION, GMC *				UPC	DATE	SYM	REVISION RECORD	AUTH	DR	CK
STARTER MOTOR WIRE ASM				12	7-7-64	1	WAS 120-02	64798	WO	DP
					8-17-64	2	TORQUE (3) WAS 23-35 LBS. IN.	64060	WO	DF
10000				A10.	10-23-64	3	DRAWING REVISED	15907	TH	DF
DWG PREL. 2-24-64 WD REF: Prel. A6 L-73258 L- DATE REL. 3-24 L- L- L-				X SHEET						

1965-129

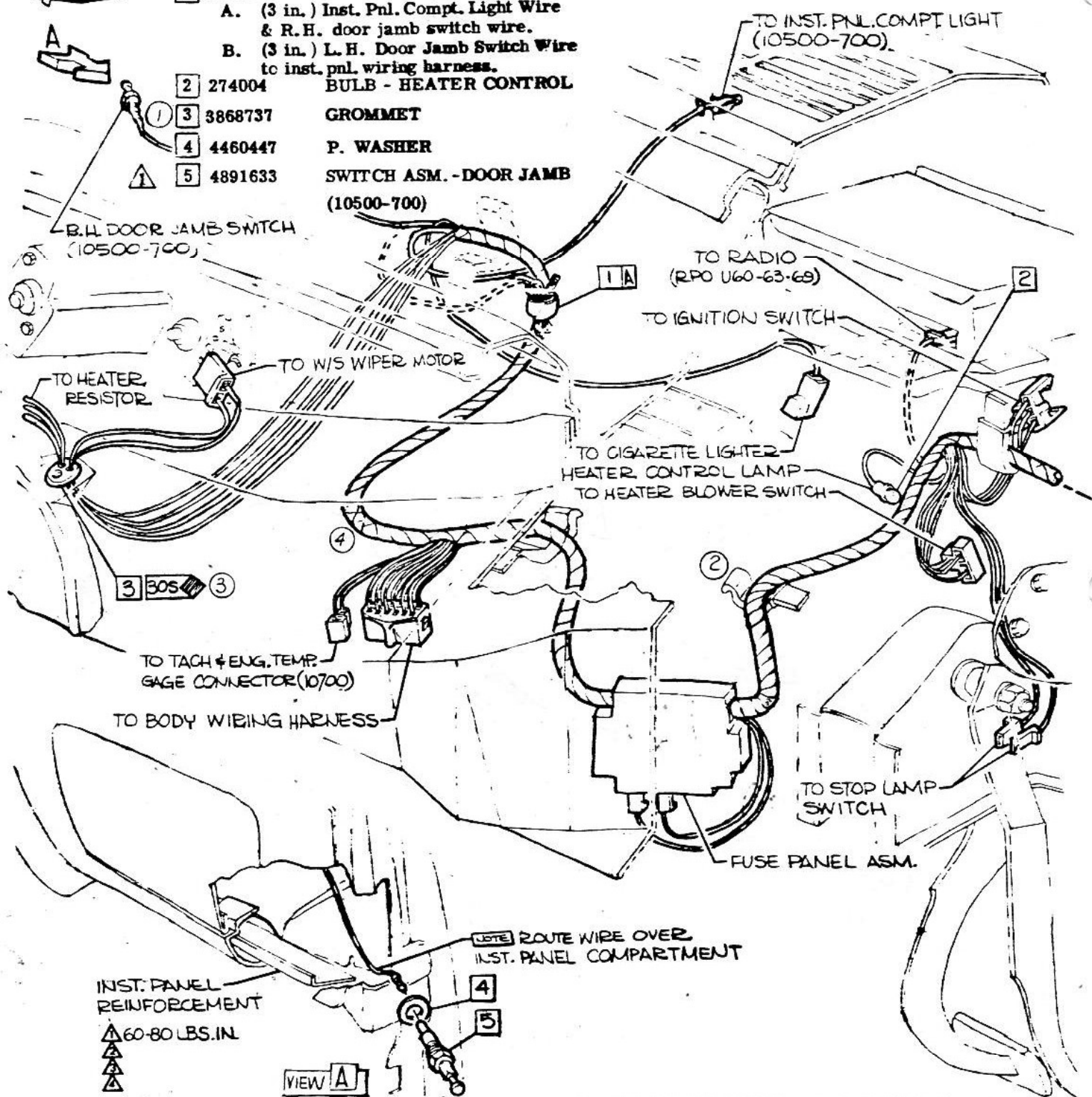


ASSEMBLY INSTRUCTIONS

1 3747298 TAPE (6 IN.)(10100) 3862100 CORVAIR 10000 SERIES

- A. (3 in.) Inst. Pnl. Compt. Light Wire & R.H. door jamb switch wire.
B. (3 in.) L.H. Door Jamb Switch Wire to inst. pnl. wiring harness.

- 2 274004 BULB - HEATER CONTROL
3 3868737 GROMMET
4 4460447 P. WASHER
5 4891633 SWITCH ASM. - DOOR JAMB (10500-700)



* CHEVROLET MOTOR DIVISION, GMC *				UPC	DATE	SYM	REVISION RECORD	AUTH.	DR	CK
INSTRUMENT PANEL WIRING HARNESS				12	6-25-64	1	INS 336-22 GROMMET	64512	PR	DF
					9-16-64	2	CLIP DRAWING REVISED	15863	PR	DF
10000				REF B 3	11-9-64	3	SYMBOL "30S" ADDED	5858	PR	DF
					3-11-65	4	CLIP DWG. REMOVED	15980	MB	CI
B2.				X SHEET 1						
DWG PREL 2-27										
DATE REL 5-18										
REF: Prel. B3 L-73258 L-65003										
L- L- L-										



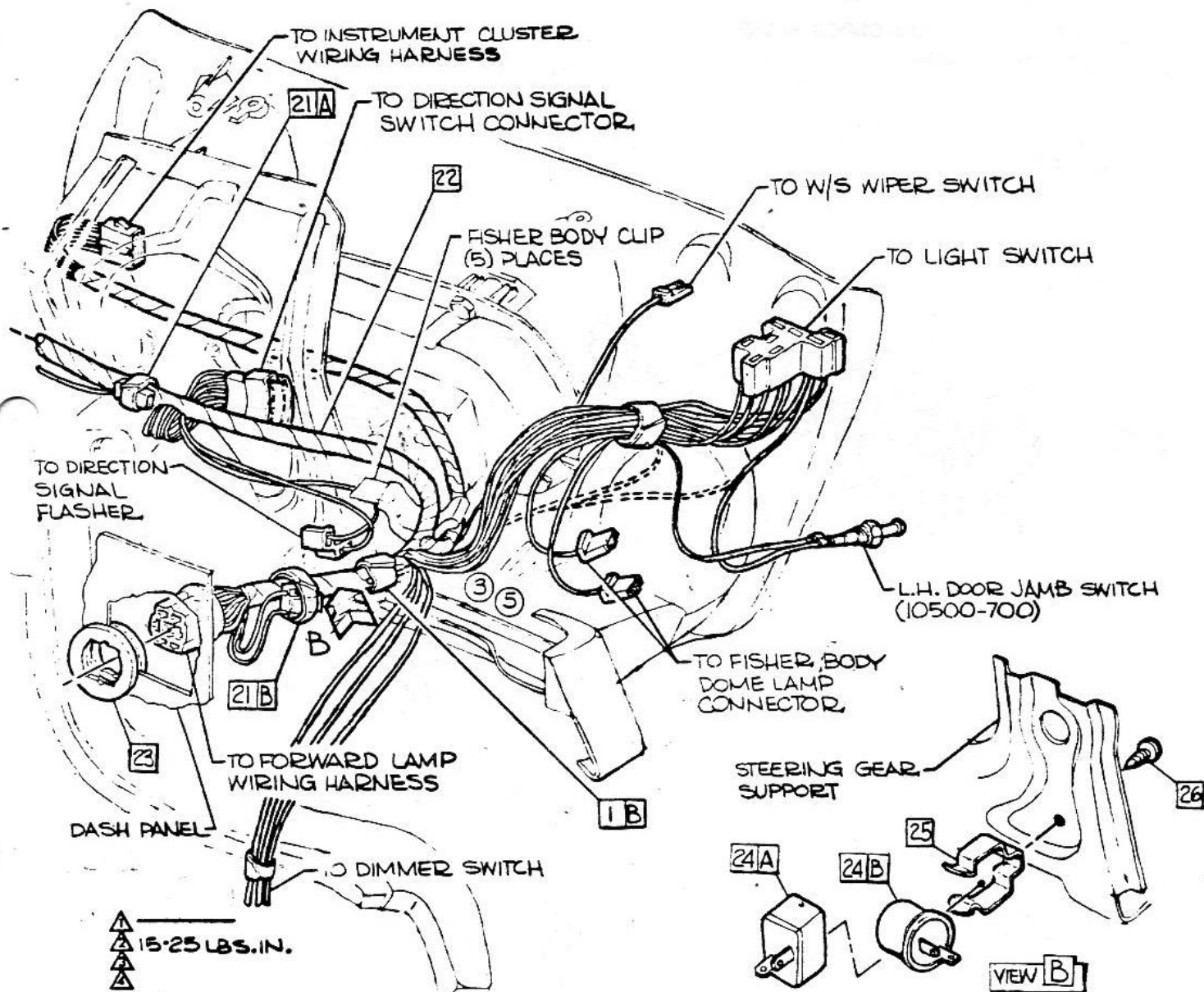
CHEVROLET

ASSEMBLY INSTRUCTIONS

3862100

CORVAIR 10000 SERIES

- 21 3724851 TAPE
 A. (6 in.) RADIO LEAD TO INST. PANEL WIRING HARNESS.
 B. (4 in.) TEMP. WARNING BUZZER TO INST. PNL. WIRING HARN. (10700).
 22 2989240 HARNESS ASM. (10100-500)
 2989241 (10700)
 23 2962568 GROMMET
 24 A. 383638 FLASHER ASM.
 B. 383639 OPT.
 25 3866440 CLIP
 26 9419328 SCREW



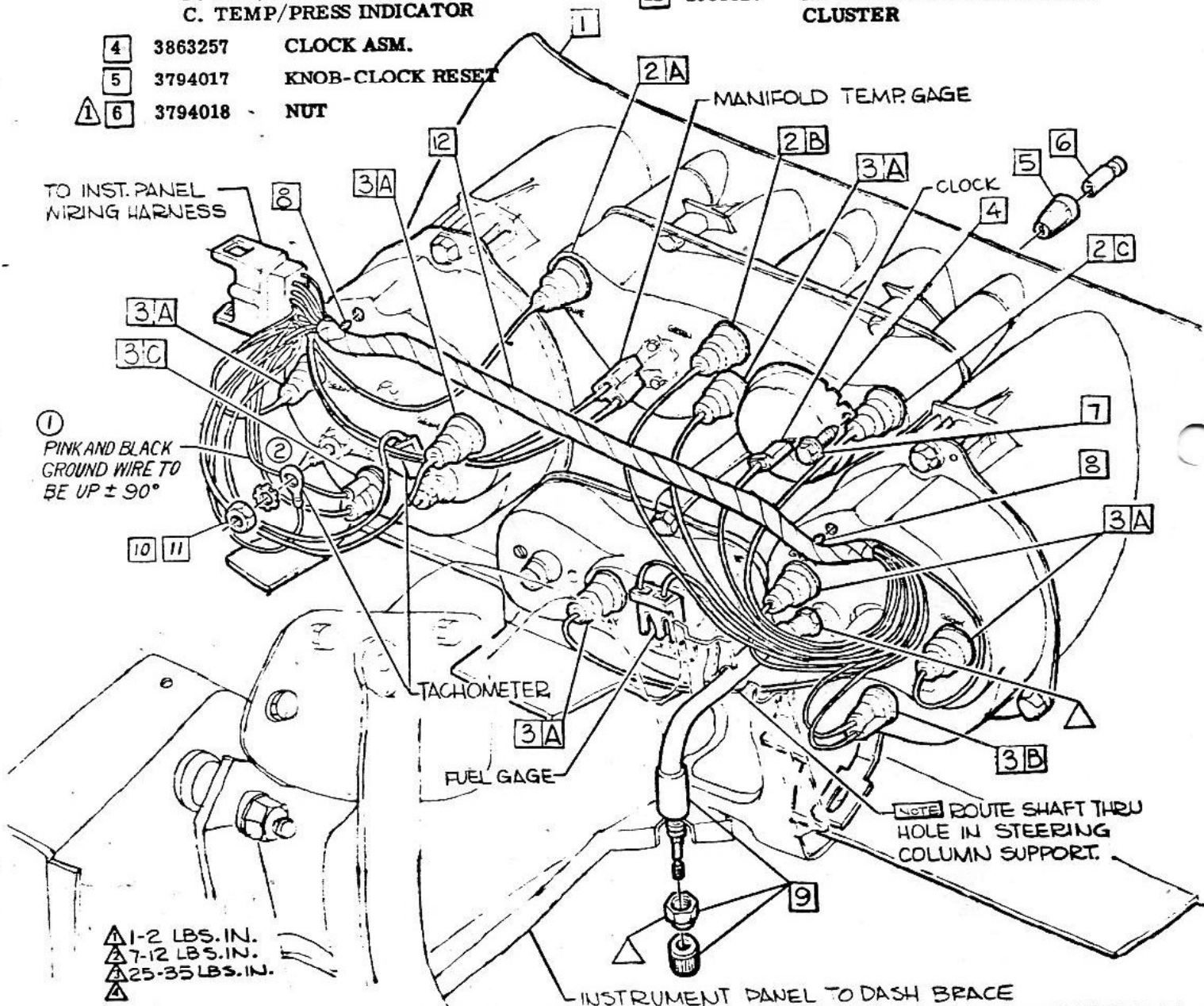
CHEVROLET MOTOR DIVISION, GMC				UPC	DATE	SYM	REVISION RECORD	AUTH.	DR	CK
INSTRUMENT PANEL WIRING HARNESS				12	6-25-64	1	11-25-64 23-62905025 HARNESS	64607	PR	
10000				REF B 2		2	3866906 WAS 383638	64029	DF	
DWG PREL. 2-27 PHR REF: Prel. B4 L-73258 L-65003				B3.	8-17-64	3	HARNESS BREAKOUT REVISED	66060	PR	DF
DATE REL 5-18 L- L- L-				SHEET 1	10-5-64	4	383638 & 383639 WAS 3866906 & 3866806	66955	PR	
						5	LIGHT SWITCH BREAKOUT REVISED	66467	DF	

1965-131

+

- 1 6455028 CLUSTER
- 2 274004 BULB
 - A. R.H. DIRECTION INDICATOR
 - B. HI-BEAM INDICATOR
 - C. L.H. DIRECTION INDICATOR
- 3 9417863 BULB
 - A. INSTRUMENT CLUSTER
 - B. GEN/FAN INDICATOR
 - C. TEMP/PRESS INDICATOR
- 4 3863257 CLOCK ASM.
- 5 3794017 KNOB-CLOCK RESET
- 6 3794018 NUT

- 7 9419699 SCREW
- 8 CLIP (PART OF HARNESS)-PLUG INTO INSTRUMENT CLUSTER (2) PLACES.
- 9 1586301 SHAFT ASM.-TRIP ODOMETER
- 10 120614 NUT
- 11 138479 L. WASHER
- 12 2988027 HARNESS ASM.-INSTRUMENT CLUSTER



CHEVROLET MOTOR DIVISION, GMC				UPC	DATE	SYM	REVISION RECORD	AUTH.	DR	CK
INSTRUMENT CLUSTER WIRING				12	2-23-65	1	"WIPE" NOTE - ADDED	65473	J.T.	
10700						2	"SOCKET" DRAWING REVISED			CI
DWG PREL 3-2 PHR REF: Prel. B6 L-65002L-73258				B4.						
DATE REL 5-13 L-65017 L-74737 L-				<input checked="" type="checkbox"/> SHEET						



CHEVROLET

ASSEMBLY INSTRUCTIONS

3862100

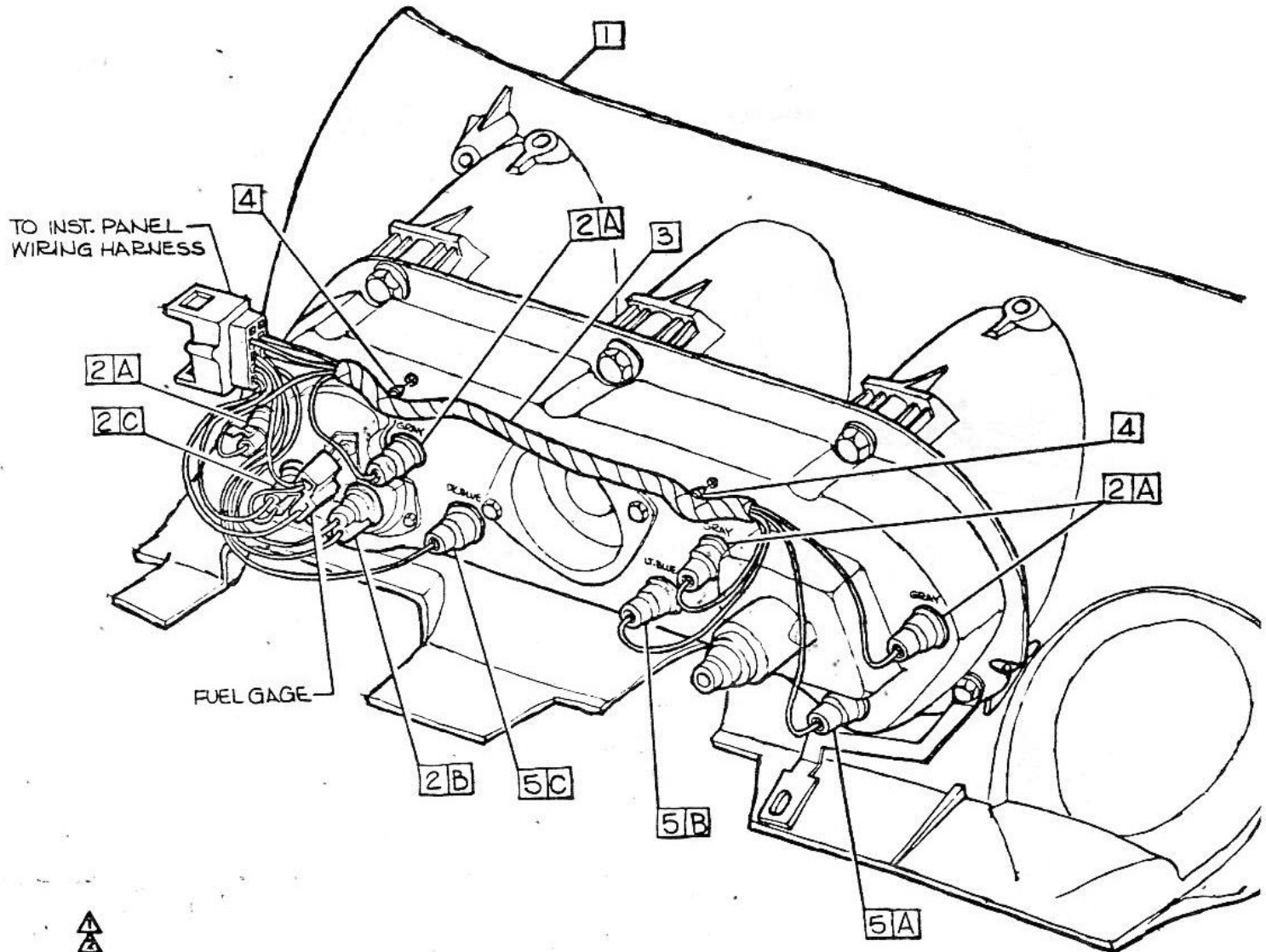
CORVAIR 10000 SERIES

1 6455114 CLUSTER ASM (10100)
6455110 (10500)

2 9417863 BULB
A. Instrument cluster
B. Gen/Fan indicator
C. Temp/Press. indicator

3 2988026 HARNESS ASM-INST CLUSTER
4 CLIP-(Part of Harness)-Plug into instrument cluster (2) places.

5 274004 BULB
A. Hi-beam indicator
B. L.H. direction indicator
C. R.H. direction indicator.

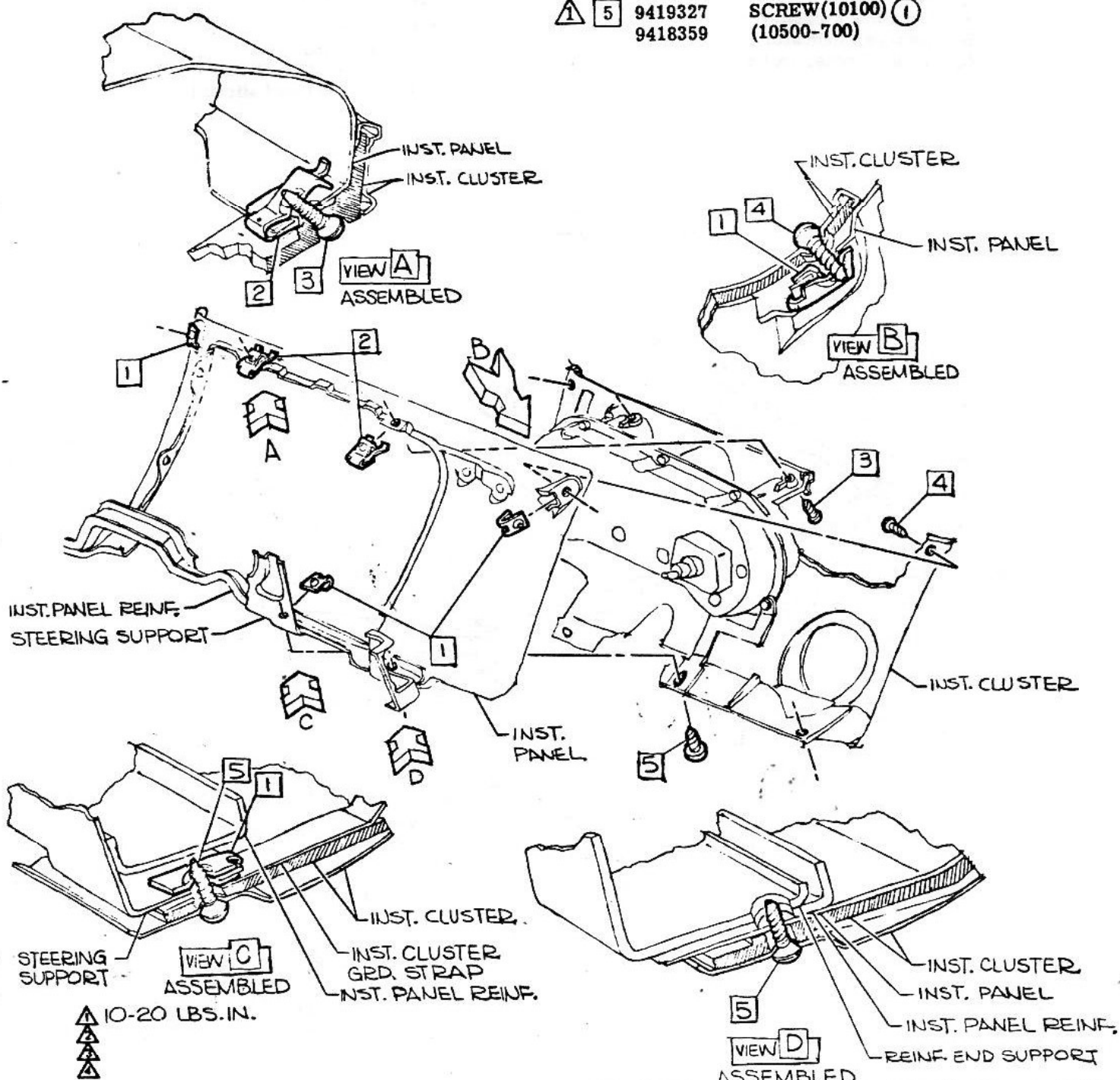


CHEVROLET MOTOR DIVISION, GMC				UPC	DATE	SYM	REVISION RECORD		AUTH	DR	CK
INSTRUMENT CLUSTER WIRING				12							
10100-500				B5.							
DWG PREL. 3-5	PHR	REF: Prel. B7	L-73258	L-65017							
DATE REL. 2-5		L-	L-	L-	<input type="checkbox"/> SHEET	<input checked="" type="checkbox"/> X					

1965-133

- 1 3860140 NUT
2 3861835 NUT

- ① 3 3849634 SCREW
② ① 4 3839187 SCREW (10100-500)
3849634 (10700)
① 5 9419327 SCREW(10100) ①
9418359 (10500-700)



CHEVROLET MOTOR DIVISION, GMC				UPC	DATE	SYM	REVISION RECORD	AUTH.	DR	CK
INSTRUMENT CLUSTER INSTALLATION				12	6-25-64	1	9419327 (10100) WAS 9415404	64213	FR	
10000				B6.			9418359 ADDED			DF
DWG PREL 3-9 PHR REF: Prel. B9 L-65017 L-				12	7-10-64	2	(10100-500) & 3849634 (10700)	65238	PR	DP
DATE REL 5-13 L- L- L-				12			ADDED			
X SHEET										



ASSEMBLY INSTRUCTIONS

3862100

CORVAIR 10000 SERIES

- | | | | | |
|-----|-------------------------------|-------|---------|----------------------|
| 1 | INST PANEL HARNESS ASM | 6 | 9417863 | BULB |
| ① 2 | 2989245 WIRE ASM 10000 (CONV) | ③ ② 7 | 3870209 | SWITCH ASM-COMPT LGT |
| 3 | 4442679 SUPPORT-LAMP | | 3859328 | OPT. |
| 4 | 193125 BULB | | | |
| ① 5 | 9418359 SCREW | | | |

BLACK & ORANGE STRIPE

NOTE Route Black/Orange stripe wire thru notch in corner of instrument pnl compartment asm.

INST PNL COMPT ASM

BLACK & WHITE STRIPE

NOTE Terminal must be assembled to switch before bulb can be properly installed.

VIEW B

LH SIDE: HOLE THRU INST. PNL. REINF, INST. PNL, CLUSTER SUPT. & CLUSTER TRIM.
RH SIDE: HOLE THRU INST. PNL. REINF, INST. PNL & INST. PNL TRIM

VIEW A
10000 (CONV)

4 FISHER BODY CLIP (5) PLACES



21.00 (REF)

21.00 (REF)

CAR

10-15 LBS IN.



CHEVROLET MOTOR DIVISION, GMC		UPC	DATE	SYM	REVISION RECORD	AUTH	DR	CK
COURTESY LAMP WIRING & INST. PNL. COMPARTMENT LIGHT SWITCH		12	6-25-64	1	WAS 2525360 N REASM.	64607	PR	DF
10500-700		B7.	7-10-64	2	3780209 WAS 3859327	65297	PR	DF
DWG PREL 3-4 PR/FR REF: Prel. B8 L-73258L-		SHEET	10-13-64	3	3870209 WAS 3780209	65297	PR	DF
DATE PREL 5-13			3-11-65	4	(5) PLACES WAS (6) & CLIP	15980	MB	
					DWG. REVISED			CI



CHEVROLET

ASSEMBLY INSTRUCTIONS

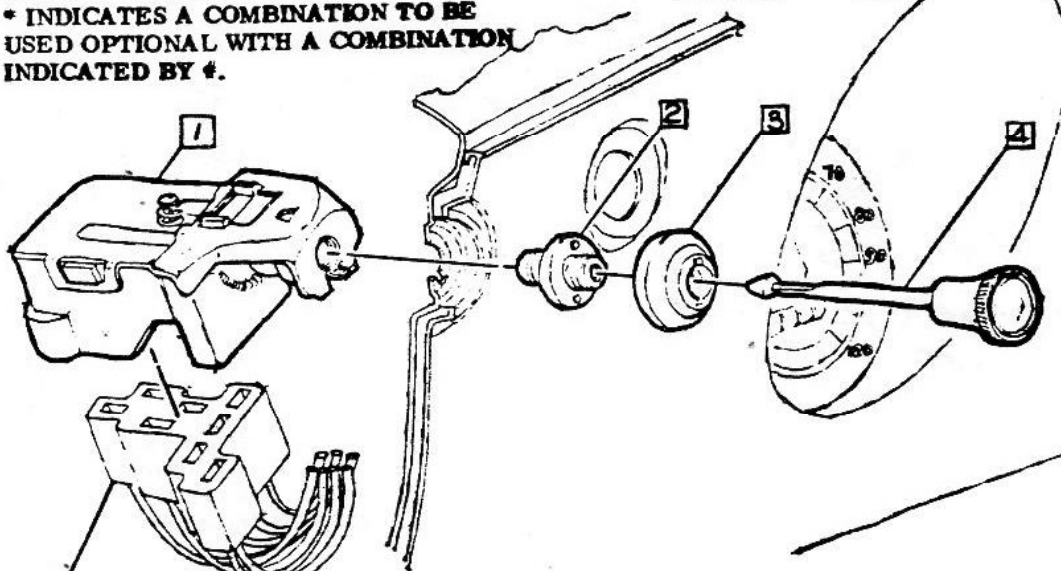
3862100

CORVAIR 10000 SERIES

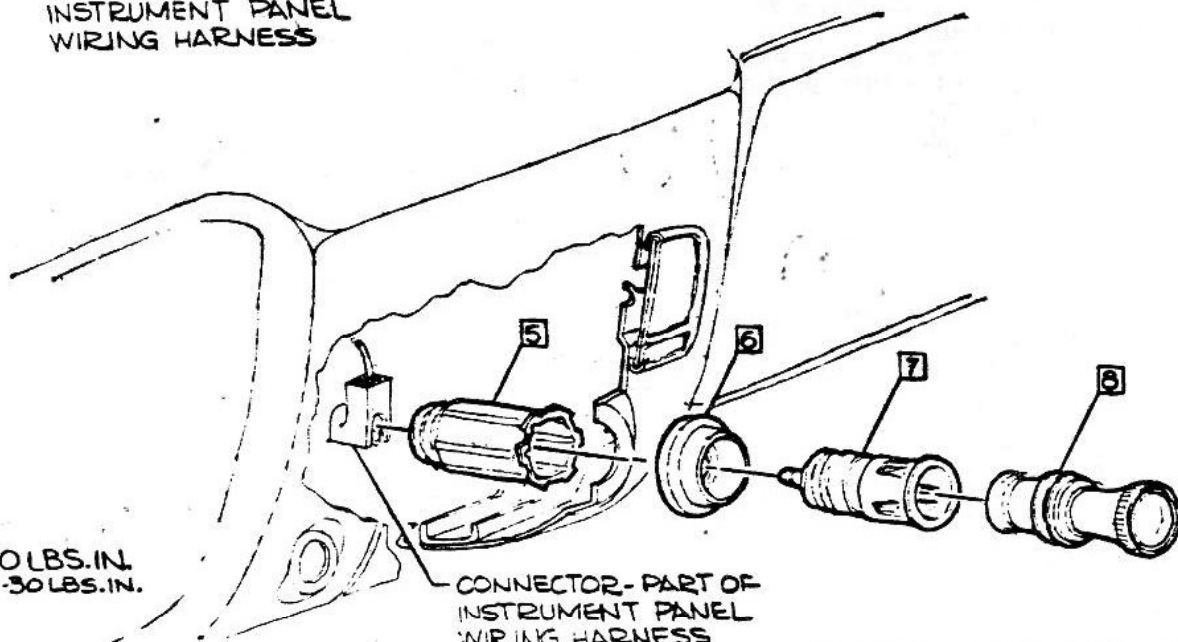
- 1 1995123 SWITCH ASM. -LIGHT (EXC. 10780)
(10700)
- 2 3862680 NUT ASM.
- 3 3862380 BEZEL
- 4 3860104 ROD ASM.

- 5 *3794299 #7002184 RETAINER-CIGARETTE LIGHTER OPT.
- 6 3863020 BEZEL
- 7 *3794298 #7028564 HOUSING ASM. OPT.
- 8 *3861472 #7028979 KNOB ASM. OPT.

* INDICATES A COMBINATION TO BE USED OPTIONAL WITH A COMBINATION INDICATED BY #.



CONNECTOR - PART OF INSTRUMENT PANEL WIRING HARNESS



▲ 8-10 LBS. IN.
▲ 20-30 LBS. IN.
▲

CONNECTOR - PART OF INSTRUMENT PANEL WIRING HARNESS

CHEVROLET MOTOR DIVISION, GMC		UPC	DATE	SYM	REVISION RECORD	AUTH.	DR	CK
LIGHT SWITCH & CIGARETTE LIGHTER		12	5-4-65	1	TORQUE WAS 8-10 LBS. IN. 2 PLACES	7079145		
10000		B8.						
DWG PEEK 2-15	DATE REL 5-13	REF: PEEK. B1 L-73182 L-73258 L-73057 L-	SHEET					



CHEVROLET

ASSEMBLY INSTRUCTIONS

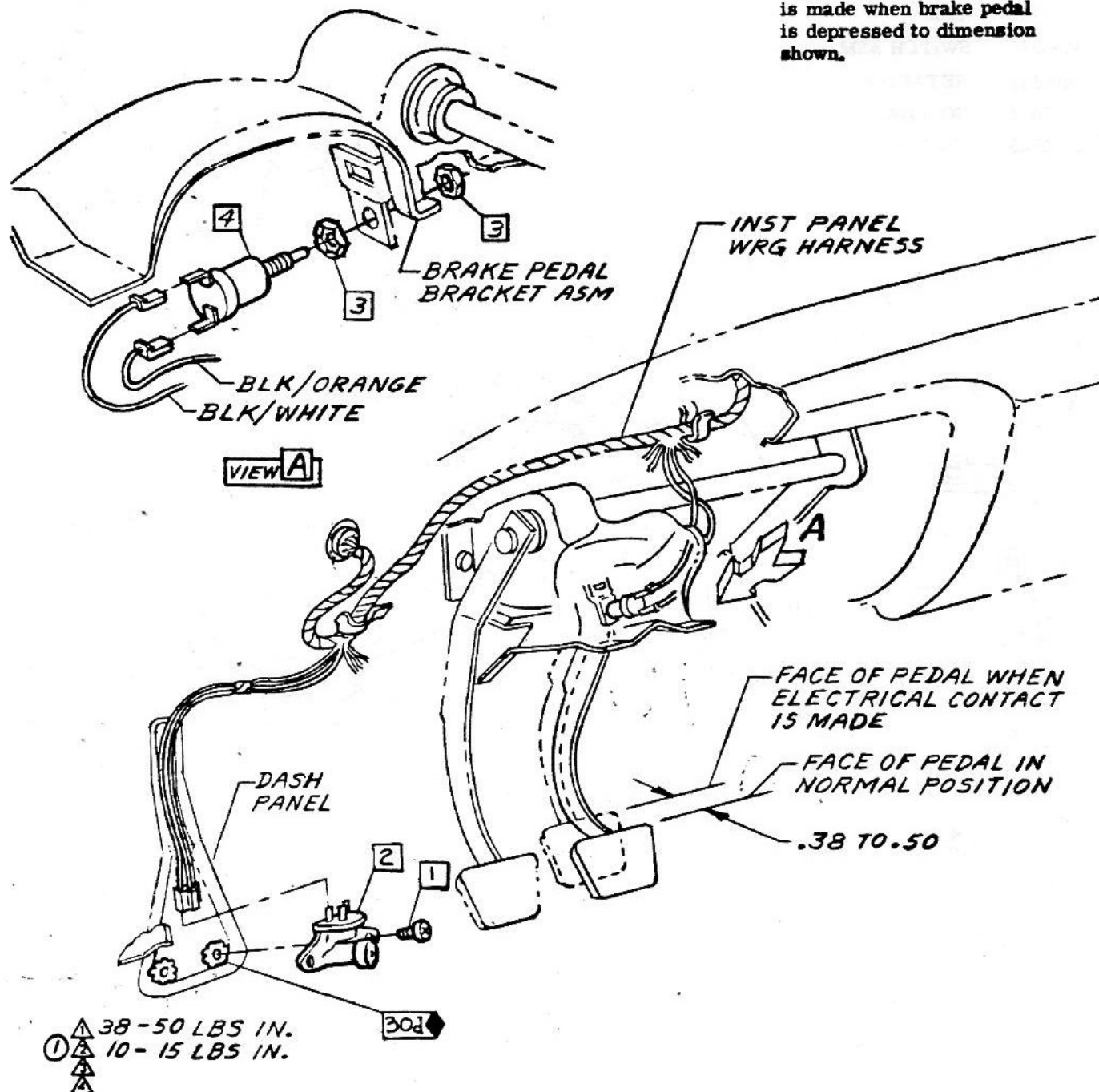
3862100

CORVAIR 10000 SERIES

- ① 1 191985 SCREW ASM.
② 1997028 SWITCH ASM. - DIMMER
③ 9420171 NUT

- ④ 1993509 SWITCH ASM.
3825257 OPT.

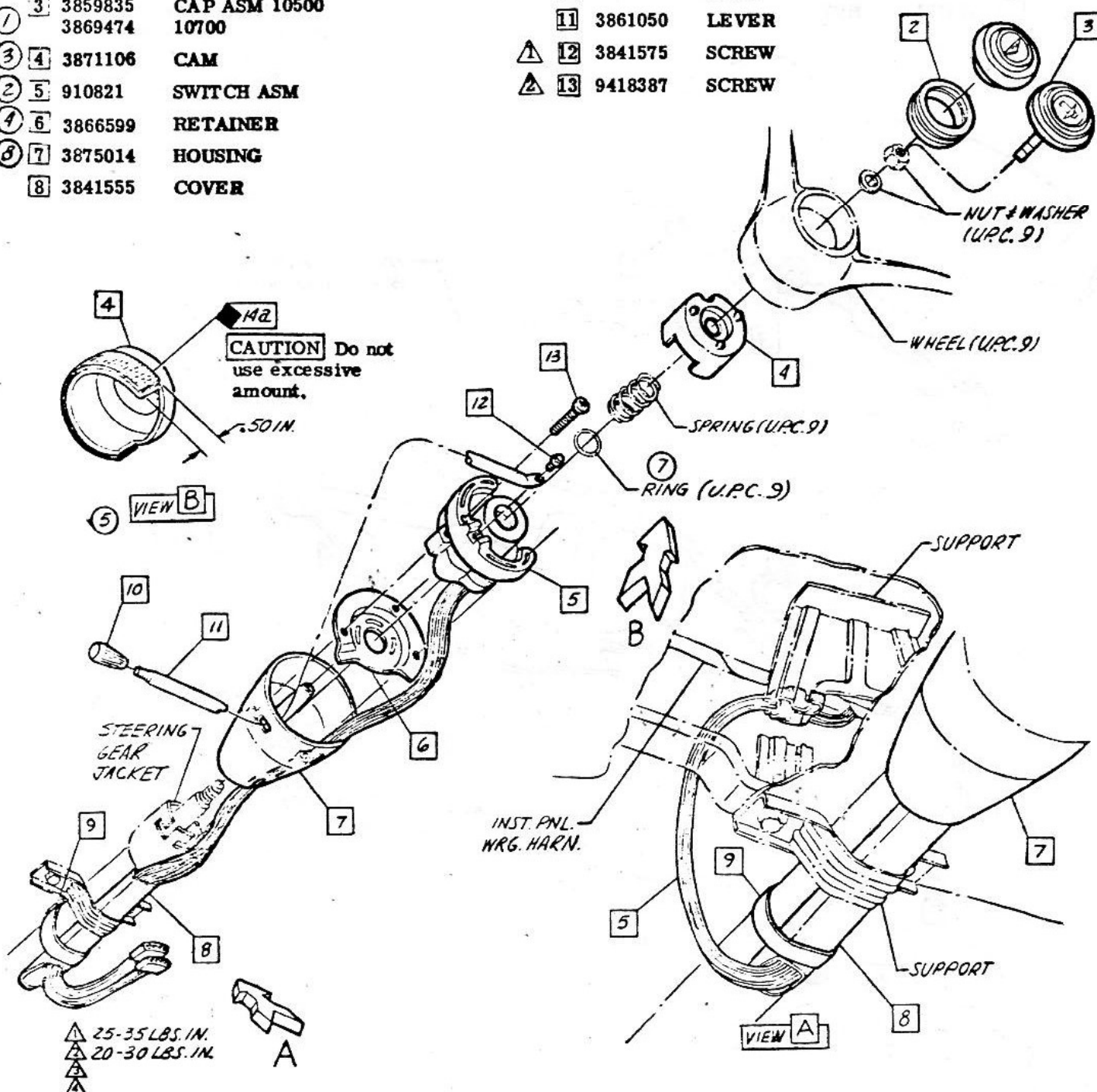
After adjustment of brake pedal, adjust switch asm. so that electrical contact is made when brake pedal is depressed to dimension shown.



CHEVROLET MOTOR DIVISION, GMC		UPC	DATE	SYM	REVISION RECORD	AUTH.	DR	CK
DIMMER & STOP LAMP SWITCH WIRING		12	5-4-65	1	TORQUE (2) WAS 20-25 LBS. IN. 70791	LS	CI	
10000		B9.						
DWG PREL 2-29 DATE REL 5-13		REF: Brel. B5 L- L-65003 L-						
		SHEET						

- ⑦ 3859834 CAP 10100
② 764427 RING 10100
③ 3859835 CAP ASM 10500
③ 3869474 10700
③ ④ 3871106 CAM
② ⑤ 910821 SWITCH ASM
④ ⑥ 3866599 RETAINER
③ ⑦ 3875014 HOUSING
⑧ 3841555 COVER

- ⑥ ⑨ 3724851 TAPE (APPROX 3 IN. TAPE
COVER TO STEERING GEAR JACKET)
⑩ 3782965 KNOB
⑪ 3861050 LEVER
① ⑫ 3841575 SCREW
② ⑬ 9418387 SCREW



• CHEVROLET MOTOR DIVISION, GMC •			UPC	DATE	SYM	REVISION RECORD	AUTH.	DR	CK
DIRECTION SIGNAL SWITCH			12	7-7-64	1	3869474 S-F ADDED	64894	WF	
					2	WAS 910746 SWITCH	61704		DP
				7-25-64	3	W-S 3861049 CAM	65709	WF	
					4	WAS 3852139 RETAINER	63892		
					5	VIEW B ADDED	65681		DF
				9-22-64	6	WAS 3793788 FASTENER	15875	WF	DF
				1-25-65	7	WAS SLEEVE	67250	AP	
					8	WAS 3861048 HOUSING			C1
10000			C1.						
DWG PREL 3-6									
DATE REL 3-6-64									
REF: Prel. C-5 L-71683 L-									
L- L- L-									
			SHEET						



PRELIMINARY

ASSEMBLY INSTRUCTIONS

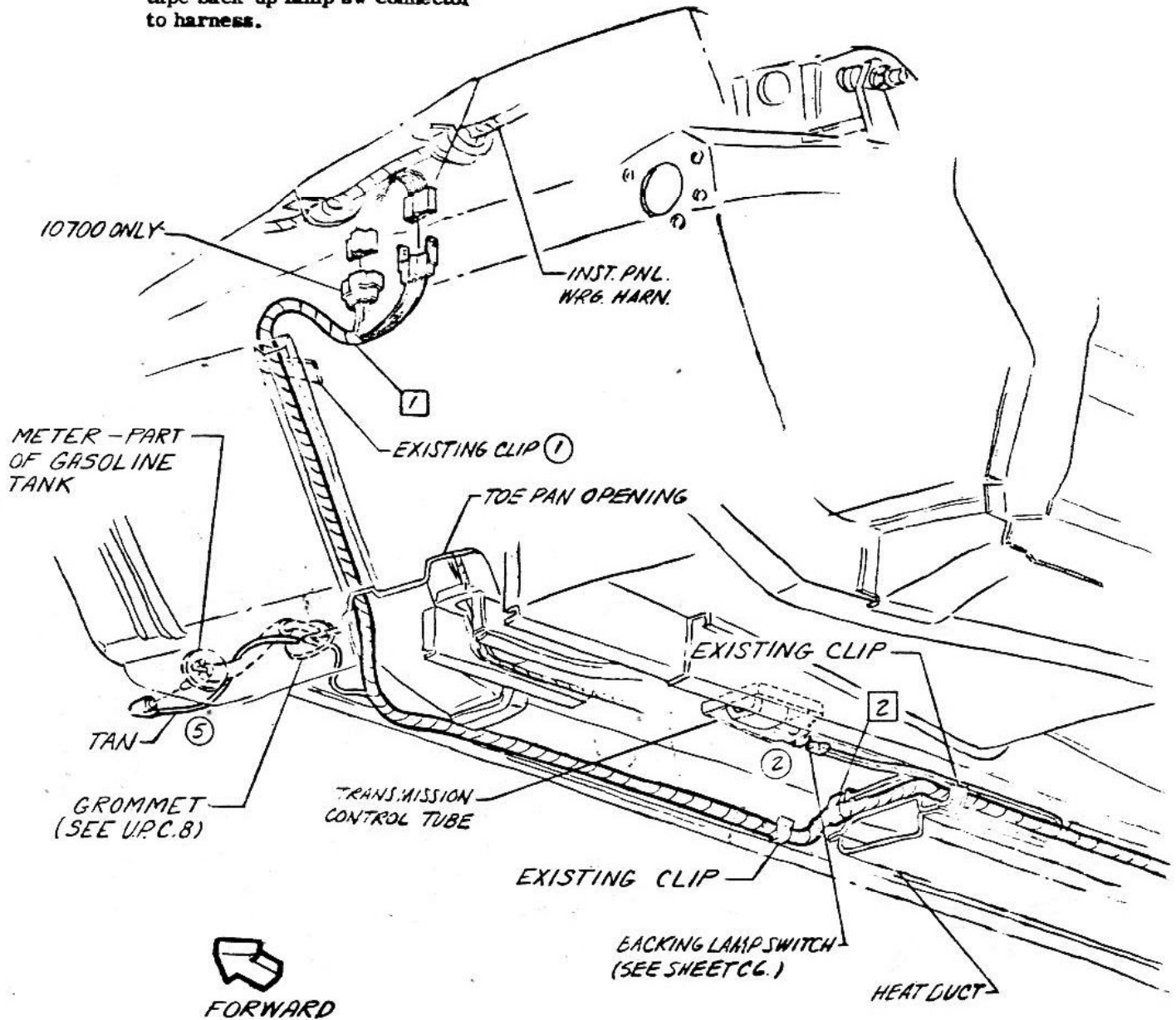
3862100

CORVAIR 10000 SERIES

- ③ 1 2989280
- ④ 2989281
- ② 3724851

HARNESS ASM-BODY (10100-500)
(10700)

TAPE (6 INCHES) 10100- Used to
tape back-up lamp sw connector
to harness.



CHEVROLET MOTOR DIVISION, GMC				UPC	DATE	SYM	REVISION RECORD	AUTH.	DR	CK
BODY HARNESS ROUTING				12	7-7-64	1	EXISTING CLIP ADDED	65056	WF	DP
10000				REF C3		2	DRAWING REVISED	65056	WF	
DWG PREL 3-11-64				C2.		3	1989280 WAS 2989281 HARNESS			
DATE REL 3-11-64				SHEET		4	2989281 WAS 2989281 HARNESS			
REF: Prel. C6 L-73258L						5	FUEL TANK WIRE REROUTED			HB
L- L- L-										



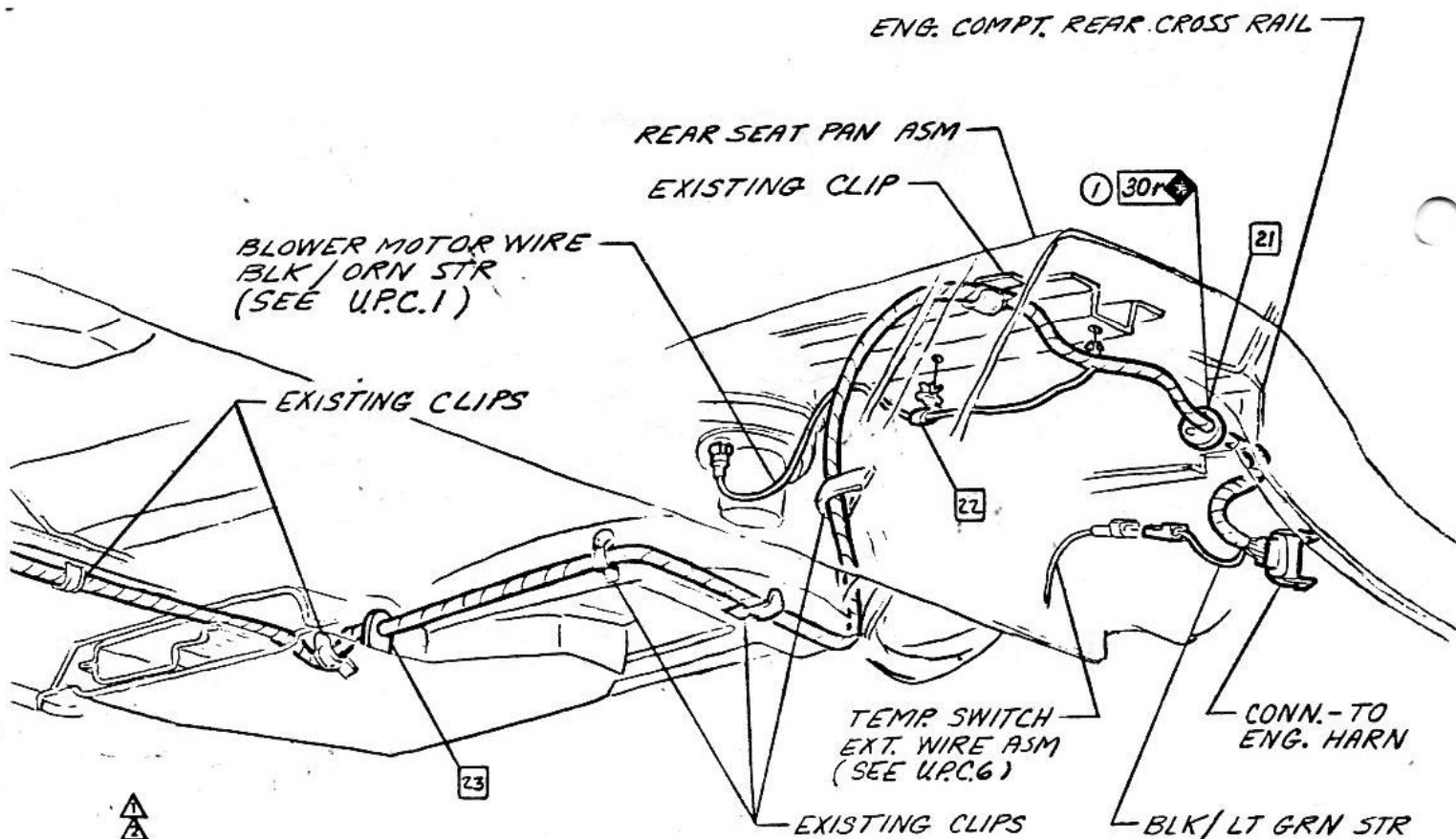
CHEVROLET

ASSEMBLY INSTRUCTIONS

3862100

CORVAIR 10000 SERIES

- 21 3861296 GROMMET
2 3848472 RETAINER
23 3861298 GROMMET



• CHEVROLET MOTOR DIVISION, GMC •				UPC	DATE	SYM	REVISION RECORD	AUTH.	DR	CK
BODY HARNESS ROUTING & GROMMETS				12	12/1/64	1	SYM. SUP ADDED	15058	BR	CI
10000				REF C2						
DWG PREL 3-11-64				C3.						
DATE REL 3-11-64				SHEET						



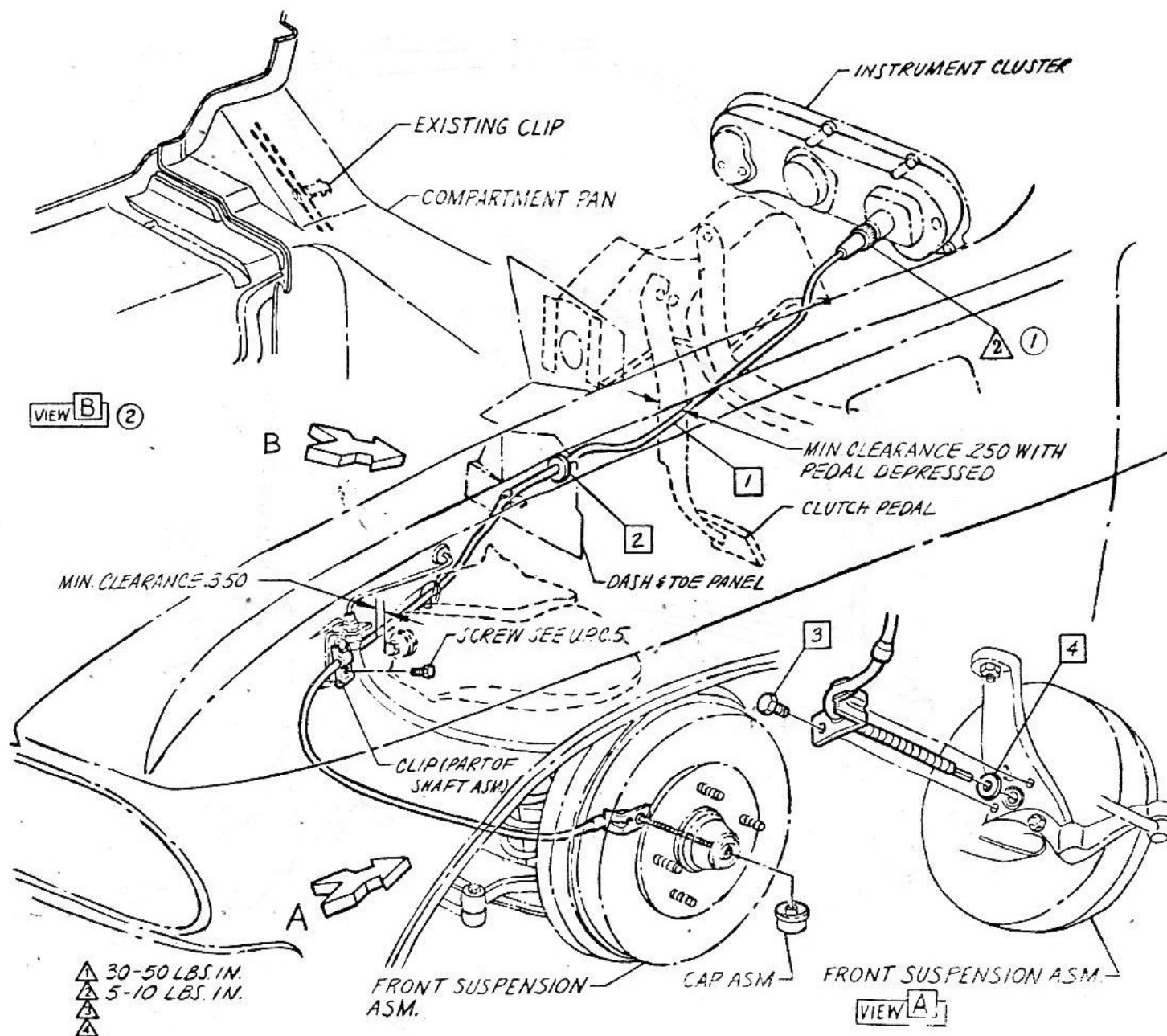
CHEVROLET

ASSEMBLY INSTRUCTIONS

3862100

CORVAIR 10000 SERIES

- ① 3861051 SHAFT ASM
② 3792008 GROMMET
③ 3861053 BOLT
④ 3861052 SEAL



CHEVROLET MOTOR DIVISION, GMC				UPC	DATE	S.M.	RECORD
SPEEDOMETER SHAFT				12			
10000				C4.			
DWG PREL 2-20	WJ	REF: Prel. C 2	L- 72381	L-			
DATE PREL 2-20-64		L-	L-	L-			
				SHEET 1			



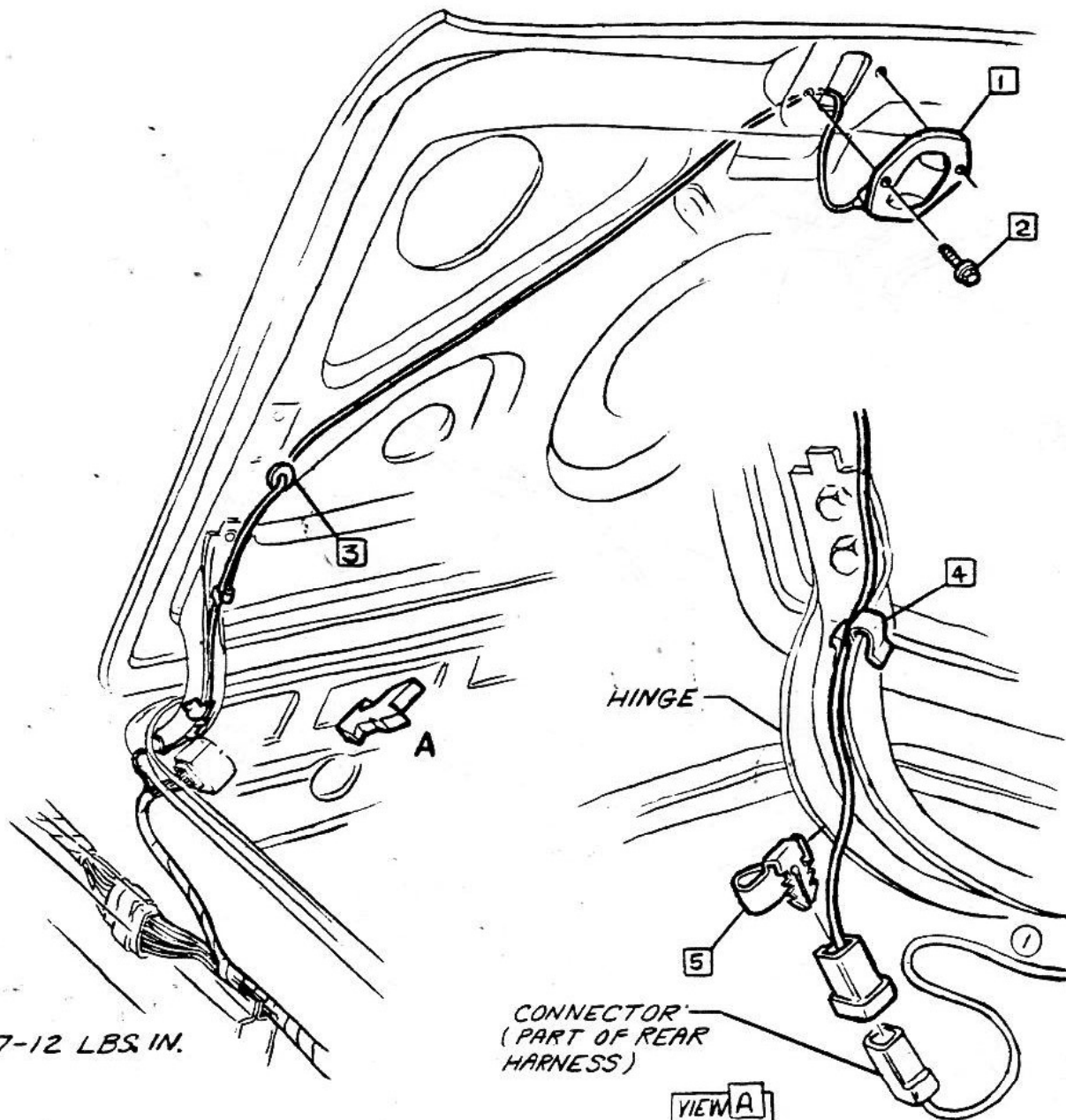
CHEVROLET

ASSEMBLY INSTRUCTIONS

3862100

CORVAIR 10000 SERIES

- | | | |
|---|---------|-----------|
| 1 | 910656 | LAMP ASM. |
| 2 | 187875 | SCREW |
| 3 | 6256768 | GROMMET |
| 4 | 3833476 | CLIP |
| 5 | 2989916 | CLIP |



CHEVROLET MOTOR DIVISION, GMC			UPC	DATE	SYM	REVISION RECORD	AUTH.	DR	CK.
REAR LICENSE PLATE LAMP WIRING			12	8-4-64	1	ITEM 4 REMOVED	15830	WF	DF
10000			C5.	9-21-64	2	WAS 2973390 CLIP	15881	WF	
DWG PREL 3-4					3	WAS 3771184 GROMMET	15890	DF	
DATE REL 3-4					4	WAS 3897358 GROMMET	15890	WF	DF
REF: Prel. C4									
L- 73258L									
L- L-									
L- L-									
SHEET									

1965-142

+



CHEVROLET

ASSEMBLY INSTRUCTIONS

3862100

CORVAIR 10000 SERIES

- ① 1 9419663 SCREW
- ② 2 3869592 STRIKER
- ③ 3 3869593 SWITCH & BRACKET ASM.

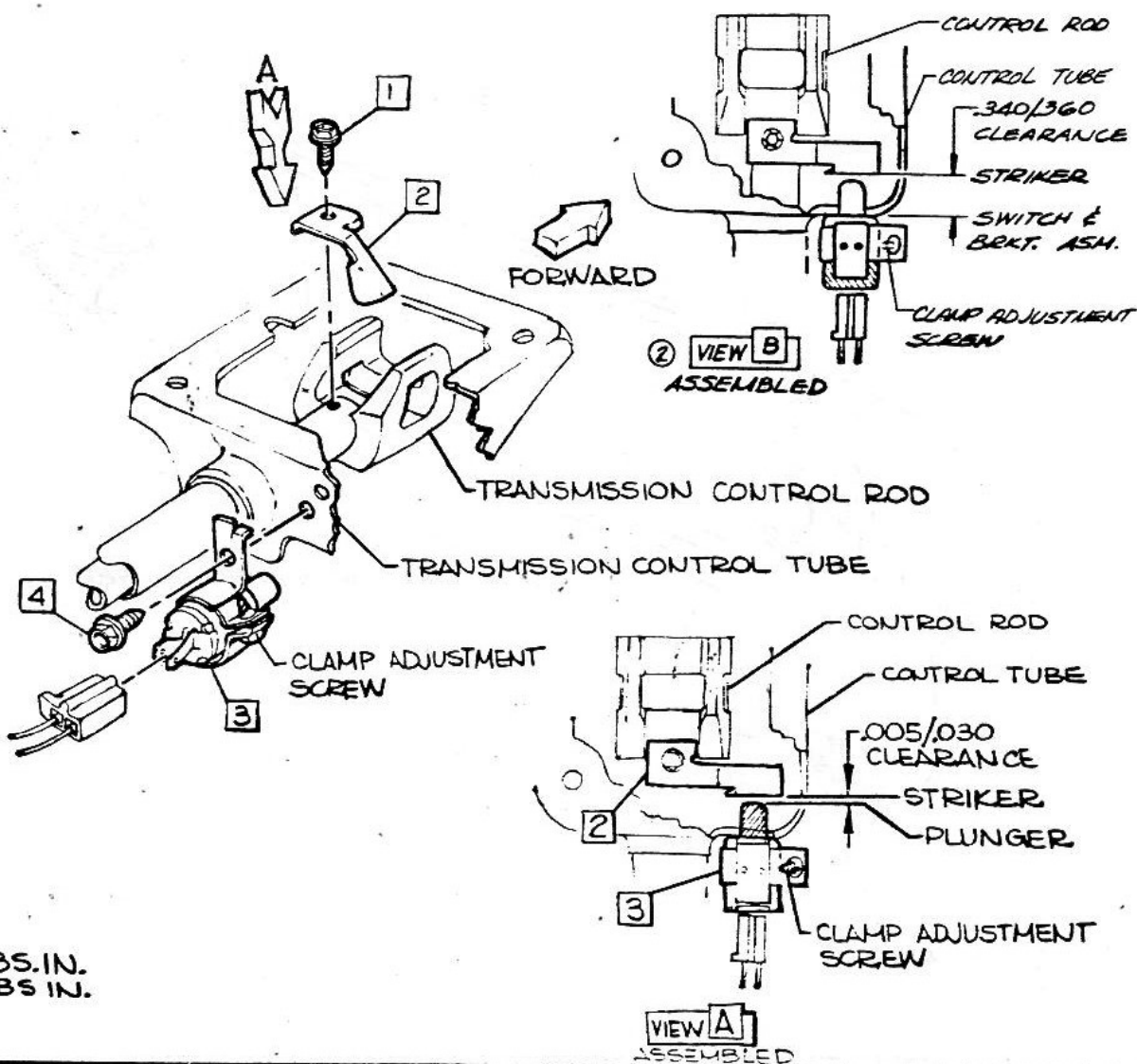
- ② 4 9419305 SCREW

ADJUSTMENT PROCEDURE (See View A)

1. Place transmission in 2nd gear.
2. Loosen clamp adjustment screw.
3. Adjust Switch Asm. to give .005 to .030 clearance between striker & plunger.
4. Retighten clamp adjustment screw 7-12 lbs. in.

③ OPTIONAL ADJUSTMENT PROCEDURE (See View B)

1. Place transmission in reverse gear.
2. Loosen clamp adjustment screw.
3. Adjust Switch Asm. to give .340 to .360 clearance between striker & face of switch.
4. Retighten clamp adjustment screw 7-12 lbs. in.



- △ 15-20 LBS. IN.
- △ 30-40 LBS. IN.
- △

CHEVROLET MOTOR DIVISION, GMC				UPC	DATE	SYM	REVISION RECORD	AUTH.	DR	CK
BACKING LAMP SWITCH INSTALLATION				12	7-10-64	1	REDRAWN & REV. SEC	65036	FL	DP
					2-17-65	2	VIEW (B) ADDED	65896	LM	
10500-700				C6.		3	OPT. ADJ. PROC. ADDED			CI
DWG PREL 225				SHEET						
DATE REL 2-25										
REF: Prel. C3 L-76366 L-75978										
L- L- L-										



CHEVROLET

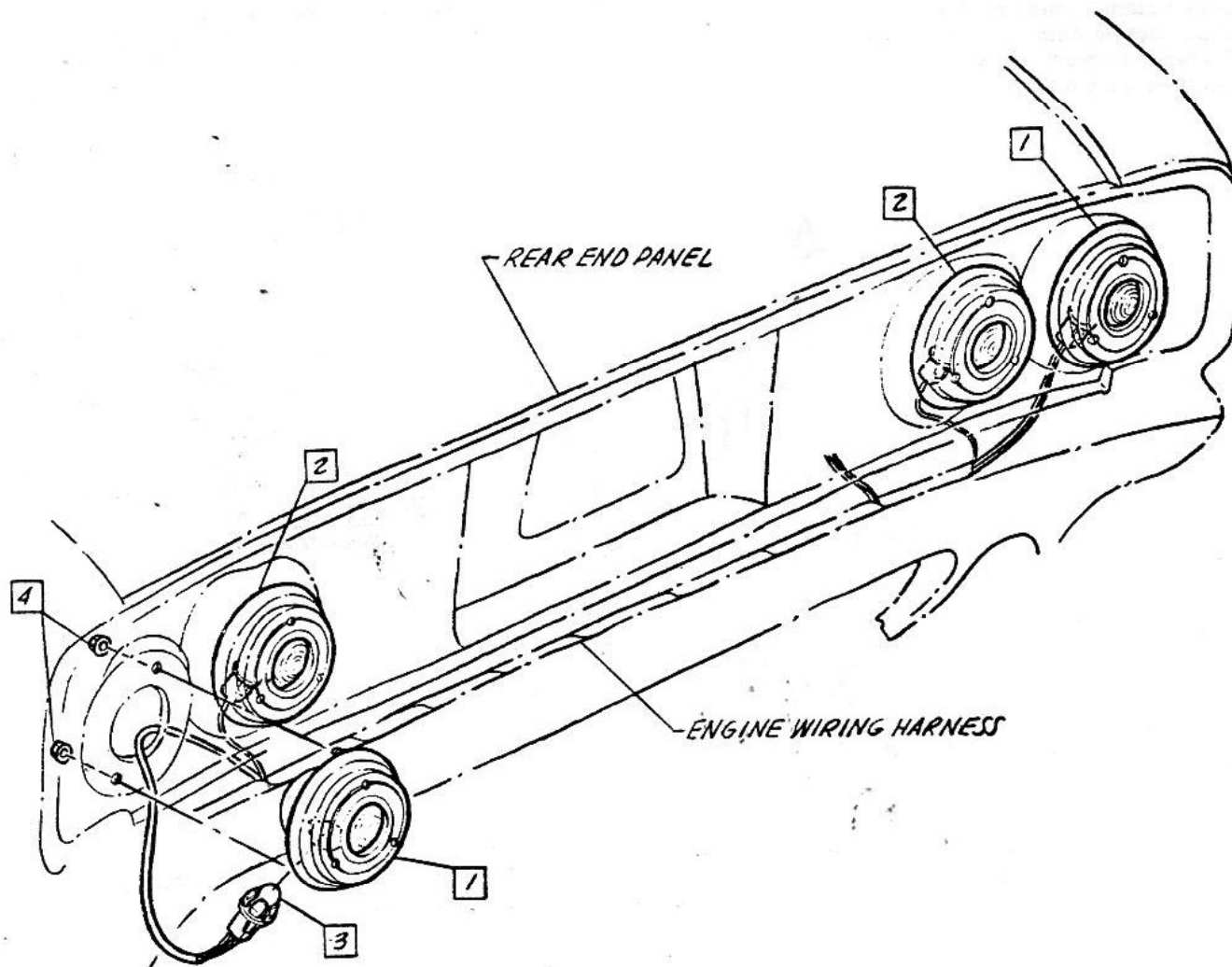
ASSEMBLY INSTRUCTIONS

3862100

CORVAIR 10000 SERIES

- 1 910626 LAMP ASM TAIL, STOP &
DIR. SIGNAL
- 2 910627 LAMP ASM BACKING (10500-
700)
- 3 BULB
9417867
9417868 TAIL, STOP & DIR SIGNAL
BACKING LAMP (10500-700)

①△④ 9420222 NUT



△ 30-40 LBS. IN.
△
△
△

CHEVROLET MOTOR DIVISION, GMC		UPC	DATE	SYM	REVISION RECORD	AUTH.	DR	CK
REAR END LIGHTING		12	7-7-64	1	TORQUE ADDED	64798	WF	DP
10000		C7.						
DWG PREL 2-14 W4								
DATE REL 2-14								
REF: Prel, C1 L-73258 L-								
L- L- L-								
SHEET								

1965-144

⊥

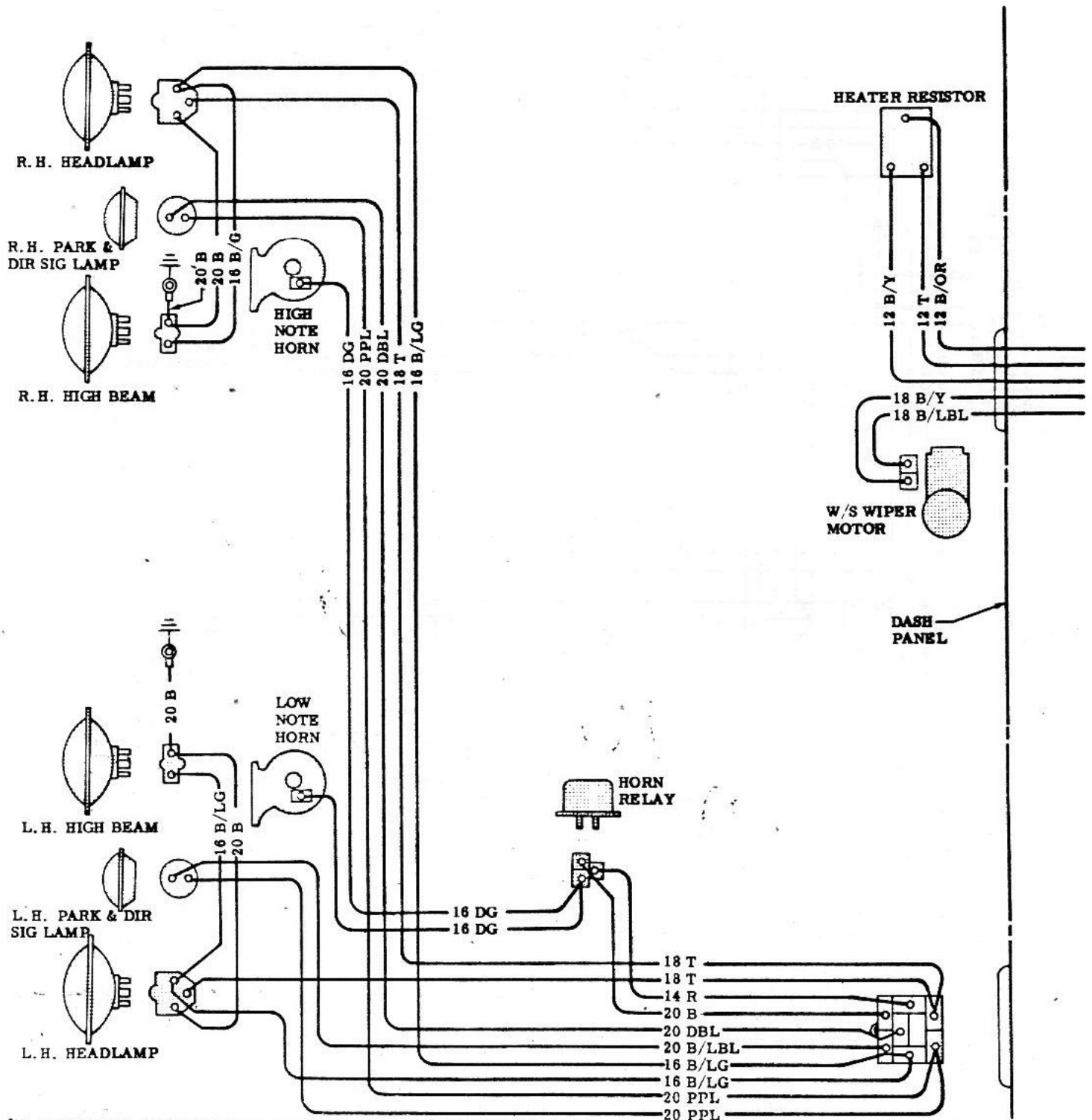


PROJECT

ASSEMBLY INSTRUCTIONS

3862100

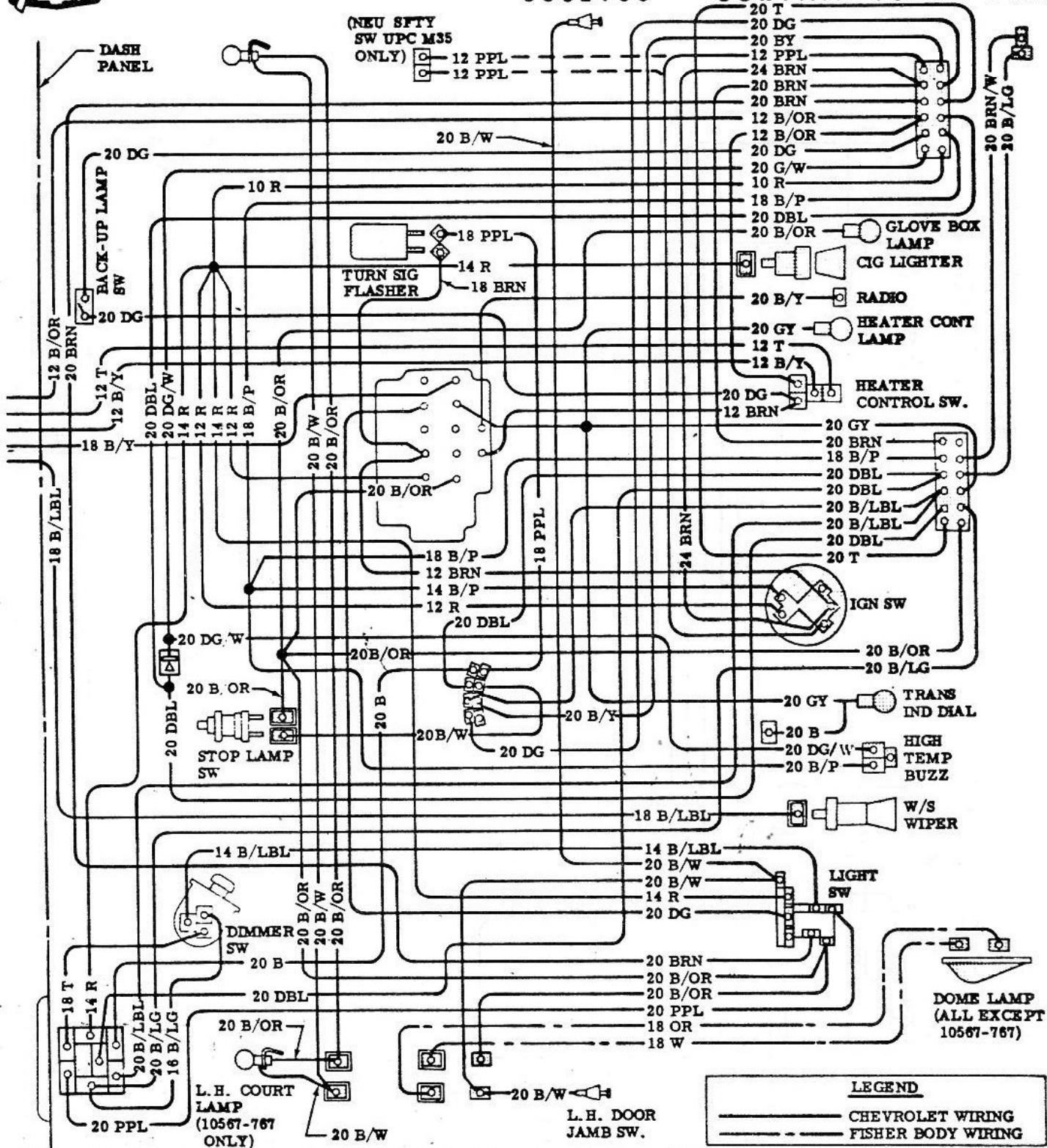
CORVAIR 10000 SERIES



CHEVROLET MOTOR DIVISION, GMC				UPC	DATE	SYM	REVISION RECORD	AUTH.	DR	CK
WIRING DIAGRAM - FRONT END				12	3-23-64	1	REDRAWN WITHOUT CHANGE	—	RV	DF
10000				D1.						
DWG PREL 4-23 RV REF: Prel. D1 L- L-				SHEET						
DATE REL 4-23 L-756X3 L- L-										

3 8 6 2 1 0 0

CORVAIR 10000 SERIES



• CHEVROLET MOTOR DIVISION, GMC •

UPC

DATE	SYM
------	-----

REVISION RECORD

AUTH DR CK

WIRING DIAGRAM-FUSE & INSTRUMENT PANEL

12

9-2-55	1	REDRAWN WITHOUT CHANGE	—	RV of
--------	---	------------------------	---	-------

10000

D2.

DWGPREL5-19	RV	REF: Prel. D4	L-	L-
DATE REL 5-19		L-75683	L-	L-

SHEET 18

1965-146

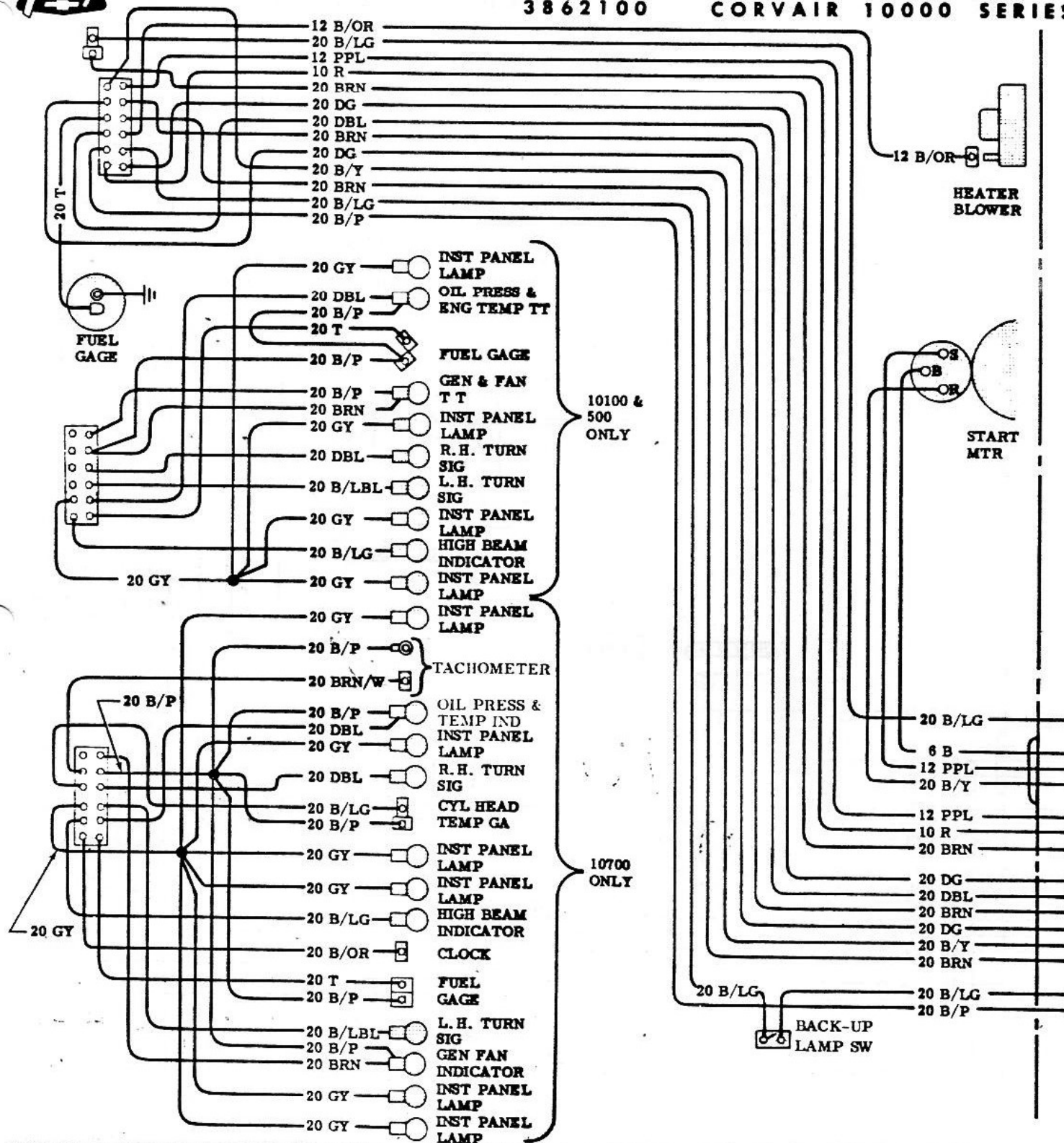


CHEVROLET

ASSEMBLY INSTRUCTIONS

3862100

CORVAIR 10000 SERIES



CHEVROLET MOTOR DIVISION, GMC

UPC

DATE SYN

REVISION RECORD

AUTH DR CK

WIRING DIAGRAM - INSTRUMENT CLUSTER & BODY HARNESS

12

3-23-64 1 REDRAWN WITHOUT CHANGE

— R/DE

10000

D3.

DWGPREL5-13 RV REF: Prel-D3 L- L-
DATE REL 5-13 L-75682 L- L-

SHEET

1965-147



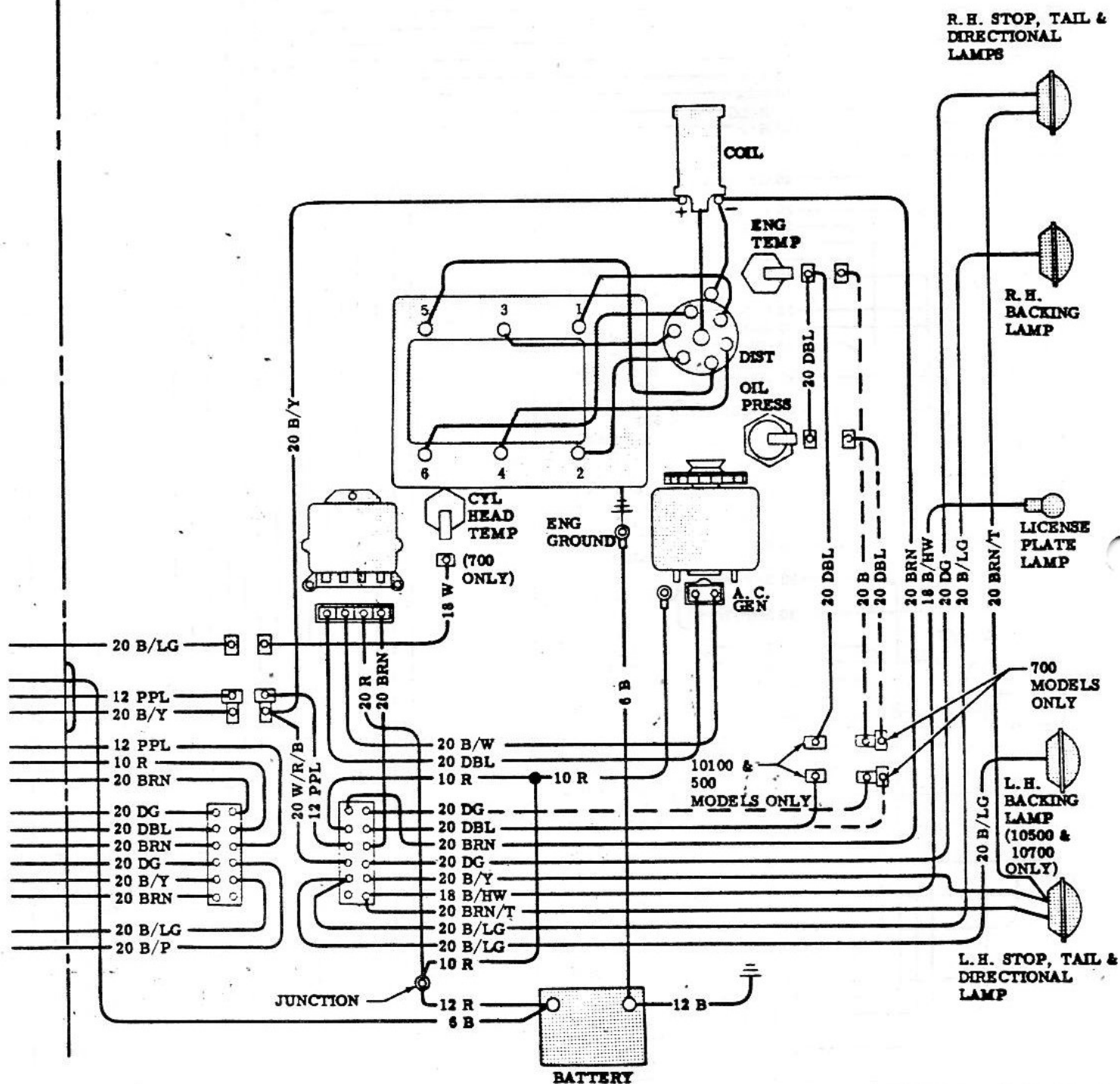
R H S T O L E T

+

ASSEMBLY INSTRUCTIONS

3862100

CORVAIR 10000 SERIES



CHEVROLET MOTOR DIVISION, GMC				UPC	DATE	SYM	REVISION RECORD	AUTH.	DR	CK
WIRING DIAGRAM-ENGINE & TAIL LAMPS				12	3-23-64	1	REWRANW WITHOUT CHANGE	—	RV	DF
10000				D4.						
DWG PREL 4-8 RV REF: Prel. D2 L- L-				SHEET						
DATE REL 4-8 L- 75682 L- L-										

1965-148