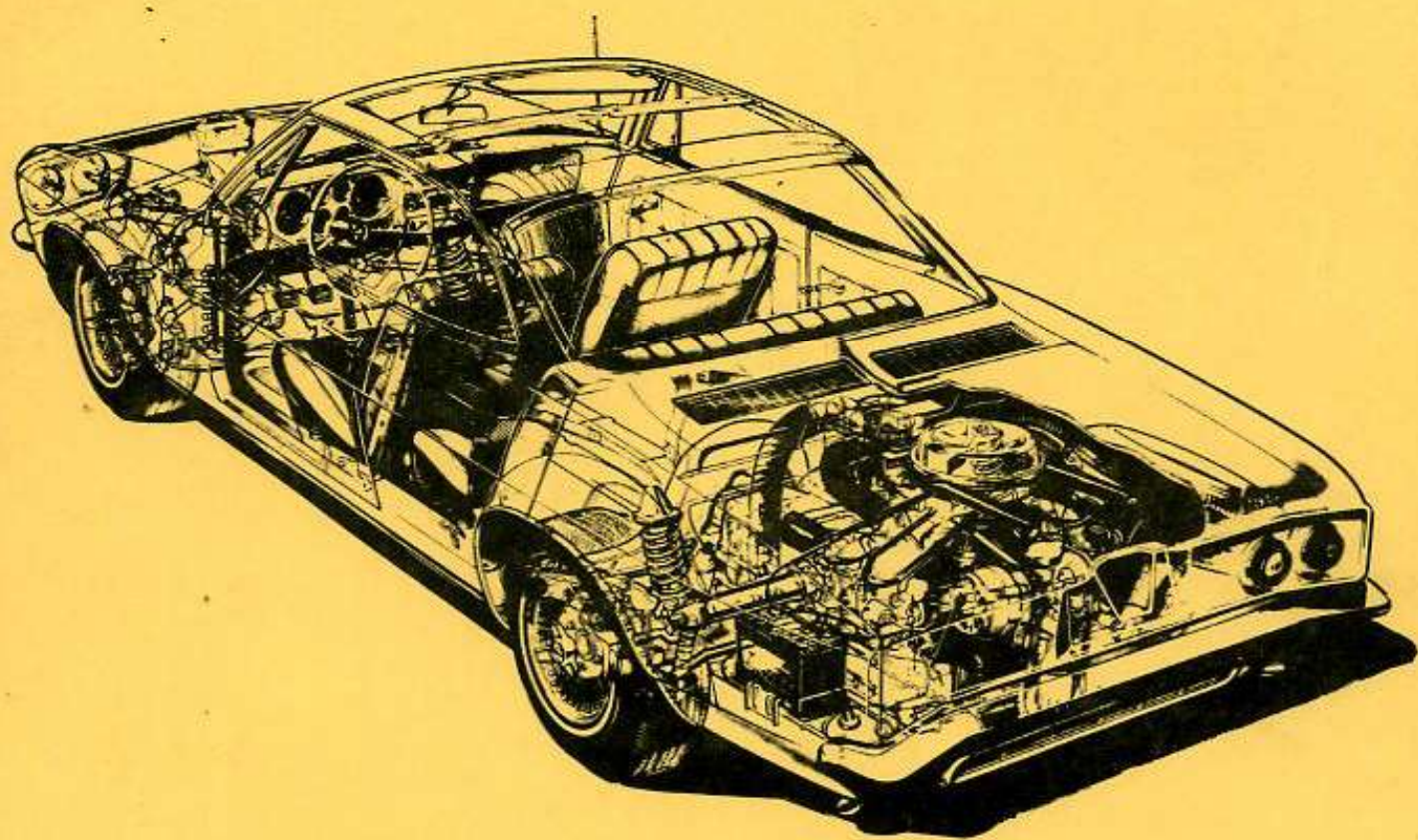


ASSEMBLY MANUAL



**1965
CORVAIR**

C7315



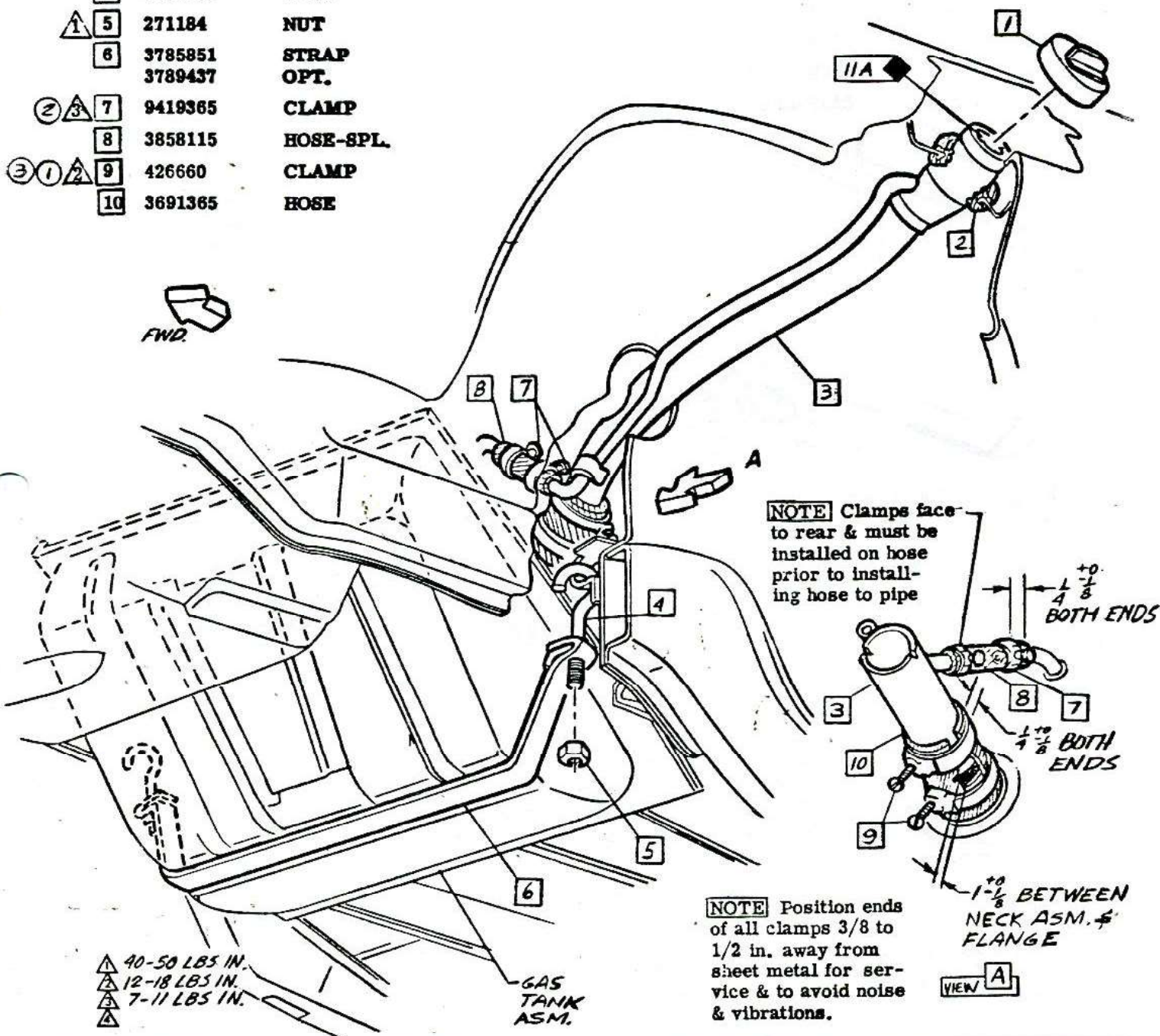
CHEVROLET

ASSEMBLY INSTRUCTIONS

3862100

CORVAIR 10000 SERIES

- | | | |
|---------|---------|-----------|
| 1 | 3843698 | CAP ASM. |
| 2 | 3786677 | SEAL |
| ④ 3 | 3875010 | NECK ASM. |
| 4 | 6257681 | BOLT |
| ① 5 | 271184 | NUT |
| 6 | 3785851 | STRAP |
| | 3789437 | OPT. |
| ② 3 7 | 9419365 | CLAMP |
| 8 | 3858115 | HOSE-SPL. |
| ③ ① 2 9 | 426660 | CLAMP |
| 10 | 3691365 | HOSE |



• CHEVROLET MOTOR DIVISION, GMC •				UPC	DATE	SYM	REVISION RECORD	AUTH.	DR	CK
GAS TANK STRAPS & FILLER NECK				8	7-2-64	1	WAS 42660 CLAMP	—	NC	DP
					9-30-64	2	WAS 12-18 LBS. IN.	66467	NC	
10000				B1.		3	WAS 7-11 LBS. IN.			HB
					1-25-65	4	WAS 3858110 NECK & DWG REVISED	67250	AP	CI
DWG APR 2-64 NC REF: Prod. B1 L-71716 L-				SHEET X						
DATE REL 5-20 L- L- L-										

1965-102

+

1 3786275 CLAMP

2 Position ends of all clamps 3/8 to 1/2 in. away from sheet metal for service & to avoid noise & vibrations.

10 3 3750687 PIPE

4 599119 CLIP

9 5 3881629 PIPE-FUEL

6 3863520 CLIP-SPL

7 3753771 CLIP ASM

8 3873641 GROMMET

9 9419305 SCREW

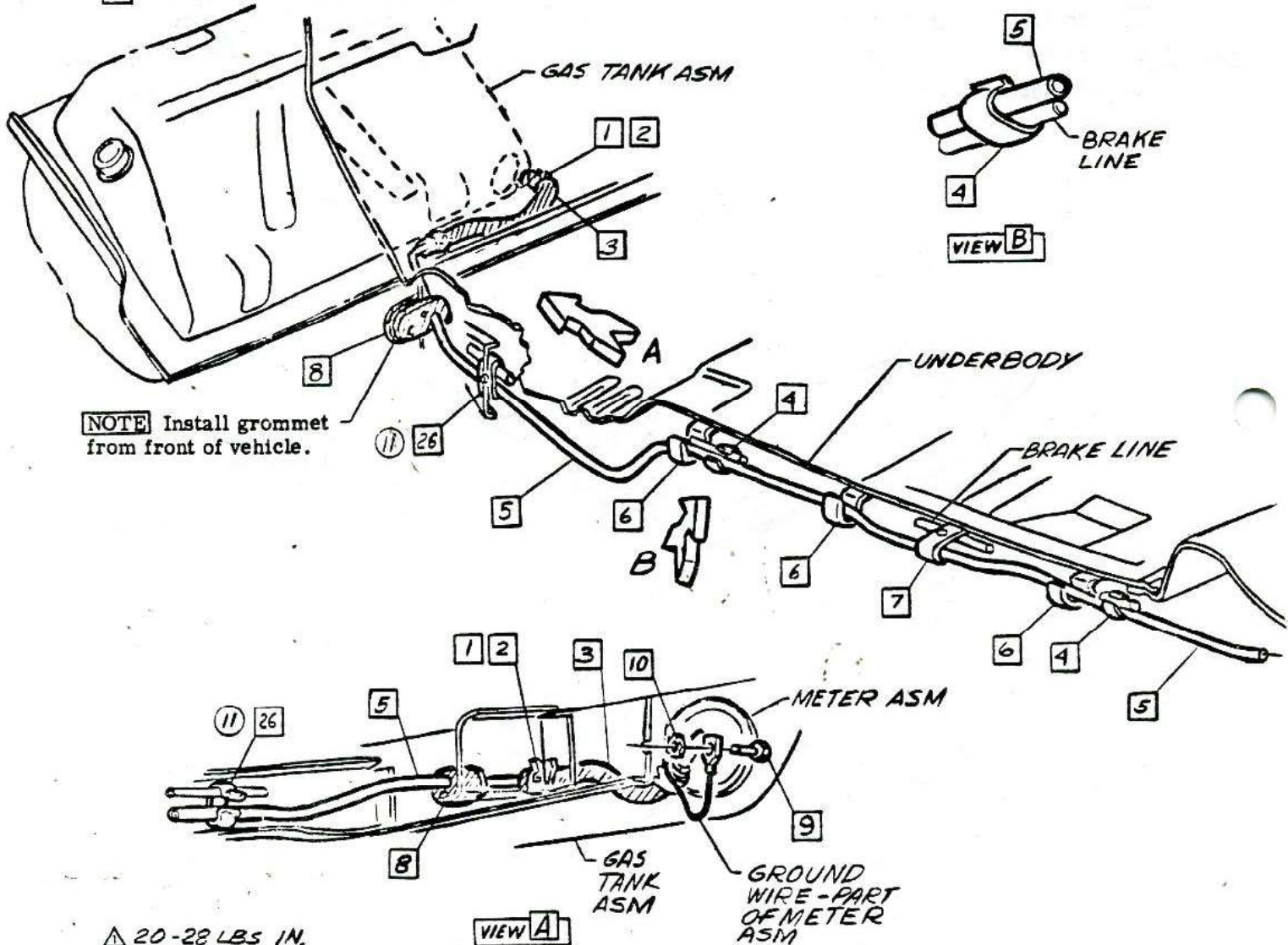
10 138479 L. WASHER

CLIP ASM

GROMMET

SCREW

L. WASHER



20-28 LBS. IN.
15-20 LBS. IN.

CHEVROLET MOTOR DIVISION, GMC.				UPC	DATE	SYM	REVISION RECORD	AUTH.	DR	CK
FUEL LINES				8	5-19-65	10	1-AS 3754096 HOSE	63261	JL	CI
10000				Ref. B3	5-23-65	11	WAS QY 7, (2 PLACES)	63261	JL	CI
DWG PREL. J-5 NC REF: Prel. B3 L-72615 L-				B2.						
DATE R34 4-23 L- L- L-				SHEET						



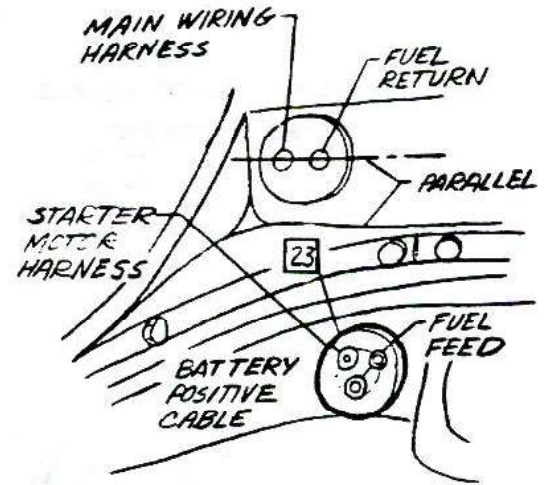
CHEVROLET

ASSEMBLY INSTRUCTIONS

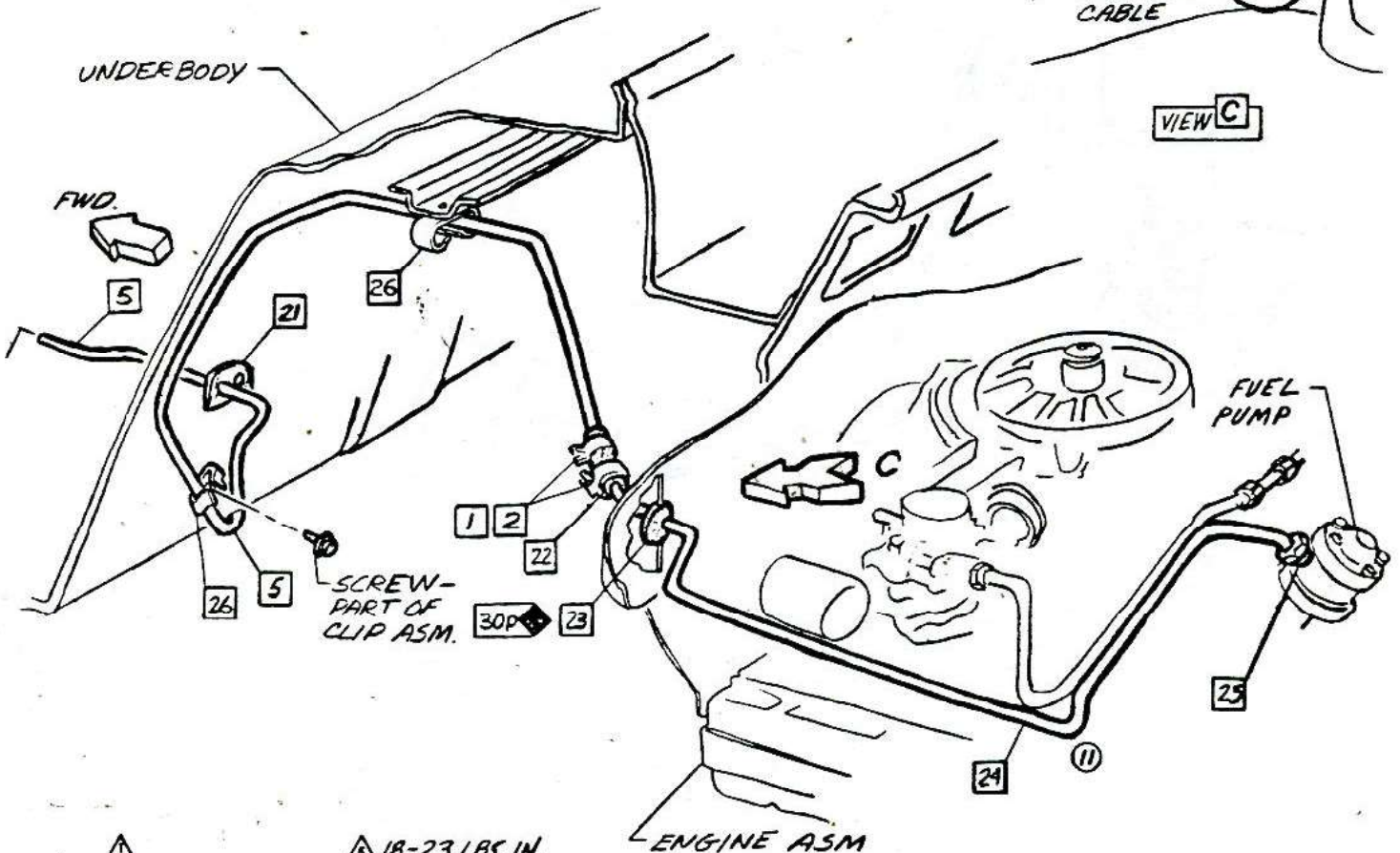
3862100

CORVAIR 10000 SERIES

- | | | |
|---------|---------|-----------|
| 21 | 3861824 | GROMMET |
| 10 3 22 | 3750687 | HOSE |
| 8 23 | 3877832 | GROMMET |
| 3 24 | 3862999 | PIPE ASM |
| 4 25 | 137406 | CONNECTOR |
| 26 | 3861825 | CLIP ASM |



VIEW C



- 115-125 LBS. IN.
- 100-125 LBS. IN.

18-23 LBS. IN.

CHEVROLET MOTOR DIVISION, GMC				UPC	DATE	SYM	REVISION RECORD	AUTH	DR	CK
FUEL LINES				8	12-30-64	8	WAS 3877577 GROMMET & HOSE RE-USED	60357	ER	
10000				Ref. B 2	1-18-65	9	WAS 3877577 HOSE		VT	CI
DWG PREL 3-5 NC REF: Prel. B4 L-72615 L-				B3.	2-17-65	10	WAS 3877517 HOSE	69238	MT	
DATE REL 4-23 L- L- L-				SHEET X		11	"PIPE" DRAWING REVISED			CI



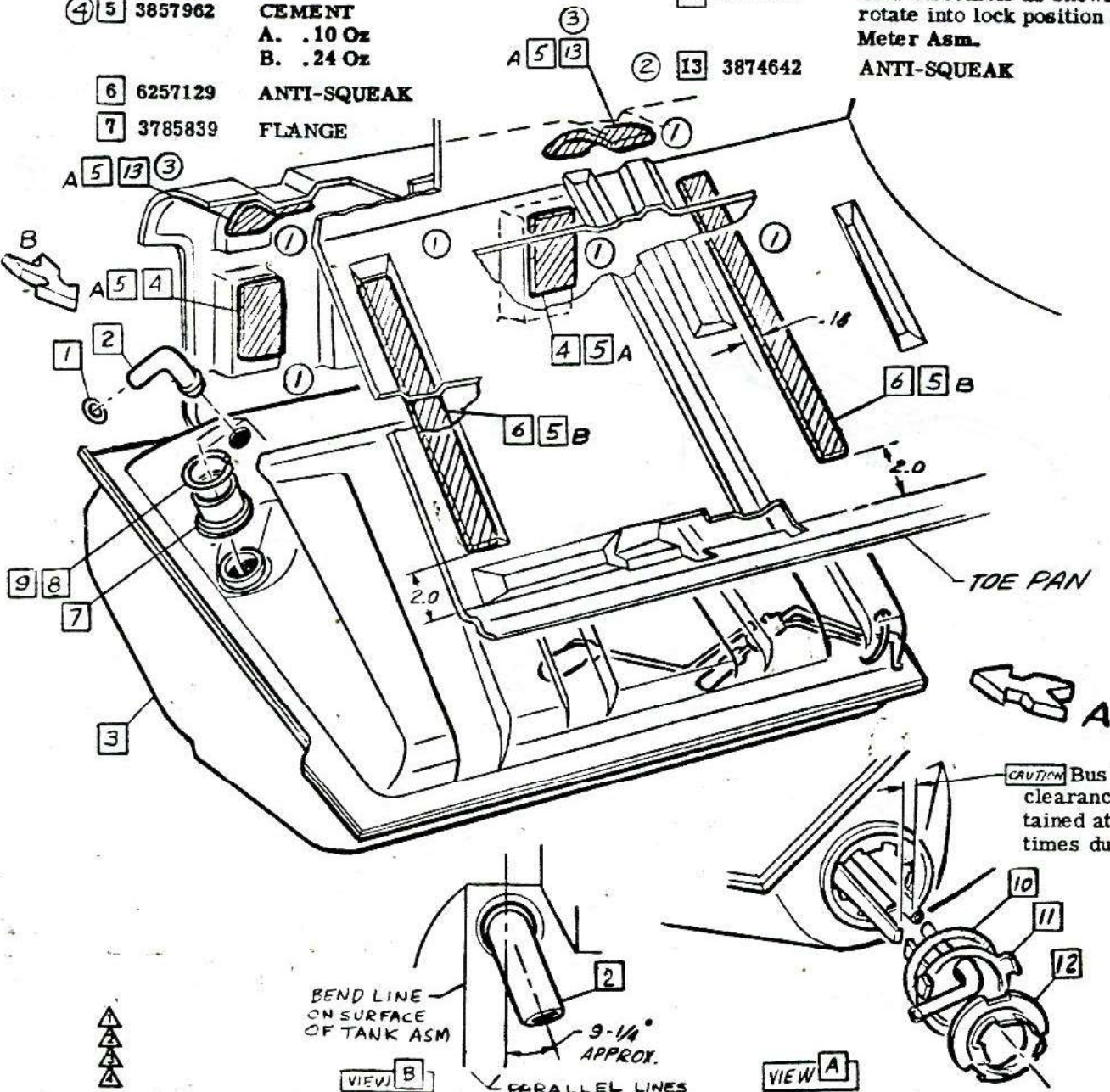
CHEVROLET

ASSEMBLY INSTRUCTIONS

3862100

CORVAIR 10000 SERIES

- | | | | | | |
|---|---------|---|----|---------|--|
| 1 | 3745835 | RING-Sweat Pipe To tank to insure leak proof joint. | 8 | 6255796 | RING-Sweat flange to tank to insure leak proof joint. |
| 2 | 3875004 | VENT PIPE-Position as shown before soldering. | 9 | 3782248 | FLUX .05 OZ |
| 3 | 3858116 | TANK ASM | 10 | 3825206 | GASKET |
| 4 | 3785850 | ANTI-SQUEAK | 11 | 6425531 | METER ASM |
| 5 | 3857962 | CEMENT
A. .10 Oz
B. .24 Oz | 12 | 3774937 | Cam-Assemble as shown & rotate into lock position to secure Meter Asm. |
| 6 | 6257129 | ANTI-SQUEAK | 13 | 3874642 | ANTI-SQUEAK |
| 7 | 3785839 | FLANGE | | | |



CAUTION Bus bar & feed pipe clearance must be maintained at .38 - .50 at all times during installation.

BEND LINE
ON SURFACE
OF TANK ASM

VIEW B

PARALLEL LINES

VIEW A

CHEVROLET MOTOR DIVISION, GMC				UPC	DATE	SYM	REVISION RECORD	AUTH.	DR	CK
GAS TANK & METER				8	10-28-64	1	ANTI-SQUEAK RECORDED	66967	MD	
10000				B4.		2	TOUNGESS/6 PLACES	15901		
DWG/PREL 2-19 NC REF: Prel. B2 L-71716 L-				<input checked="" type="checkbox"/> SHEET 1		3	ITEM 13 WAS ITEM 4 (2 PLACES)		HR	
DATE/REL 5-13 L- L- L-					12-30-64	4	WAS 3380639 CEMENT	15944	BR	CI
					2-17-65	5	WAS 3781740 PIPE	67250	RS	CI

This document was created with Win2PDF available at <http://www.win2pdf.com>.
The unregistered version of Win2PDF is for evaluation or non-commercial use only.
This page will not be added after purchasing Win2PDF.