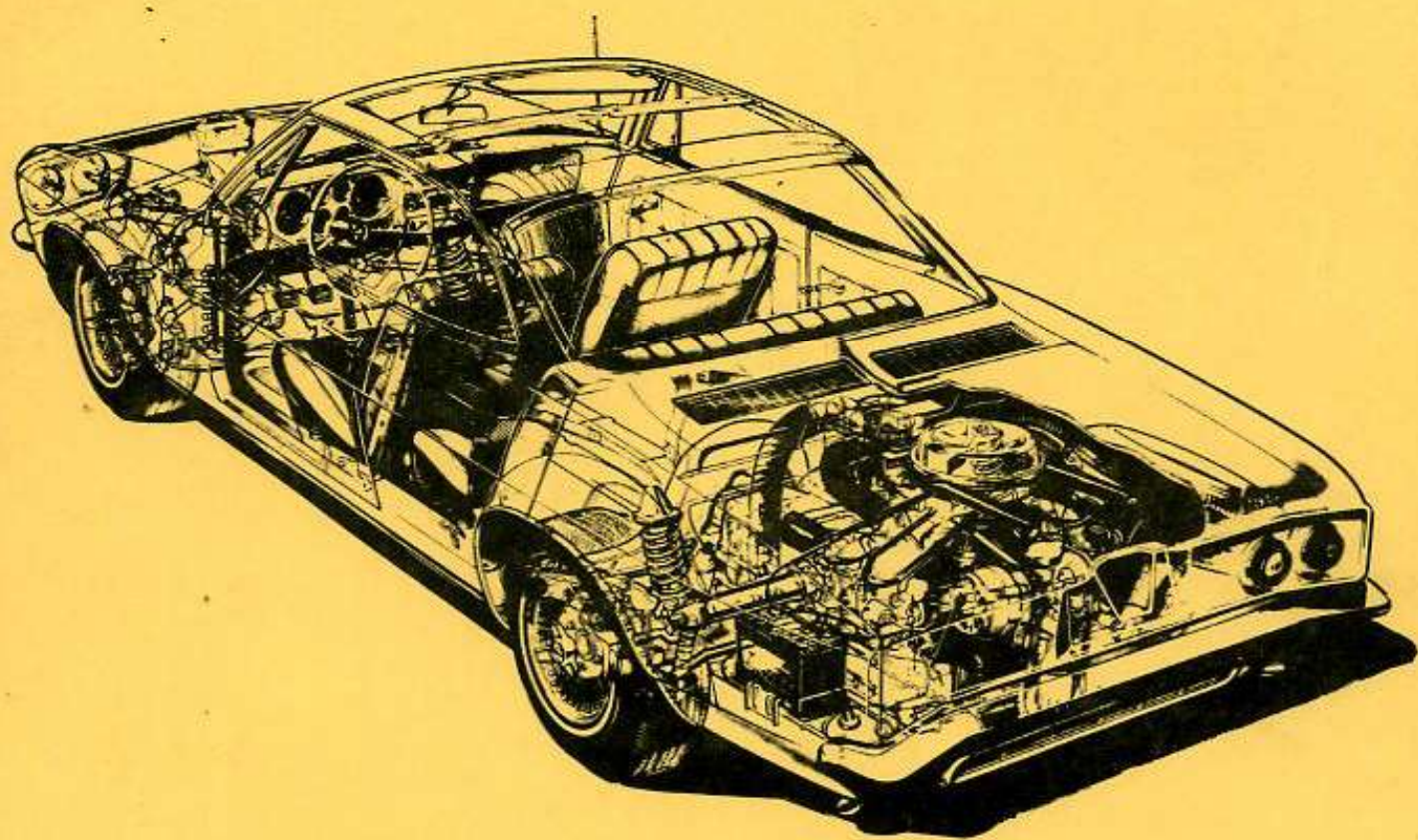


ASSEMBLY MANUAL



**1965
CORVAIR**

C7315



CHEVROLET

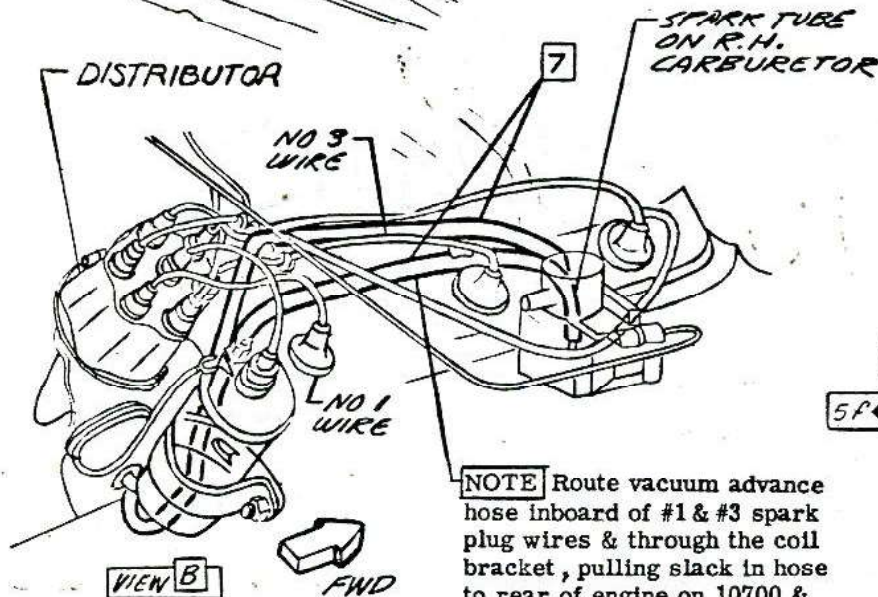
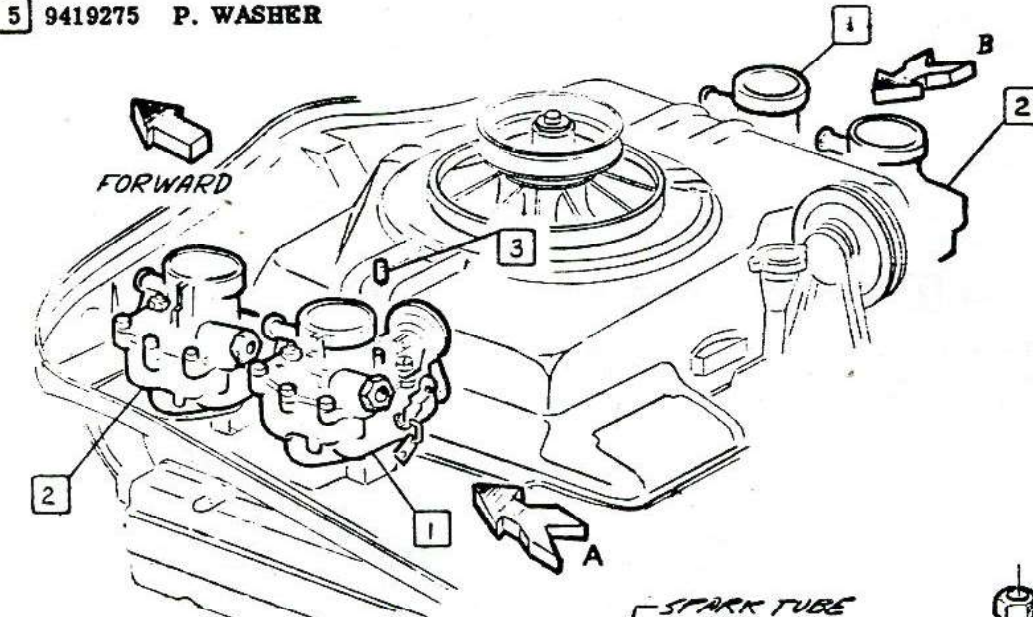
ASSEMBLY INSTRUCTIONS

3862100

CORVAIR 10000 SERIES

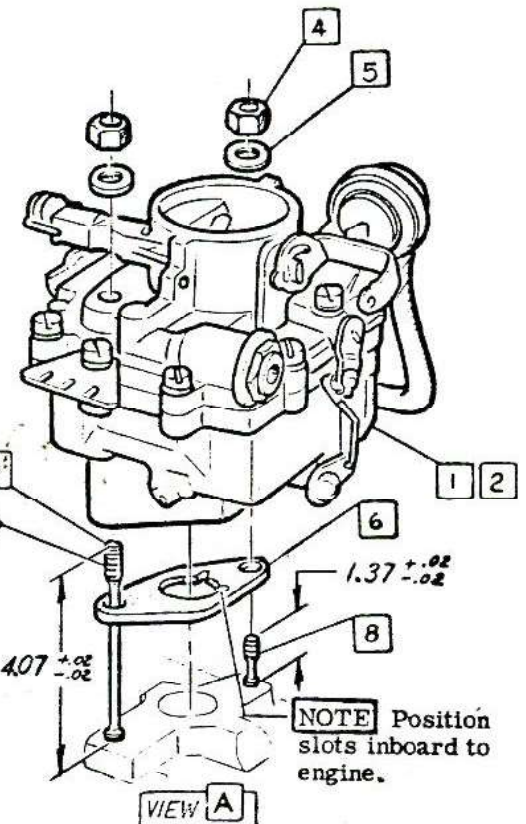
- 1 7025023 CARBURETOR ASM
 2 7025227 CARB ASM-SECONDARY -10700
 3 3767304 PLUG-CARB VAC
 4 120368 NUT
 5 9419275 P. WASHER

- 6 3787453 INSULATOR
 3826302 OPT
 7 3814338 HOSE
 8 3786683 STUD
 9 3786684 STUD



NOTE Route vacuum advance hose inboard of #1 & #3 spark plug wires & through the coil bracket, pulling slack in hose to rear of engine on 10700 & 10100-500 with L 63.

- 7 - 13 LBS FT
 100 - 140 LBS IN



NOTE Position slots inboard to engine.

CHEVROLET MOTOR DIVISION, GMC

UPC

DATE SYM

REVISION RECORD

AUTH. DR. CK

CARBURETOR-SPARK HOSE

6

2-25-65 G 7025023 CARB. ASM - 10700 RHYD. 60014-11

7 WAS 7025226 CARB.

10000

C1.

DWG PREL 3-2 RS REF: Prel. C1 L-75671 L-
DATE REL 5-11 L- L- L-

SHEET 1

1965-69



CHEVROLET

ASSEMBLY INSTRUCTIONS

3862100

CORVAIR 10000 SERIES

1 3819238

ROD-UPPER

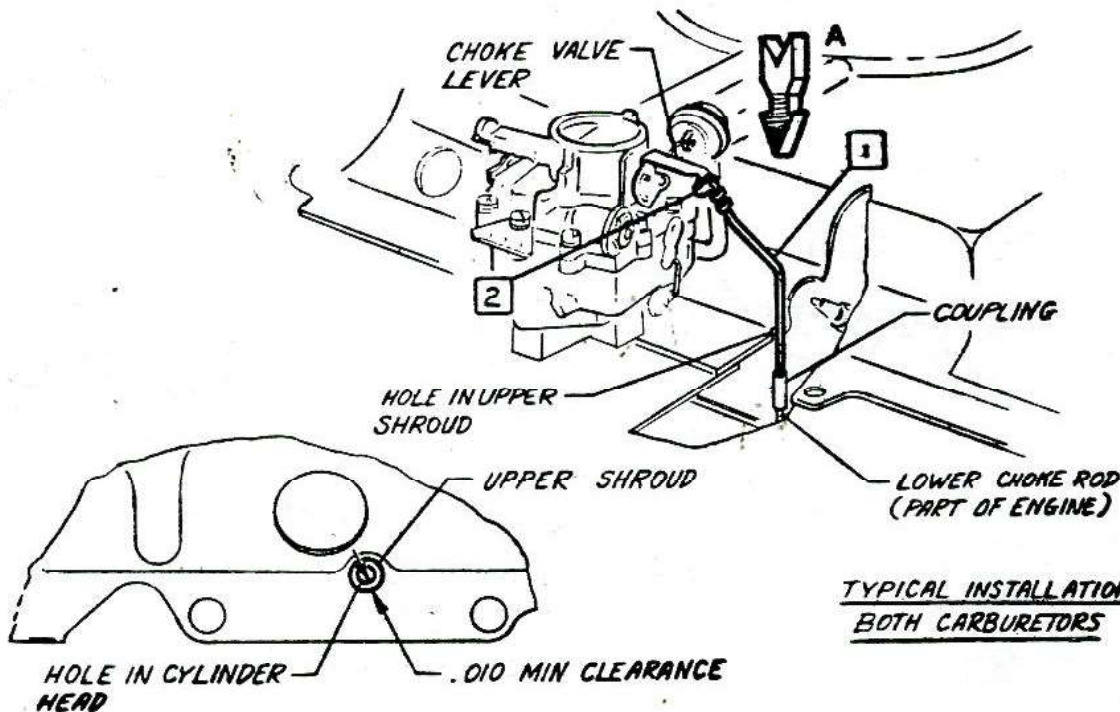
2 6255773

CLIP

AUTOMATIC CHOKE ADJUSTMENT PROCEDURE

1. Before installing carburetor & fuel lines, thread upper choke rod into choke rod coupling for about 26 turns. Lower rod need not be held for this operation.
2. After installing carburetor, hold choke blade in closed position & while holding choke rod asm. upward against the internal stop, adjust upper rod in coupling until the upper end is in alignment with & freely enters the carburetor choke shaft lever hole, then back out upper rod two (2) turns.
3. Install clip **2** when proper adjustment has been determined.

CAUTION To minimize possibility of deforming upper rod, when adjusting length turn vertical portion of rod which is in line with lower rod. Do not "CRANK" rod from top of offset portion.



VIEW A

CHEVROLET MOTOR DIVISION, GMC				UPC	DATE	SYN	REVISION RECORD	AUTH.	DR	CK
AUTOMATIC CHOKE				6						
10000				C 2.						
DWG PREL 3-3	RS	REF: Prel. C 2	L- 75671	L-						
DATE PREL 5-11		L-	L-	L-						
				X SHEET						

1965-70



CHEVROLET

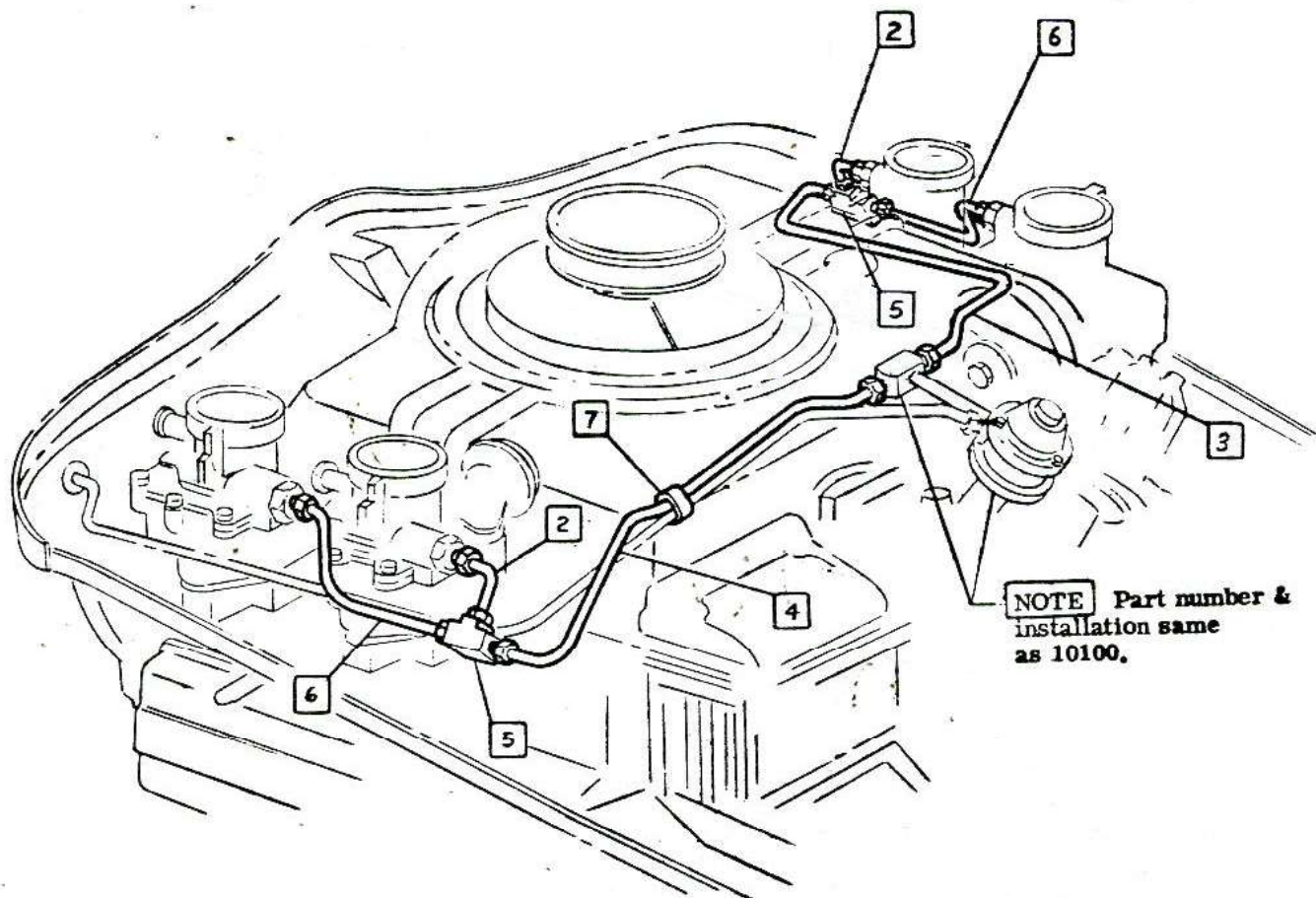
ASSEMBLY INSTRUCTIONS

3862100

CORVAIR 10000 SERIES

- ④ ① 1
① 2 3856780 PIPE ASM
⑤ ① 3 3878594 PIPE ASM R.H.
① 4 3867248 PIPE ASM L.H.
⑤ 127927 TEE

- ⑥ ① 6 3870279 PIPE ASM
⑦ 3785694 CLIP



NOTE Part number &
installation same
as 10100.

▲ 85-105 LBS IN
▲
▲
▲






CHEVROLET MOTOR DIVISION, GMC		UPC	DATE	SYM	REVISION RECORD	AUTH.	DR	CK
FUEL LINES		6	2-11-65	4	3856754 PIPE REMOVED & DRAWING REVISED	69029	CH	
10700		C4.		5	WAS 3856782 PIPE (DRAWING REVISED			
DWG PREL 3-10 DATE REC 5-12		REF: Prel. C B L-75672 L-75671 L- L- L-		6	WAS L.H. ONLY			CI
		☑ SHEET						

1965-71

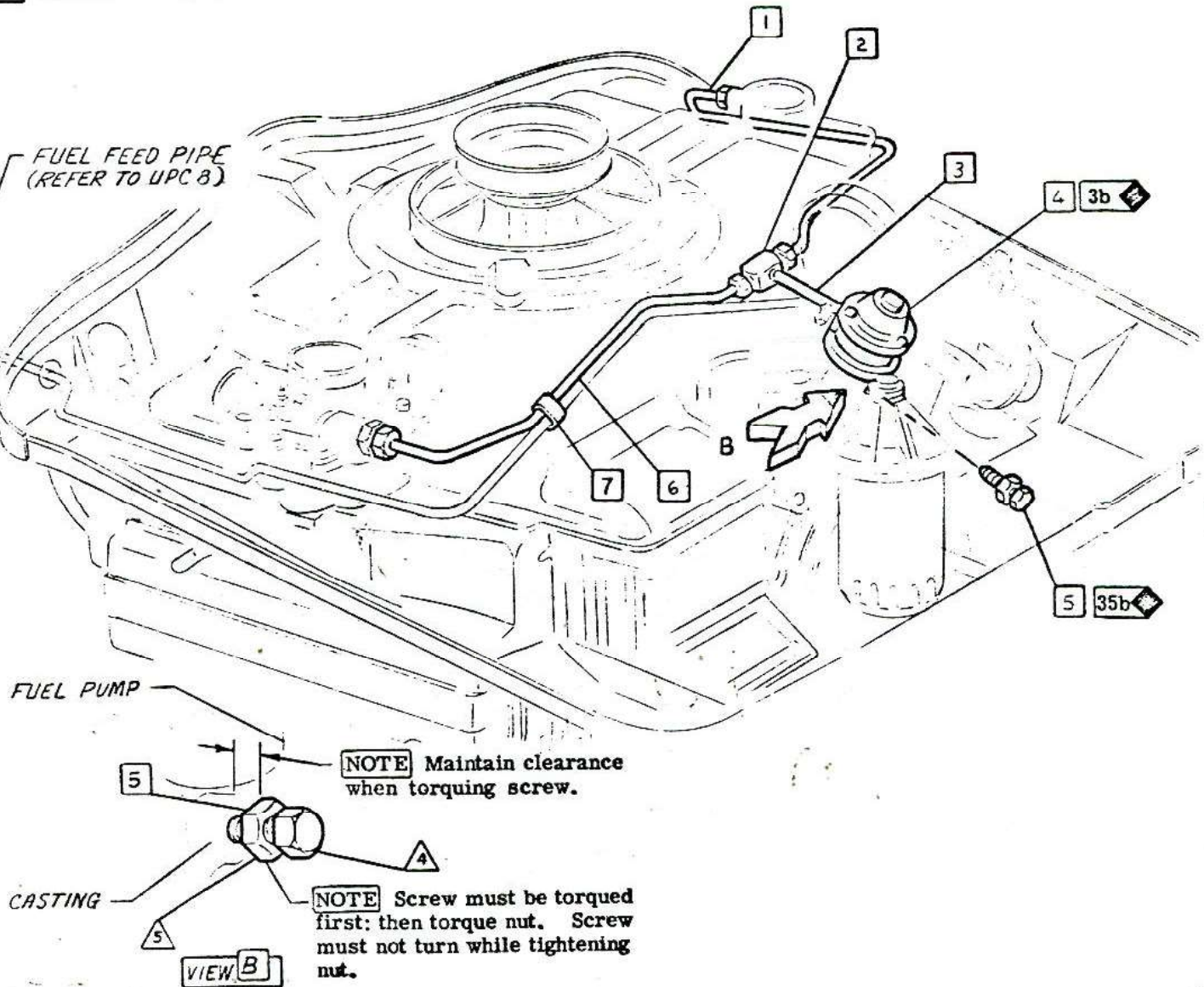
3 8 6 2 1 0 0

CORVAIR 10000 SERIES

- | | | |
|---|---------|---------------------------|
| 1 | 3785616 | PIPE ASM-R.H. - 10100-500 |
| 2 | 178910 | TEE |
| 3 | 192044 | NIPPLE |
| 4 | 5656774 | FUEL PUMP ASM |
| 5 | 6256367 | SCREW ASM |

- 

 3814025



 3785694

- PIPE ASM L.H. -10100-500
CLIP -10100-500



- ▲ 85 - 105 LBS IN ▲ 9 - 15 LBS FT
 ▲ 110 - 130 LBS IN
 ▲ 45 - 60 LBS IN
 ▲ 5 - 10 LBS FT

②

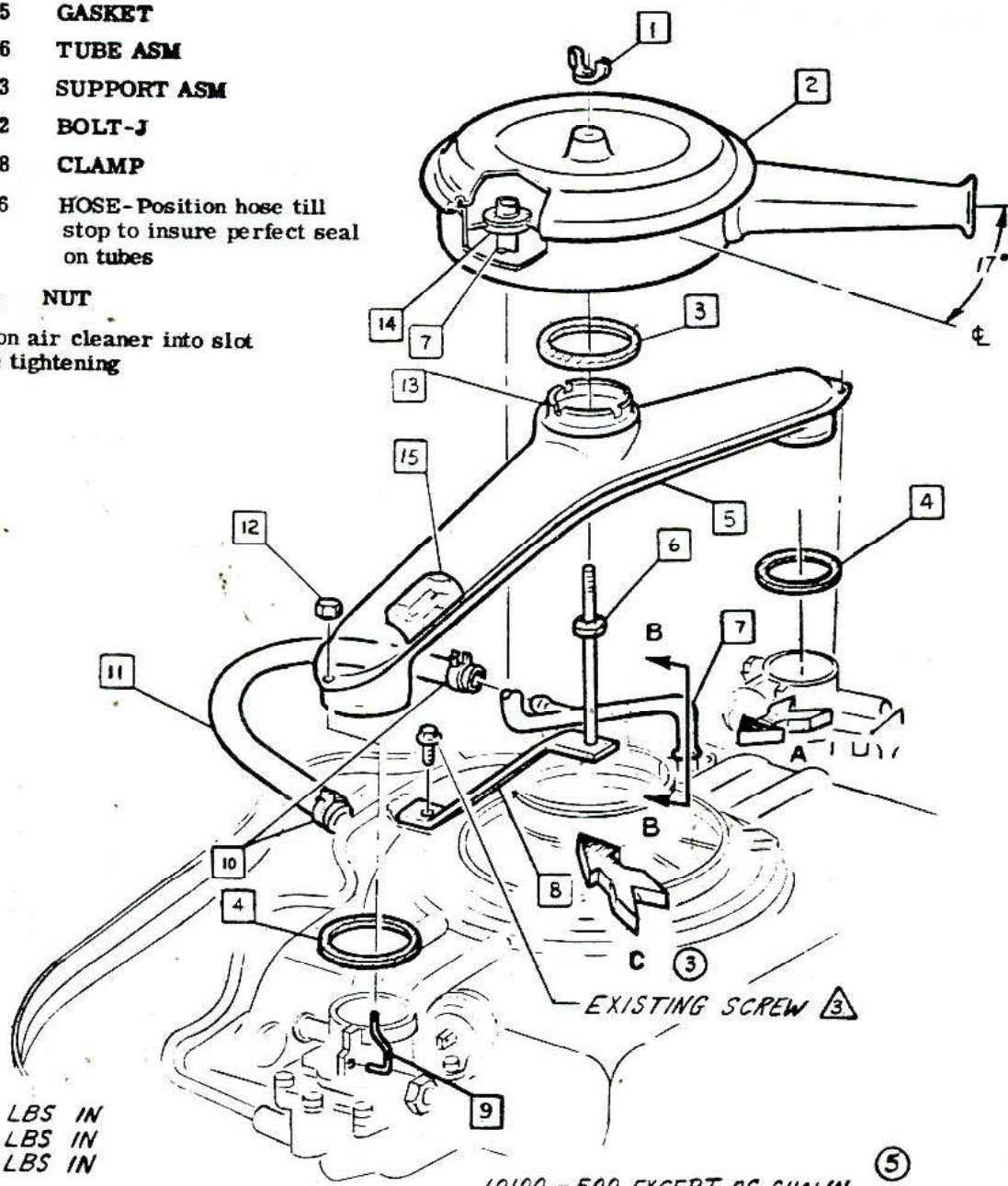
• CHEVROLET MOTOR DIVISION, GMC •				UPC	DATE	SYM	REVISION RECORD	AUTH.	DR	CK
FUEL PUMP & FUEL PIPES				6	7-20-64	1	3851221 & 38675.3 DECAL REMOVED	44271	RS	
						2	VIEW(A) REMOVED			HB
					3-16-69	3	ITEM (7) ADDED	15867	RS	DF
10000				C 5.						
DWG PREL 3-3 RS REF: Prel. C3 L-74795 L- DATE REL 5-8 L- L- L-										
				SHEET	<input checked="" type="checkbox"/>					

1965-72

- ① ① 1 9418699 WING NUT
2 6419705 AIR CLEANER
3 3708408 GASKET
4 3845685 GASKET
5 3856700 TUBE ASM
6 5646135 GASKET
7 3845686 TUBE ASM
8 3845683 SUPPORT ASM
9 3845682 BOLT-J
10 3829058 CLAMP
11 3851856 HOSE-Position hose till stop to insure perfect seal on tubes

- ② 14 3851855 GROMMET
15 3851821 DECAL COMANIA-10100-500 10700

- ② 12 190254 NUT
13 Position air cleaner into slot before tightening



- ④ ① ① 15-20 LBS IN
① 12-15 LBS IN
① 70-95 LBS IN

• CHEVROLET MOTOR DIVISION, GMC •		UPC	DATE	SYM	REVISION RECORD	AUTH	DR	CX
CLOSED ENGINE POSITIVE VENTILATION		6	7-20-64	1	TORQUE (1) WAS 5-8 LBS IN	64798	RS	
				2	ITEM (15) ADDED	64271		
				3	VIEW (C) ARROW ADDED			HR
			8-4-64	4	TORQUE (1) WAS 5-20 LBS IN.	64798	RC	DF
			10-6-64	5	MODEL NOTE ADDED		RS	
				6	WAS 10100-500 MODELS			DF
10000 ⑥		REF C7.						
DWG PREL 3-6 RS		REF: Prel. C5	L-71204	L-71020				
DATE REL 5-21		L-71747	L-	L-				
		④ SHEET						



CHEVROLET

ASSEMBLY INSTRUCTIONS

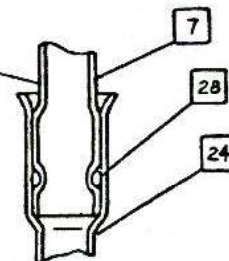
3862100

CORVAIR 10000 SERIES

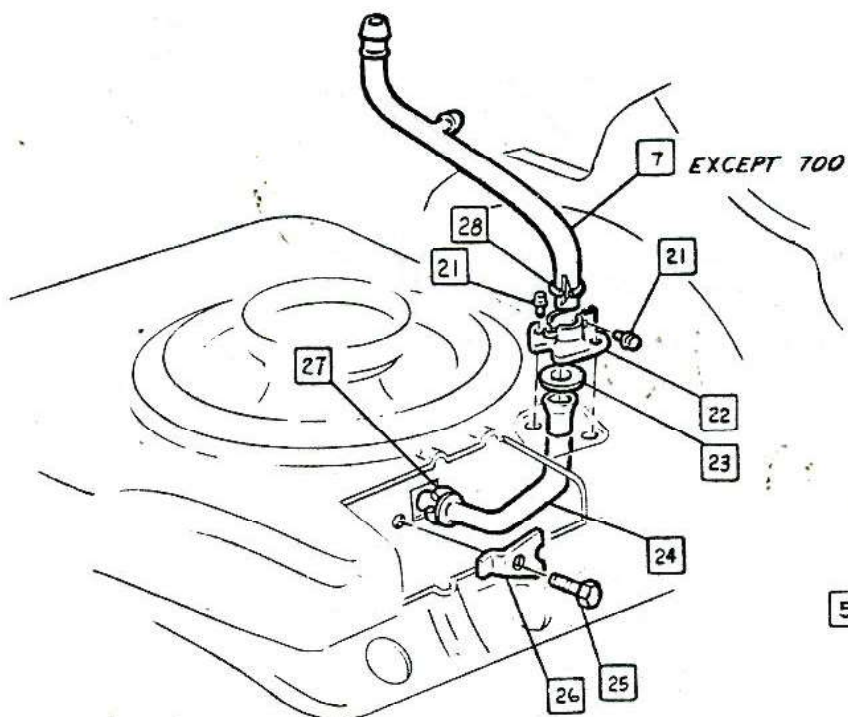
3	21	9417558	SCREW
	22	3830641	CLAMP
	23	3831574	GASKET
	24	3830640	TUBE
4	25	100121	BOLT
	26	6257098	CLAMP

27	3849320	"O" RING
28	3819252	"O" RING

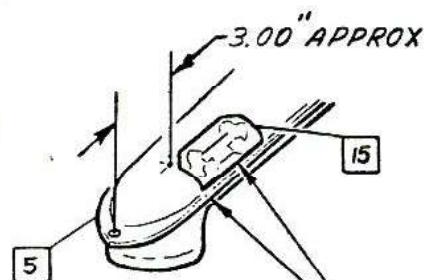
NOTE Tubes to be assembled as shown to provide proper hose alignment.



SECTION B-B



VIEW A



NOTE PARALLEL & ADJACENT

VIEW C

- ▲ 15 - 25 LBS IN
▲ 100 - 132 LBS IN

CHEVROLET MOTOR DIVISION, GMC		UPC	DATE	SYM	REVISION RECORD	AUTH.	DR	CK
CLOSED ENGINE POSITIVE VENTILATION		6	7-20-64	1	VIEW (C) & NOTE ADDED	64271	KS	HB
10000.		REF C 6.						
DWG PREL 3-7		C 7.						
DATE REL 5-11		SHEET						
REF: Prel. C-6 L-64021 L-								
L- L- L-								

1965-74



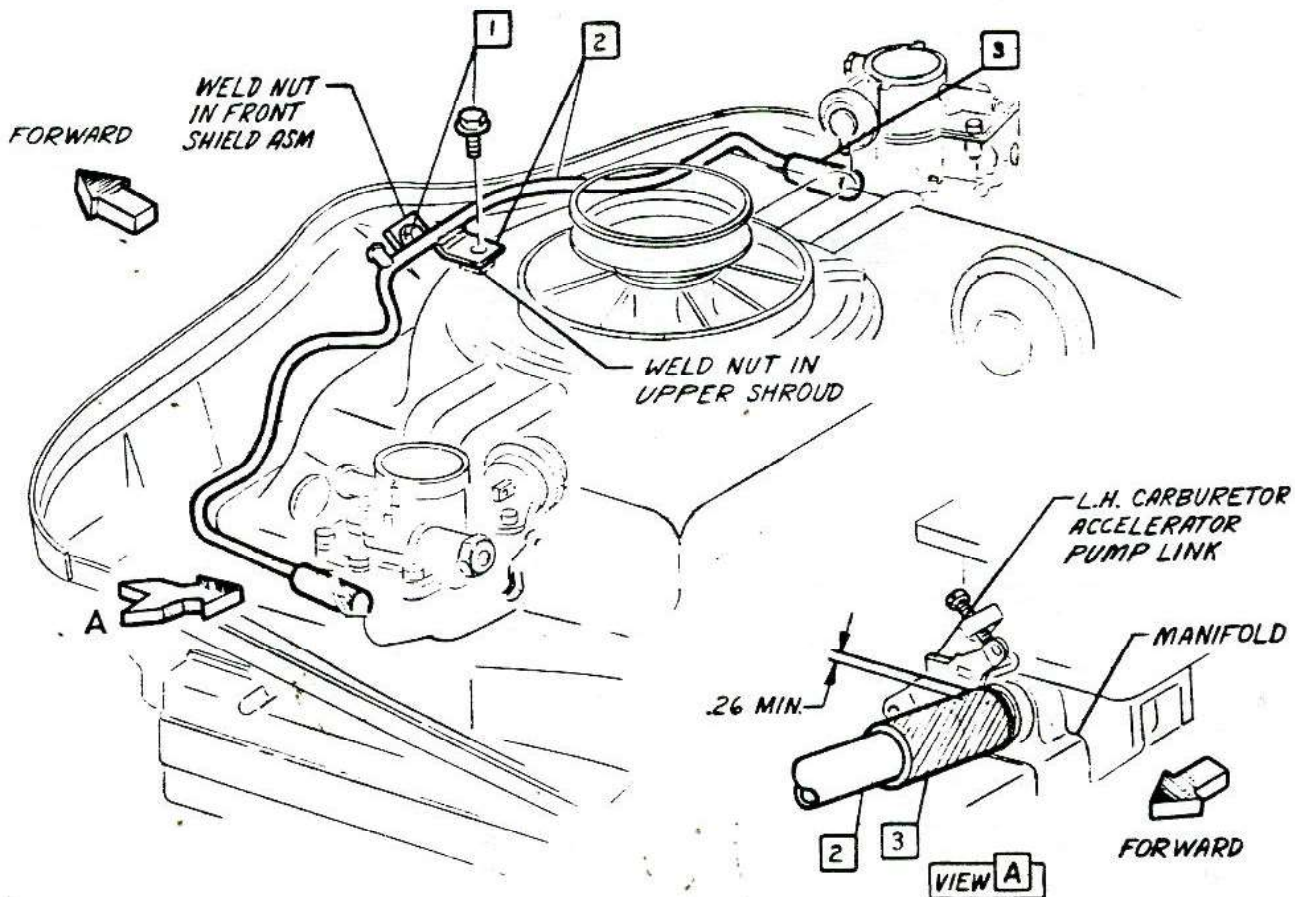
CHEVROLET

ASSEMBLY INSTRUCTIONS

3862100

CORVAIR 10000 SERIES

- ① ① 9417881 SCREW
② ① 3867223 TUBE ASM 10100-500
3870298 -10700
③ 3828954 HOSE

RECOMMENDED ASSEMBLY PROCEDURE

1. Assembly right & left side of tube asm. to engine manifold.
2. Assemble tube assembly to front shield asm. & upper shroud asm.

▲ 70 - 95 LBS IN
▲
▲
▲

CHEVROLET MOTOR DIVISION, GMC				UPC	DATE	SYM	REVISION RECORD	AUTH.	DR	CK
VACUUM BALANCE TUBE				6	7-10-64	1	3856739 WAS 3856719	64796	RS	HR
					10-5-64	2	3870298 WAS 3856739	66829	RS	DF
10000				C 8.						
DWG PREL 3-5 REF: Prel. C 4 L-73370 L-										
DATE REL 5-11										
				<input checked="" type="checkbox"/> SHEET						

1965-75



CHEVROLET

ASSEMBLY INSTRUCTIONS

3862100

CORVAIR 10000 SERIES

- ④ ①
⑤ ② 3886604 NUT & FERRULE ASM.
⑥ ③

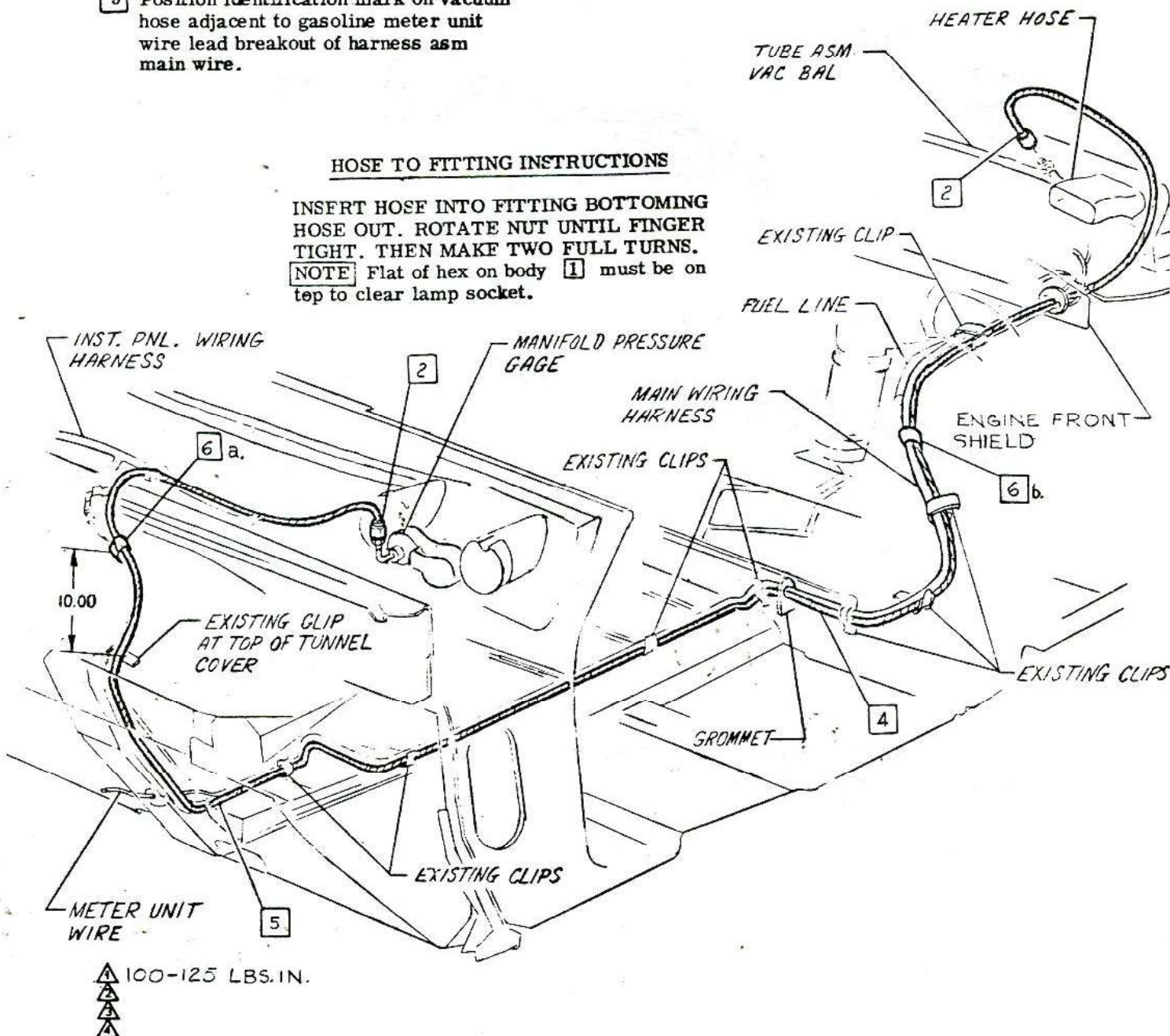
- ⑦ ⑥ 3724851 TAPE a. 3 IN.
b. 6 IN.

- ④ 3324378 HOSE

- ⑤ Position identification mark on vacuum hose adjacent to gasoline meter unit wire lead breakout of harness asm main wire.

HOSE TO FITTING INSTRUCTIONS

INSERT HOSE INTO FITTING BOTTOMING HOSE OUT. ROTATE NUT UNTIL FINGER TIGHT. THEN MAKE TWO FULL TURNS.
NOTE Flat of hex on body ① must be on top to clear lamp socket.



CHEVROLET MOTOR DIVISION, GMC				UPC	DATE	SYM	REVISION RECORD	AUTH	DR	CK
VACUUM GAGE HOSE				6	4-23-65	+	3866225 FERRULE REMOVED	15977	SM	
10700				C9.			5 WAS 3866222 NUT			
DWG P&EL 3-16 RS REF: Prel. C11 L-72621 L-0990				SHEET IX			6 3819070 CLIP REMOVED			CI
DATE P&EL 5-18 L-72625 L-							7 ITEM 66 ADDED			



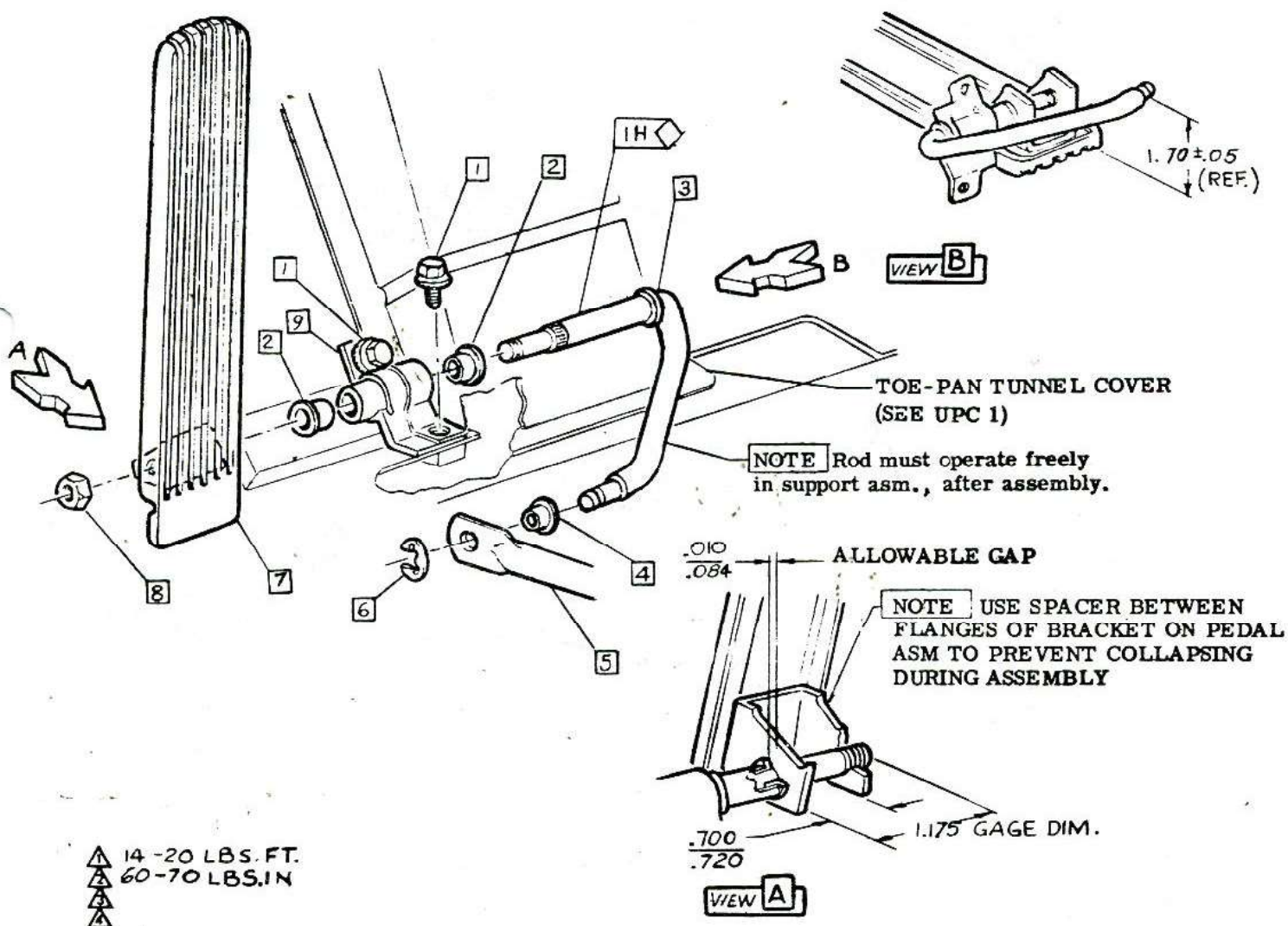
CHEVROLET

ASSEMBLY INSTRUCTIONS

3862100

CORVAIR 10000 SERIES

1	3846201	SCREW	11	7	3878071	PEDAL ASM.
2	3710620	BUSHING	9	8	9422276	NUT
3	3861873	ROD-ACCELERATOR PEDAL		9	3861874	SUPPORT ASM.
4	6255952	BUSHING				
5	3868644	ROD-ACCELERATOR CONTROL				
10	6	214612				
		RING - RETAINER				



▲ 14-20 LBS. FT.
▲ 60-70 LBS. IN
▲

CHEVROLET MOTOR DIVISION, GMC				UPC	DATE	SYM	REVISION RECORD	AUTH.	DR	CK
ACCELERATOR PEDAL & LINKAGE				6	11-11-64	9	WAS 9414072 NUT	67286	RC	DE
10000				D1.	12-14-64	10	WAS 276412 RING	—	BR	CI
DWG PREL 1-31 RC REF: Preb. D1 L-71490 L-				SHEET X	12-30-64	11	WAS 3783566 PEDAL & DRAWING REVISED	15957	BR	CI
DATE REL 1-31 L- L- L-										

1965-77



CHEVROLET

ASSEMBLY INSTRUCTIONS

3862100

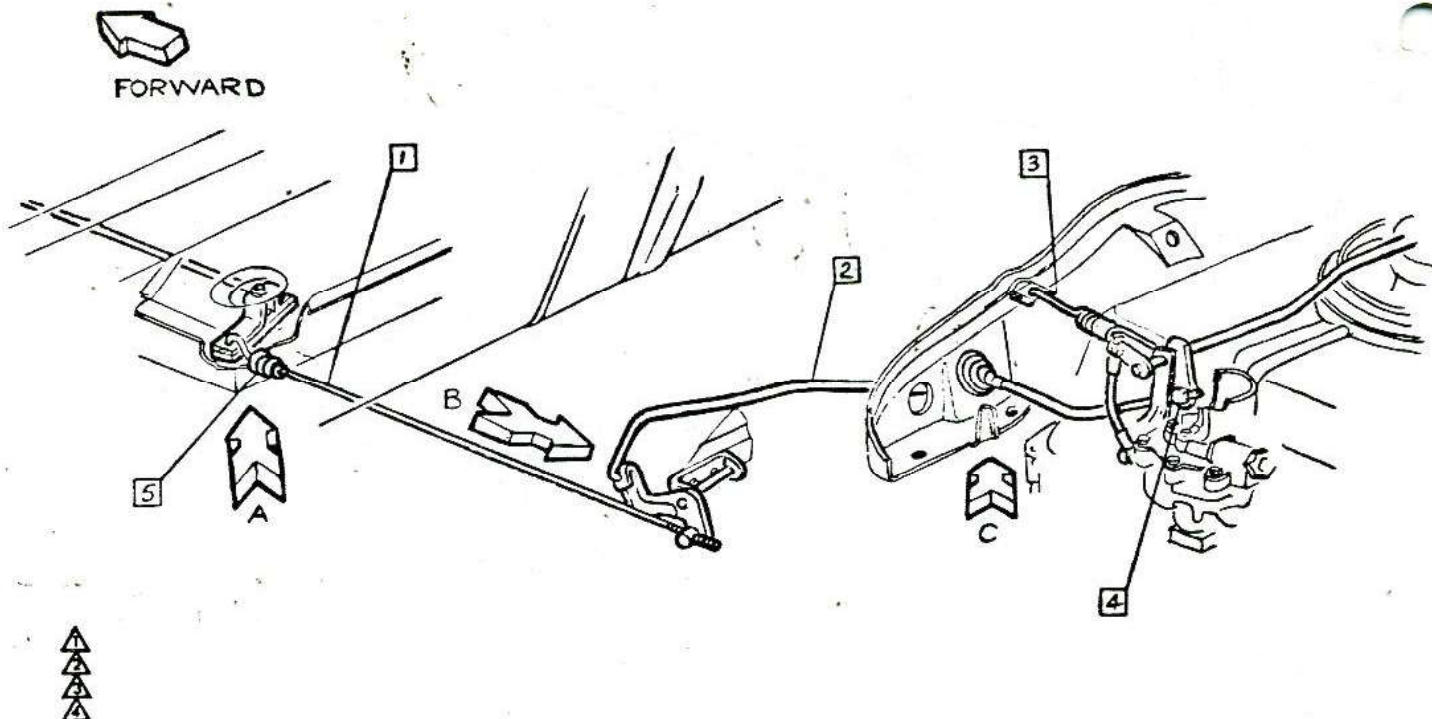
CORVAIR 10000 SERIES

- 1 3861879 ROD
2 3875095 ROD ⑦
3 3873990 SPRING-PULLBACK

- 4 3785360 SWIVEL
① 5 6256998 BOOT

ACCELERATOR CONTROL LINKAGE ADJUSTMENT ③

ROTATE REAR IDLER LEVER ③ AT TRANSMISSION CLOCKWISE UNTIL LEVER HITS STOP ON BRACKET ②⑨ & HOLD IN THAT POSITION. ACTUATE CARB. CROSS SHAFT THROTTLE VALVE LEVER UNTIL L.H. CARB. IS IN WIDE OPEN THROTTLE POSITION. ALIGN SWIVEL ④ AT UPPER END OF CARB. CROSS SHAFT ROD ② UNTIL IT ENGAGES HOLE IN CROSS SHAFT LEVER FREELY. REMOVE SWIVEL FROM HOLE & RELEASE IDLER LEVER & CROSS SHAFT LEVER TO IDLER POSITION & BACK OFF SWIVEL ④ FIVE FULL TURNS. RE-ENGAGE SWIVEL ② IN CROSS SHAFT LEVER HOLE & ATTACH SPRING ③ RECHECK ADJUSTMENT BY OPENING REAR IDLER LEVER ③ TO WIDE OPEN THROTTLE POSITION & CHECK THAT CARB. VALVE IS AT WIDE OPEN THROTTLE POSITION. (WIDE OPEN THROTTLE POSITION MAY BE ESTABLISHED BY EITHER L.H. OR R.H. CARBURETOR IF CROSS SHAFT LINKAGE ADJUSTMENT HAS BEEN MADE. SEE SHT. D4.00) WITH THE REAR IDLER ROD SWIVEL REMOVED FROM THE HOLE IN REAR IDLER LEVER ③ HOLD THE REAR IDLER LEVER IN WIDE OPEN THROTTLE POSITION. DEPRESS ACCELERATOR PEDAL TO WITHIN 2.00 ⑤ ④ INCHES OF THE TOE PAN ON JOBS WHICH COMBINE L63 & M35, SET TO WITHIN 1.50 INCHES OF THE TOE PAN ON ALL OTHER JOBS. (CARPET REMOVED). MEASURE FROM UNDERSIDE OF RUBBER FLANGE AT TOP END OF PEDAL. A SLIGHT PRESSURE IS REQUIRED ON ROD ① UNTIL ACCELERATOR PEDAL BOTTOMS ON SPACER. ADJUST SWIVEL ③ UNTIL IT FREELY ENGAGES HOLE IN BOTTOM OF REAR IDLER LEVER ③ & ASSEMBLE WITH RETAINING RING ③⑥.

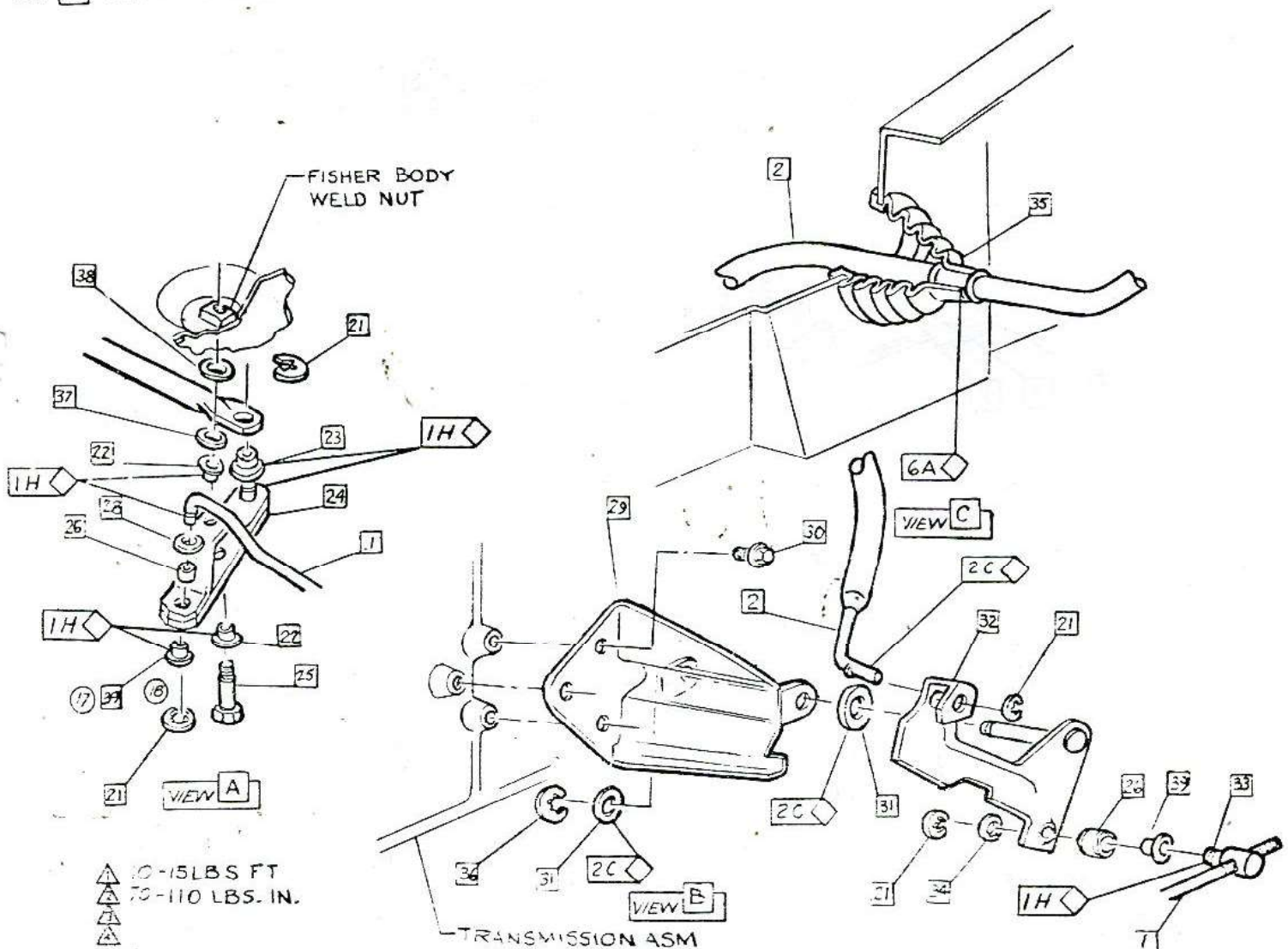


CHEVROLET MOTOR DIVISION, GMC				UPC	DATE	SYM	REVISION RECORD	AUTH.	DR	CK
ACCELERATOR CONTROLS LINKAGE & ADJUSTMENT				6	6-25-64	1	ITEM 5 ADDED	64778	RC	DF
10000				REF D 3.	7-10-64	2	WAS 3864834 ROD	—	RC	DP
D2.				⑦	9-29-64	3	EXC 10760 RMVD FROM NOTE TITLE	64467	RC	—
DWG PREL 2-14 R.C. REF: Prel. D2. L-71490 L-				⑦	—	4	1.50 WAS 1 1/4	—	—	DF
DATE REL 2-14 L- L- L-				⑦	12-30-64	5	ADJUSTMENT NOTE REVISED	67772	BR	CI
⑦ SHEET				⑦	1-22-65	6	WAS 3851924 SPRING &	67102	BR	—
				⑦	—	7	DWG REVISED	—	—	—
				⑦	—	—	WAS 3861883 ROD	—	—	CI

1965-78

- [21] 274612 RING-RETAINING
- [22] 3861877 SLEEVE
- [23] 6255952 BUSHING
- [24] 3861876 LEVER
- [25] 3876942 BOLT
- [26] 3861880 BUSHING
- [27] 3707713 SLEEVE
- [28] 3718496 P. WASHER
- [29] 3787007 BRACKET
- [30] 423345 SCREW

- [31] 3787002 SPL. WASHER
- [32] 3861881 LEVER
- [33] 6257704 SWIVEL
- [34] 3718496 SPL. WASHER
- [35] 3784992 BOOT
- [36] 9413523 RING RETAINING
- [37] 3866515 SPL. WASHER
- [38] 3728666 SPL. WASHER
- [39] 3866271 SLEEVE



▲ 10-15 LBS. FT.
▲ 70-110 LBS. IN.
▲

CHEVROLET MOTOR DIVISION, GMC				UPC	DATE	SYM	REVISION RECORD	AUTH.	DR.	CK.
ACCELERATOR CONTROLS LINKAGE & ADJUSTMENT				6	12-17-77	17	WAS 17-17-77 18 ITEM (25) REMOVED	3862100		CI
10000				REF D 2.						
DWG PREL 2-77 RC REF: Prel. D3 L-71490 L-				D3.						
DATE REL 2-77 L- L- L-				SHEET 1						



CHEVROLET

ASSEMBLY INSTRUCTIONS

3862100

CORVAIR 10000 SERIES

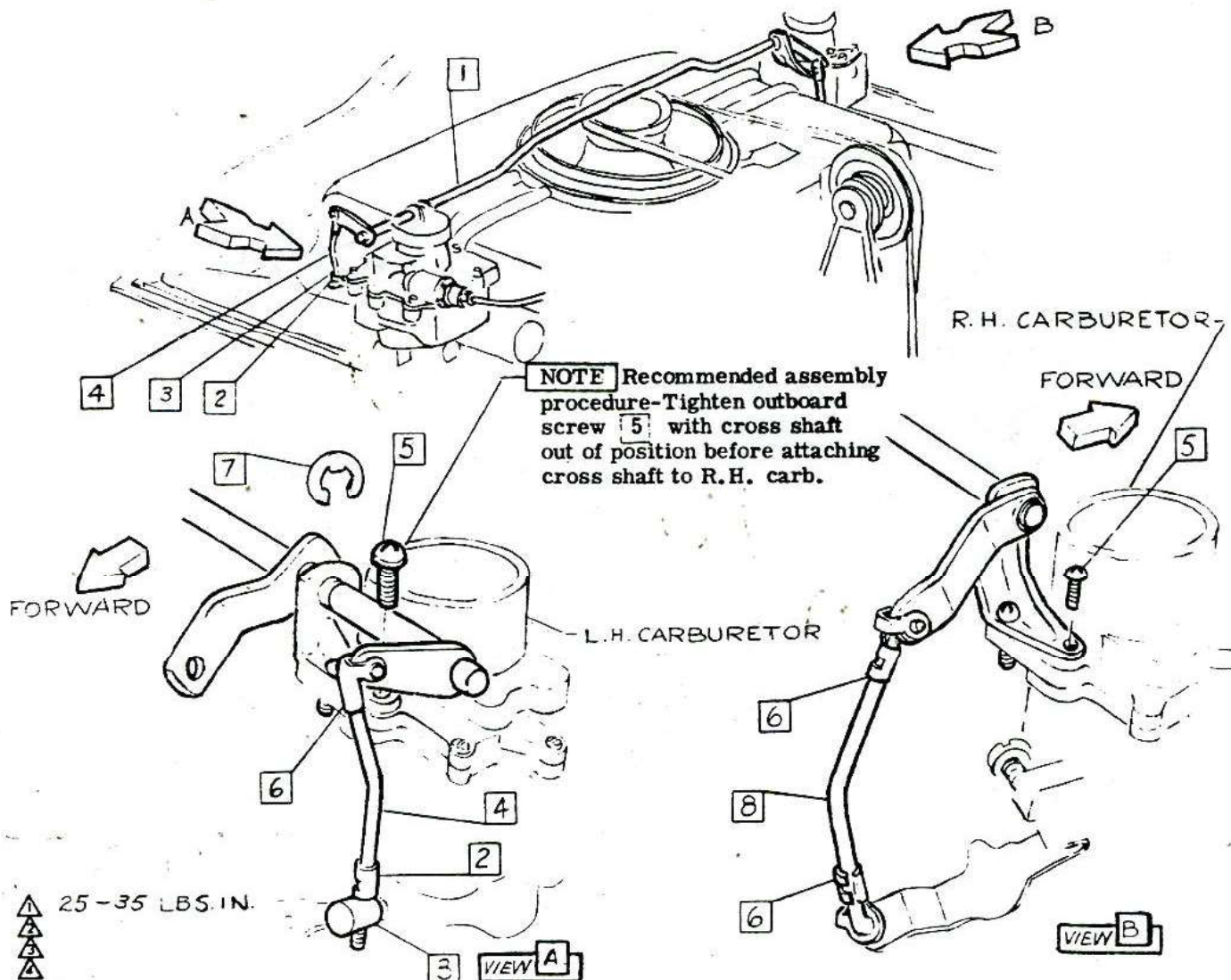
- 1 3850535 CROSS SHAFT ASM.
- 2 554285 CLIP
- 3 6255916 SWIVEL
- 4 3814081 ROD
- 5 273335 SCREW ASM.
- 6 2294788 CLIP

- 7 148149 RETAINER
- 8 3814082 ROD

CARBURETOR ADJUSTMENT

After mounting cross shaft asm. 1 & R. H. carburetor rod 8 grasp cross shaft accel. control lever lower end & push forward to insure R.H. carburetor throttle lever is against idle screw. Holding L. H. carburetor throttle lever against idle screw, adjust L. H. rod 4 by turning it into swivel 3 until it freely enters hole in lever on cross shaft asm.

1. Adjust rod 4, if required, so that L. & R. H. carb. throttle levers break away from the idle screw simultaneously. Then attach with clip 7. Manually operate linkage to check for freedom.

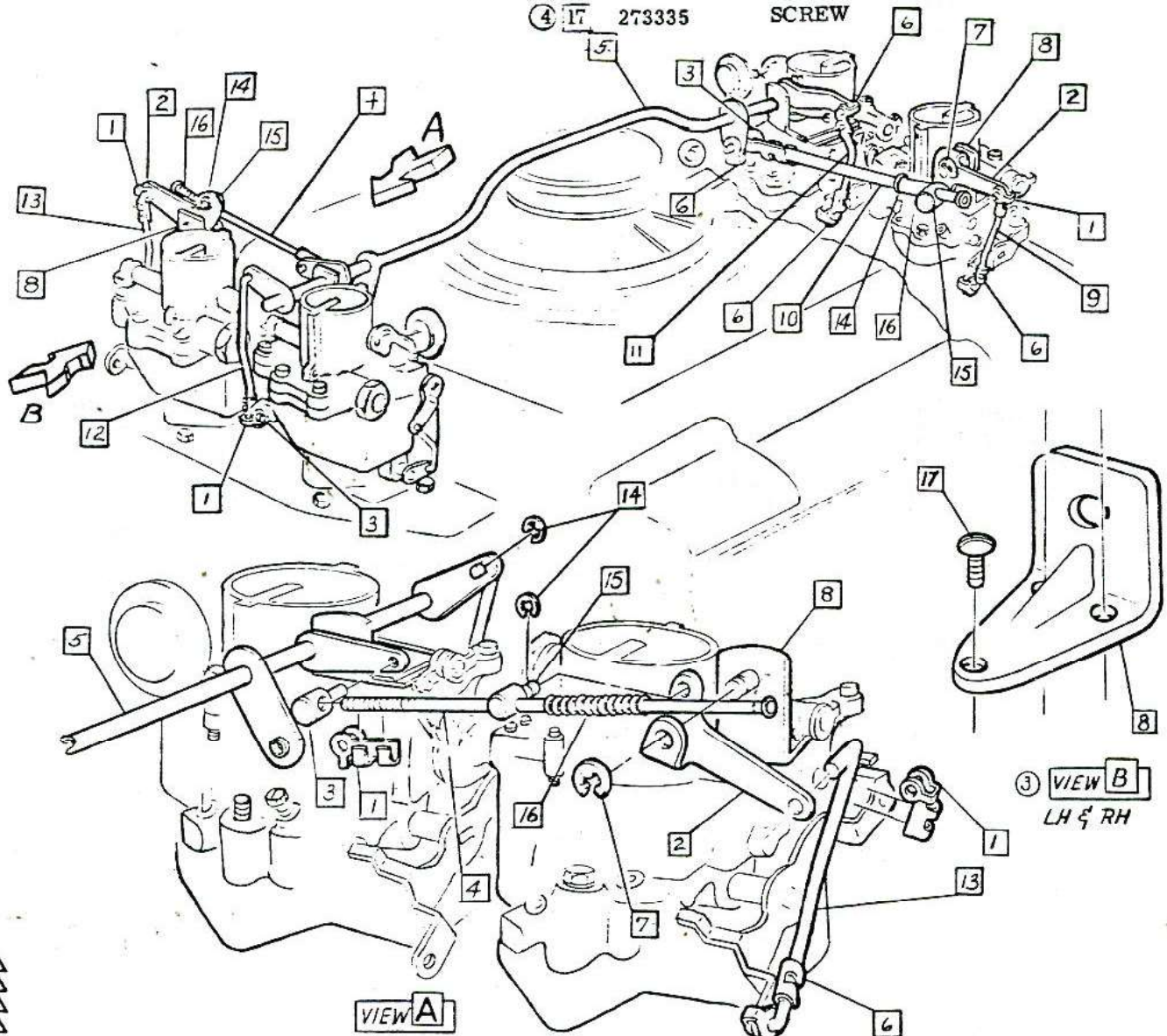


• CHEVROLET MOTOR DIVISION, GMC •				UPC	DATE	SYM	REVISION RECORD	AUTH.	DR	CK
CARBURETOR CROSS SHAFT LINKAGE & ADJUSTMENT				6	6-25-64	1	WAS 148194 RETAINER	6474	RC	LF
					6-12-64	2	WAS 148194 RETAINER	—	RC	LF
10100-500				D 4.						
DWG PREL 2-25 R.C. REF: Prel. D 4 L-12693 L-										
DATE REL 2-25 L- L- L-				X SHEET						

1965-80

- | | | |
|---|---------|--------------|
| 1 | 554285 | CLIP |
| 2 | 3867209 | LEVER |
| 3 | 6255916 | SWIVEL |
| 4 | 3873991 | ROD |
| 5 | 3873988 | SHAFT ASM. |
| 6 | 2294788 | CLIP |
| 7 | 274574 | RING |
| 8 | 3867210 | SUPPORT ASM. |

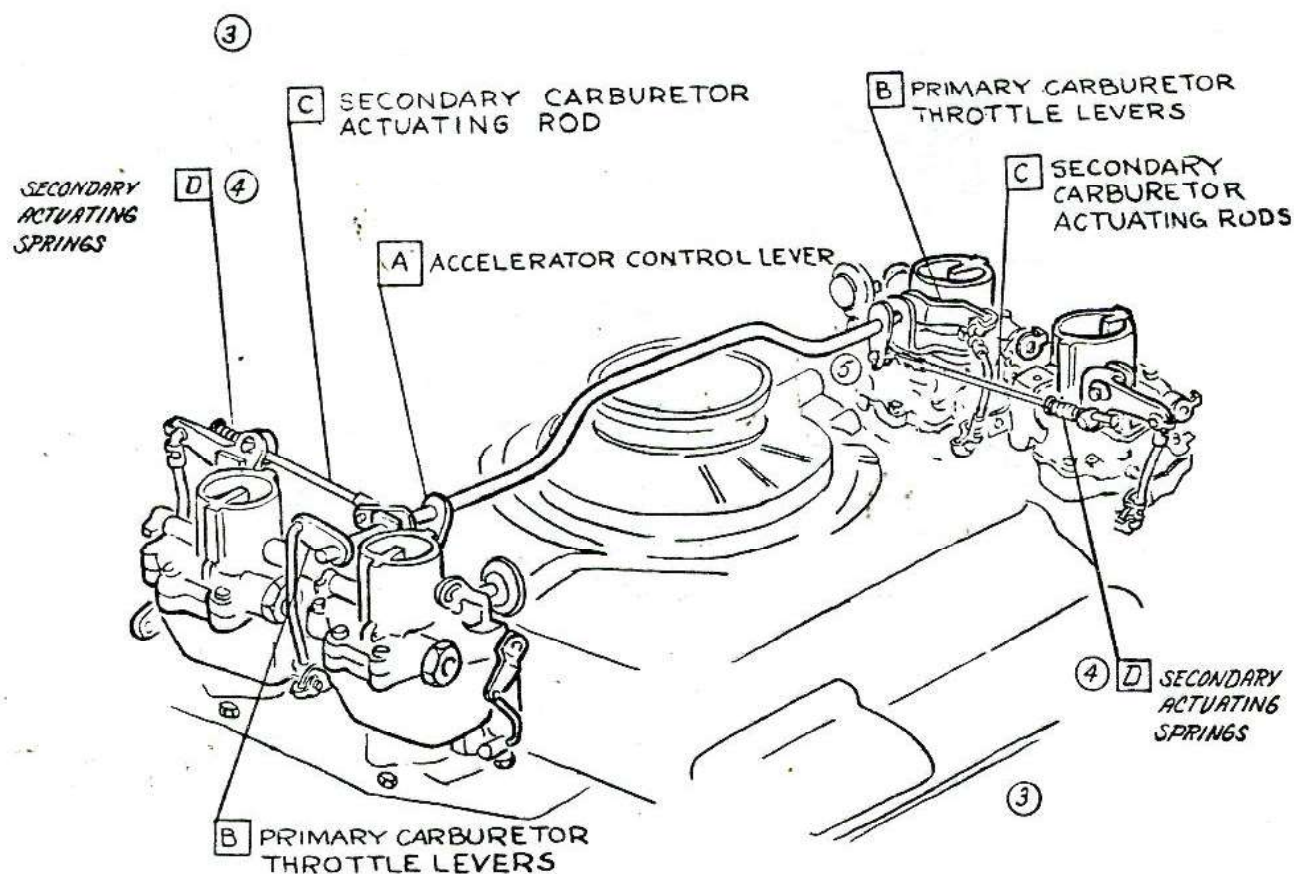
- | | | |
|----|---------|-----------|
| 9 | 3867212 | ROD R. H. |
| 10 | 3873992 | ROD R. H. |
| 11 | 3867206 | ROD |
| 12 | 3867205 | ROD L. H. |
| 13 | 3867211 | ROD L. H. |
| 14 | 274611 | RING |
| 15 | 3873993 | SWIVEL |
| 16 | 3873994 | SPRING |
| 17 | 273335 | SCREW |



• CHEVROLET MOTOR DIVISION, GMC •		UPC	DATE	SYM	REVISION RECORD	AUTH.	DR	CK
CARBURETOR LINKAGE		6	3-2-65	2	REDRAWN & REDESIGNED	67102	BP	CI
10700		D5.	3-4-65	3	VIEW B ADDED	15982	KM	CI
DWG PREL 3-5		5B	3-5-65	4	ITEM 17 ADDED			CI
DATE REL 5-5				5	CLIP & SWIVEL DWG. REVISED		KM	CI
REF: Prel. D 5 L-75715 L-75471		SHEET						
L-75634 L-								

② ① SECONDARY CARBURETOR ADJUSTMENT

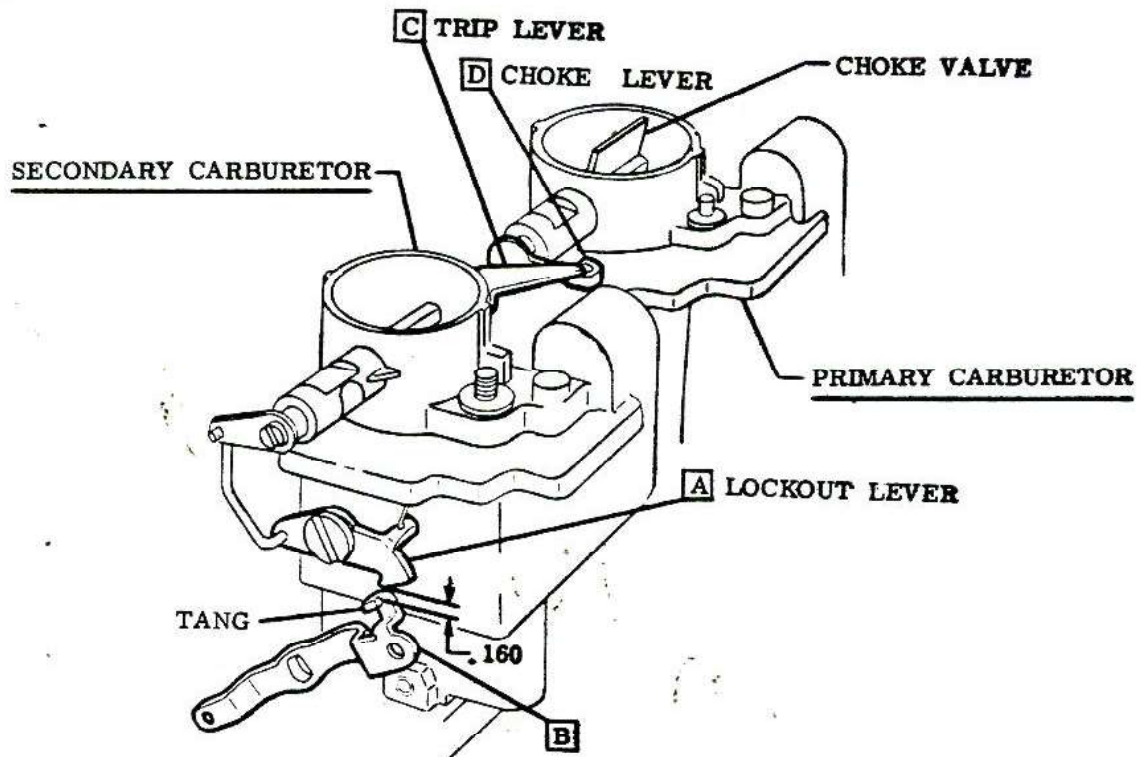
WHEN PRIMARY CARBURETOR ADJUSTMENT IS COMPLETE, INSERT .060 SPACER BETWEEN ANY TWO COILS OF THE SECONDARY ACTUATING SPRING D WHILE HOLDING CROSS SHAFT CONTROL LEVER A AT LOWER END UNTIL PRIMARY CARBURETOR THROTTLE LEVERS B ARE AT WIDE OPEN THROTTLE STOPS, AND PRIMARY CHOKE BLADES ARE IN OFF POSITION. ADJUST EACH SECONDARY ACTUATING ROD C TO FULLY COMPRESS SECONDARY ACTUATING SPRINGS D TO SOLID HEIGHT. REMOVE SPACERS FROM SPRINGS.



• CHEVROLET MOTOR DIVISION, GMC •				UPC	DATE	SYM	REVISION RECORD	AUTH.	DR	CK
CARBURETOR LINKAGE ADJUSTMENT				6	1-22-65	1	CARB. ADJUSTMENT REVISED	67102	JC	CI
10700					3-31-65	2	CARB. ADJUSTMENT REVISED	—	KM	
DWG PREL 5-18				D6.		3	NOTE (C) RMVD. (2) PLACES			
DATE REL 5-18						4	WAS SWIVEL (2) PLACES			
REF: Prel. D 6. L-75671 L-						5	SWIVEL & CLIP DWG. REVISED			CI
L-76634 L-										
✓ SHEET										

CARBURETOR ADJUSTMENT

WITH THE PRIMARY CHOKE VALVE IN THE FULL OPEN (VERTICAL) POSITION, AND WITH A .160 GAGE (ROUND OR FLAT) PLACED BETWEEN THE LOCKOUT LEVER [A] AND THE TANG [B] OF THE SECONDARY CARBURETOR THROTTLE LEVER, ADJUST SECONDARY CARBURETOR TRIP LEVER [C] TO JUST CONTACT PRIMARY CARBURETOR CHOKE LEVER [D].



• CHEVROLET MOTOR DIVISION, GMC •				UPC	DATE	SYM	REVISION RECORD		AUTH	DR	CK
TITLE CARBURETOR ADJUSTMENT				6							
MOD 10700				D7.							
DWG DATE REL 5-12	R.C. C.I.	REF. ECR7003B L-76634 L-		SHEET 1							

This document was created with Win2PDF available at <http://www.win2pdf.com>.
The unregistered version of Win2PDF is for evaluation or non-commercial use only.
This page will not be added after purchasing Win2PDF.